



INSTALLATION INSTRUCTIONS

21-845C (Gun Metal Gray Finish)

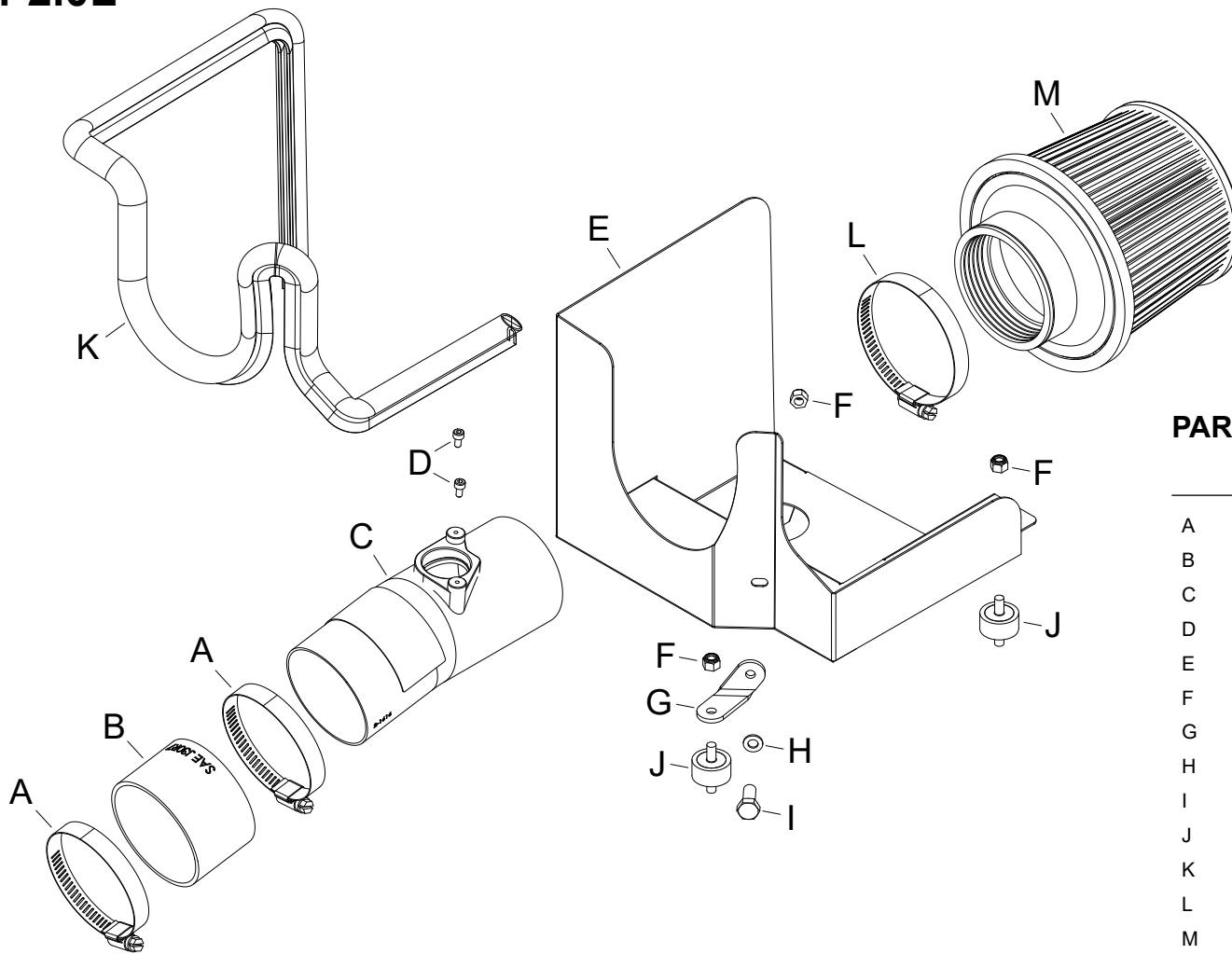
HONDA

2018 Accord

L4-2.0L

TOOLS NEEDED:

Phillips screw driver
Flat blade screw driver
3mm allen, ratchet
Extension
10mm socket
10mm wrench



PARTS LIST:

Description	Qty.	Part #
A HOSE CLAMP #44 STAINLESS	2	08560
B HOSE; 3"ID X 2"L REINFORCED	1	08711
C INTAKE TUBE	1	2-1616C
D BOLT; M4 - 0.07 8MM, A/H CAP	2	07733
E HEAT SHIELD	1	20-8625
F NUT; M6, SERRATED	3	KIT20WFCZ060
G BRACKET; "L", 21-845C,STL	1	064355
H WASHER; 6MM FLAT, SS	1	08269
I BOLT; 6MM-1.00 X 16MM, SS	1	07812
J STUD; M6-1.00 M/M, RUBBER	2	07027
K EDGE TRIM (35")	1	102471
L 1/2" BNDHOSE CLAMP	1	9452
M FILTER	1	21-203DK

Read and understand these instructions **BEFORE** attempting to install this product. Failure to follow installation instructions and not using the provided hardware may damage the intake tube, throttle body and engine.

TO START:

1. Turn off the ignition and disconnect the negative battery cable.

NOTE: Disconnecting the negative battery cable erases pre-programmed electronic memories. Write down all memory settings before disconnecting the negative battery cable. Some radios will require an anti-theft code to be entered after the battery is reconnected. The anti-theft code is typically supplied with your owner's manual. In the event your vehicles anti-theft code cannot be recovered, contact an authorized dealership to obtain your vehicles anti-theft code.



2. Disconnect the mass air sensor electrical connection.



3. Loosen the hose that secures the intake hose to the turbo inlet pipe.



4. Remove the push pins that secure the fresh air duct and then remove the fresh air duct from the vehicle.



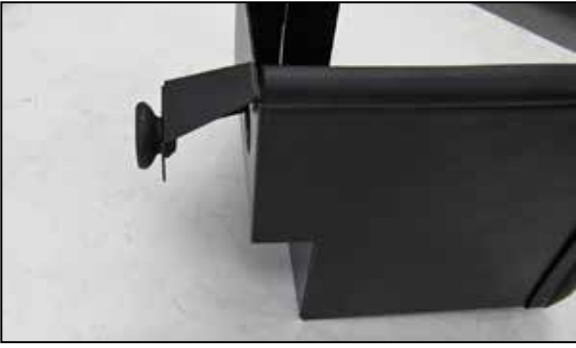
5. Remove the two bolts that secure the air filter housing to the core support and then remove the air filter housing from the vehicle.

NOTE: AEM recommends that customers do not discard factory air intake.



6. Install the provided edge trim onto the heat shield as shown.

NOTE: Some trimming of the edge trim will be necessary.



7. Remove the mounting grommet from the factory air filter housing and install it into the AEM® heat shield as shown.



8. Install the provided bracket (064355) onto the heat shield using the provided hardware.



9. Install the two-provided rubber mounted studs onto the filter housing mounting locations.



10. Install the heat shield assembly onto the mounting studs and secure with the provided hardware.



11. Install the provided coupling hose (08711) onto the turbo inlet pipe and secure with the provided hardware.



12. Remove the mass air sensor from the factory air filter housing and then install it into the AEM® intake tube and secure with the provided hardware.



13. Install the AEM® air filter onto the intake tube and secure with the provided hose clamp.



14. Install the intake tube assembly into the coupler hose at the turbo inlet pipe, adjust the assembly for best fit and then secure with the provided hose clamp.



15. Reconnect the mass air sensor electrical connection.



16. Reinstall the fresh air intake duct and secure with the factory push pins.



Reassemble Vehicle

Position the inlet pipes for the best fitment. Be sure that the pipes or any other components do not contact any part of the vehicle. Tighten the rubber mount, all bolts, and hose clamps. Check for proper hood clearance. Re-adjust pipes if necessary and re-tighten them. Inspect the engine bay for any loose tools and check that all fasteners that were moved or removed are properly tightened. Reconnect negative battery terminal and start engine. Let the vehicle idle for 3 minutes. Perform a final inspection before driving the vehicle.

Service and Maintenance

AEM Induction Systems requires cleaning the intake system's air filter element every 100,000 miles. When used in dusty or off-road environments, our filters will require cleaning more often. We recommend that you visually inspect your filter once every 25,000 miles to determine if the screen is still visible. When the screen is no longer visible some place on the filter element, it is time to clean it. To clean, purchase our Synthetic air filter cleaner, part number 99-0624 and follow the easy instructions. Use window cleaner to clean your powder coated AEM® intake tube.

NOTE: DO NOT USE aluminum polish on powder coated AEM® intake tubes.