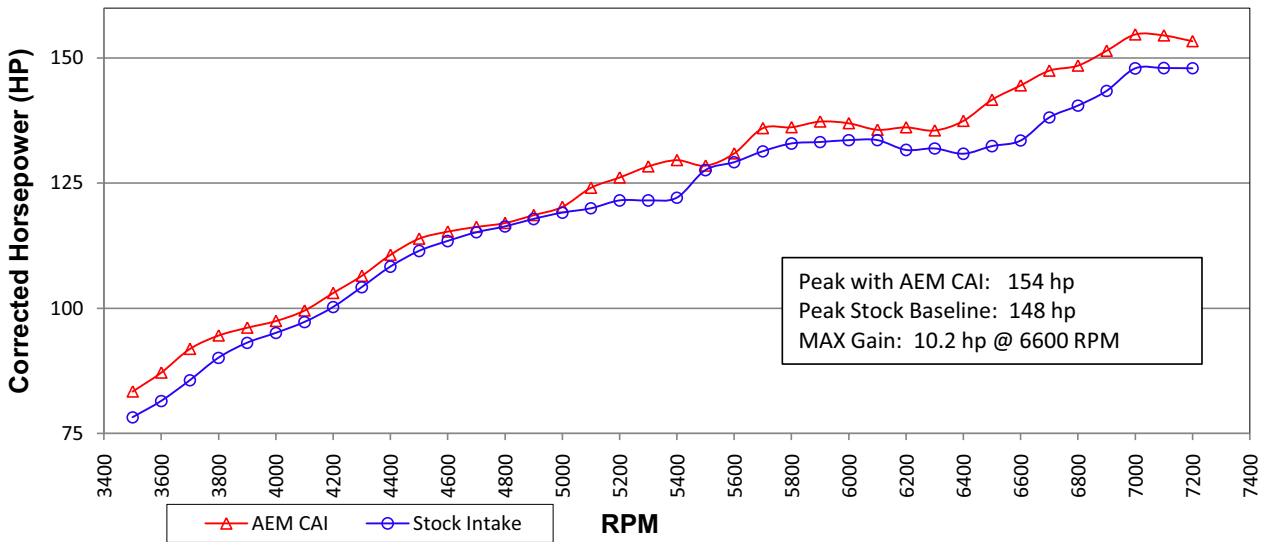
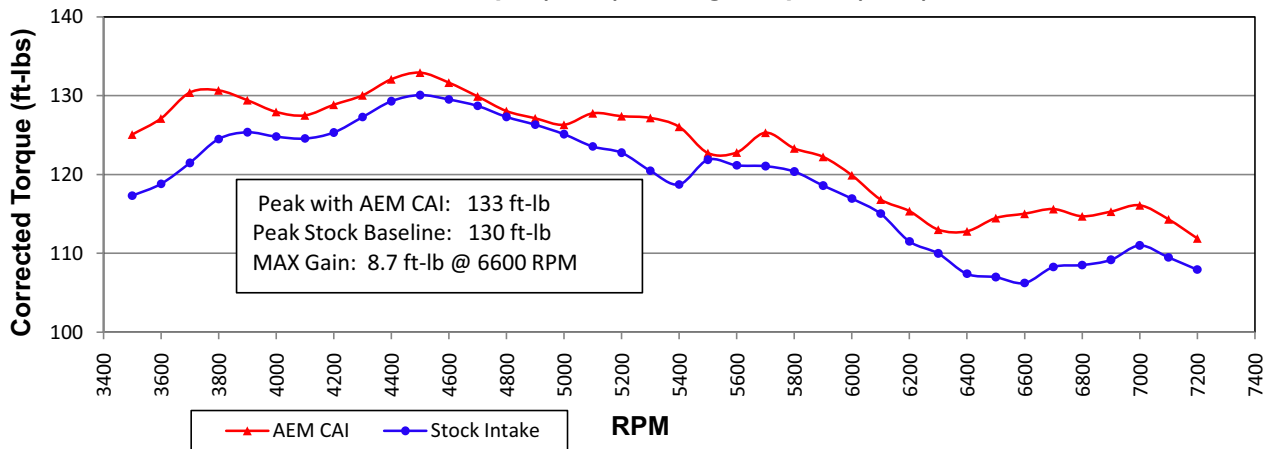




**2010 Acura TSX 2.4L  
AEM 21-697 Cold Air Intake  
Corrected Horsepower (HP) vs. Engine Speed (RPM)**



**Corrected Torque (ft-lbs) vs. Engine Speed (RPM)**



Run Title: Stock 2010 Acura TSX 2.4L 02/12/2010  
 Run Notes: Averaged baseline 3<sup>rd</sup> gear runs  
 Stock: 75.98 °F, 30.33 in-Hg, SAE: 0.96, Relative Humidity: 15 %

Run Title: AEM 2010 Acura TSX 2.4L 02/12/2010  
 Run Notes: Averaged AEM 21-697 CAI installed 3<sup>rd</sup> gear runs  
 AEM: 74.98°F 30.41 in-Hg, SAE: 0.96, Relative Humidity: 16 %

AEM21697