

**ADVANCE ADAPTERS INC.**

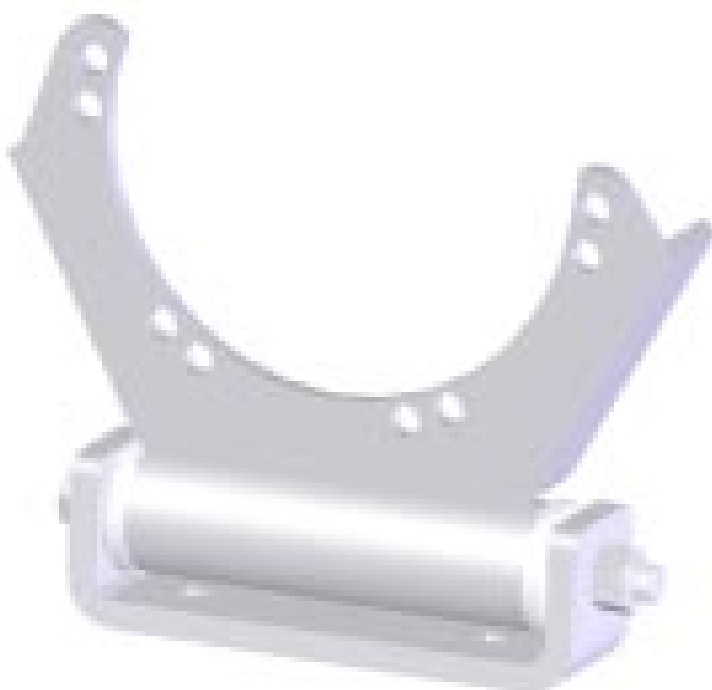
**P/N: 716055**

## **CROSSMEMBER KIT**

### **KIT CONSISTS OF:**

<b>No.</b>	<b>Qty</b>	<b>Part No.</b>	<b>Description</b>
1.	1	716055A	ADAPTER MOUNT
2.	1	716055B	CROSSMEMBER MOUNT
3.	2	716055C	URETHANE BUSHING
4.	1	716055D	BOLT BUSHING
5.	1	725022	1/2"-13 x 7.5" H.H.C.S.
6.	1	725005	1/2"-13 NYLON LOCKNUT
7.	2	724307	7/16"-14 x 1" H.H.C.S.
8.	2	724302	7/16" FLAT WASHER

This crossmember is designed to originally fit our Powerglide adapter, P/N 50-9200. We now use it on several of our adapter kits. Some stock transfer case linkages may interfere with one set of mounting holes on this support, if this is true on your application you may be required to cut a section on the mount off like shown below.



**SPECIAL NOTE:** The components packaged in this kit have been assembled and machined for specific type of conversions. Modifications to any of the components will void any possible warranty or return privileges. If you do not fully understand modifications or changes that will be required to complete your conversion, we strongly recommend that you contact our sales department for more information. This instruction sheet is only to be used for the assembly of Advance Adapter components. We recommend that a service manual pertaining to your vehicle be obtained for specific torque values, wiring diagrams and other related equipment. These manuals are normally available at automotive dealerships and parts stores.