

ADDICTIVE DESERT DESIGNS

2009 – Current Ram 1500

2010 – Current Ram 2500/3500

2015 - Current Ram Rebel

ADD Lite Side Step Installation Instructions

PREPARATION

1. Disconnect the negative terminal on the battery. Park the vehicle on level ground and set the emergency brake.
2. We recommend reading through the installation instructions in whole before performing the work.
3. Estimated Installation Time: **1-2 Hours**
4. You will need the following tools:
 - a. Ratchet
 - b. 13mm Socket
 - c. 18mm Socket
 - d. 9/16" Socket
 - e. 3/4" Wrench

Note: this installation requires 2 people for best results

5. Included in Kit:
 - 12** – Hex Head Bolts – M8-1.25 x 30mm
 - 12** – Flat Washers – 5/16"
 - 12** – Knurled Rivet Nuts – 3/8"-16
 - 12** – Flat Washers – 3/8"
 - 12** – Nylon Locking Nuts – 3/8"-16
 - 1** – Grade 8 Hex Head Bolt – 3/8"-16 x 1 1/2"
 - 2** – Grade 8 Washers – 3/8"
 - 1** – Nut – 1/2-13

INSTALLATION

1. From underneath the truck, find the three sets of holes that lay along the inner pinch weld area. (Fig A) Some trucks have nuts welded inside these holes, while some do not. If your truck has welded nuts, please skip to Step 3. If your truck does not have welded nuts, move on to the next step. (Fig B)

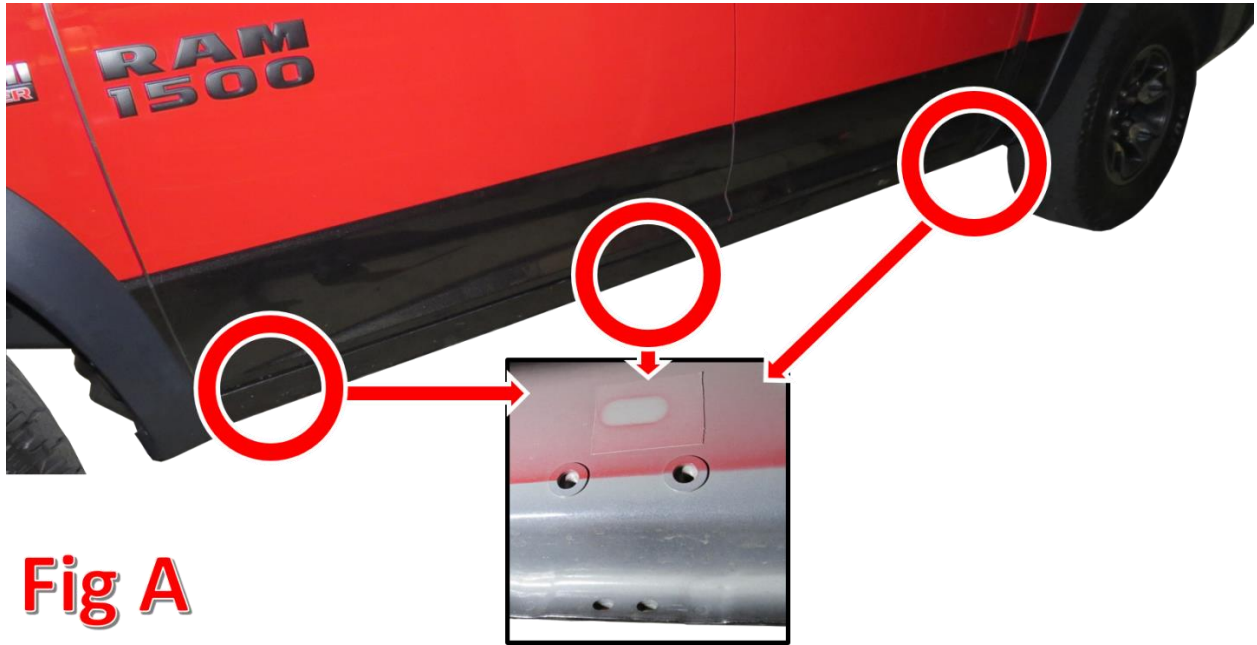


Fig A

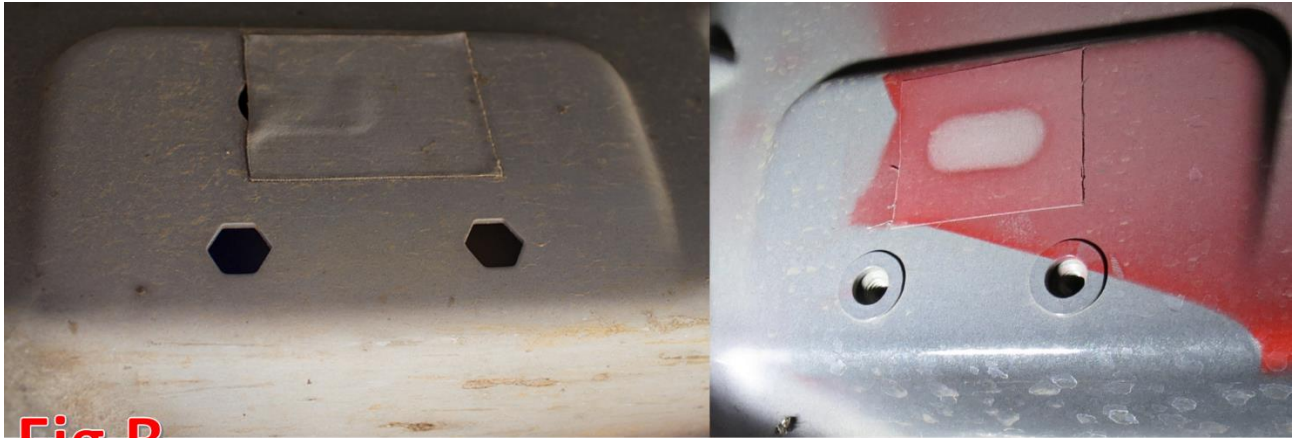


Fig B

No Nuts

Welded Nuts

2. If your truck does not have welded nuts, install the supplied 3/8" Rivet Nuts (x6) into the side step mounting holes. (Fig D)
 - a. Use the supplied 3/8" Grade 8 Bolt (x1), 3/8" Grade 8 Washers (x2), and 1/2" Nut (x1) to configure a rivet nut installation tool. Arrange them as shown in Fig C.

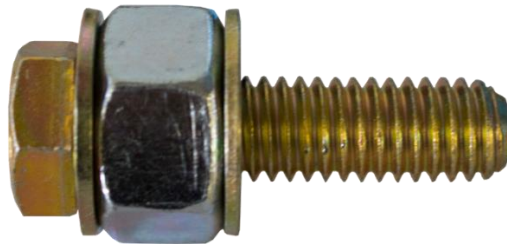


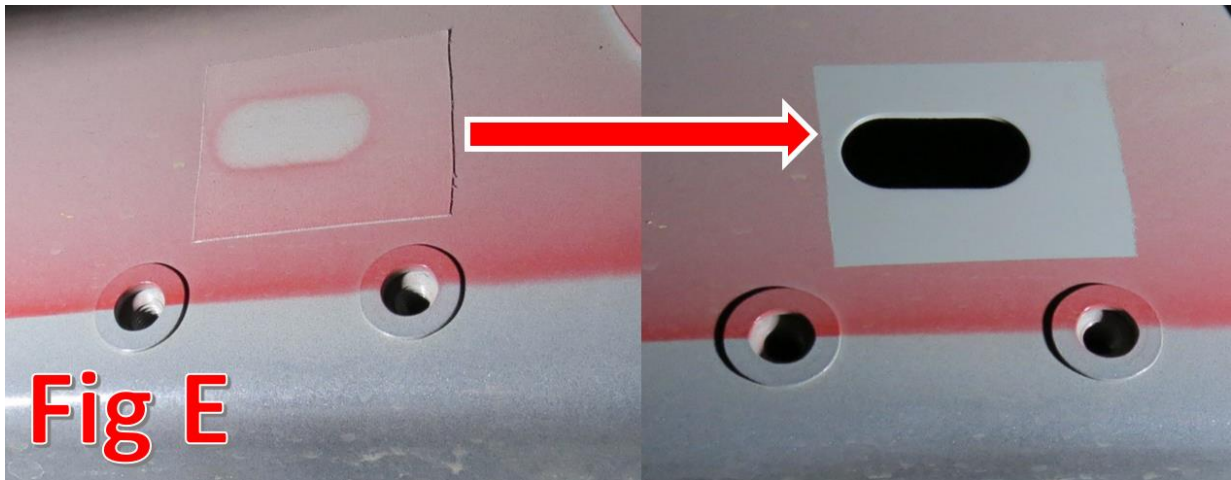
Fig C

- b. Push the Rivet Nuts (x6) into the side step mounting holes.
- c. Thread the Rivet Nut Installation Tool loosely into the rivet nuts.

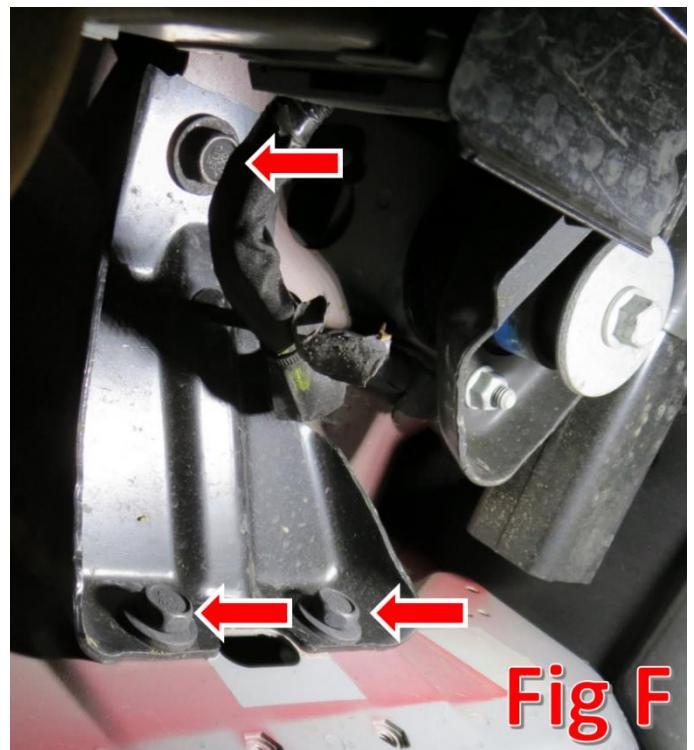
- d. While holding the 1/2" Nut steady, use a 9/16" Socket to screw in the Rivet Nut Installation Tool until it gets tight. Then, back the tool out.



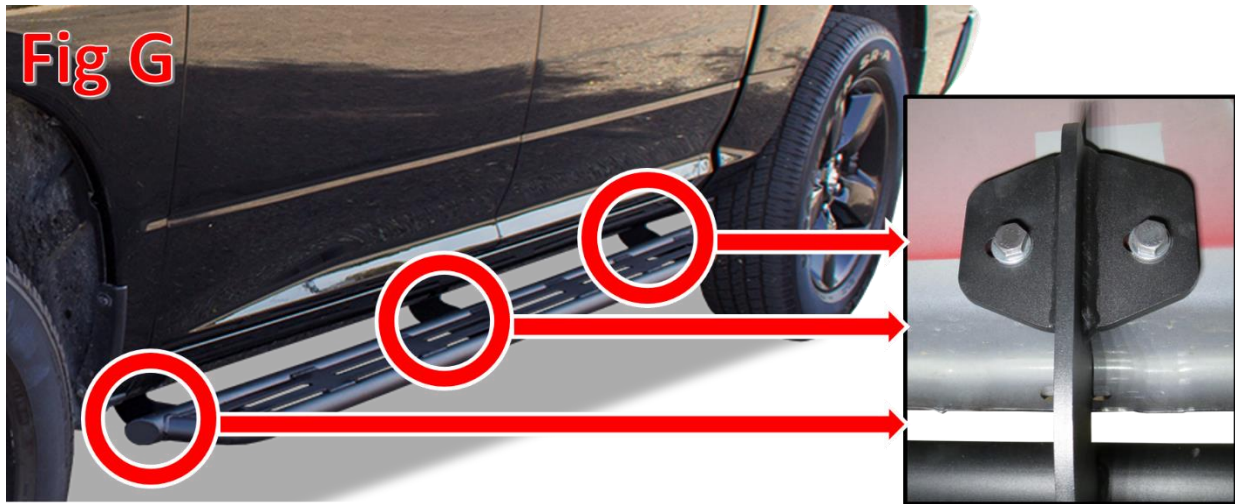
3. Pull off the piece of tape that sits directly above each set of holes. (Fig E)



4. This step only applies to some trucks. If your truck does not have this bracket, please disregard. Remove the bracket that sits above the front, driver side set of mounting holes. There are three 18mm bolts that hold it in place. (Fig F)



5. Set the side step in place with the upper hooks in the holes that were uncovered in Step 3 and the bolt holes aligned with the mounting holes on the truck.
6. Secure the Side Steps to your truck. (Fig G)
 - a. If your vehicle had welded nuts on it, use the supplied M8 x 30mm Bolts (x6) and 5/16" Washers (x6). Leave these bolts finger tight for now.
 - b. If you installed the supplied Rivet Nuts, use the supplied 3/8" Bolts (x6) and 3/8" Washers (x6). Leave these bolts finger tight for now.
 - c. Once all of the bolts are loosely installed, go back and tighten each bolt to 20 foot pounds.



7. Repeat the entire process on the other side of the truck.
8. Stand back and enjoy your new ADD Lite Side Steps.
9. Check and re-tighten if needed, all mounting bolts after 100 miles and periodically thereafter.

