

# ADDICTIVE DESERT DESIGNS

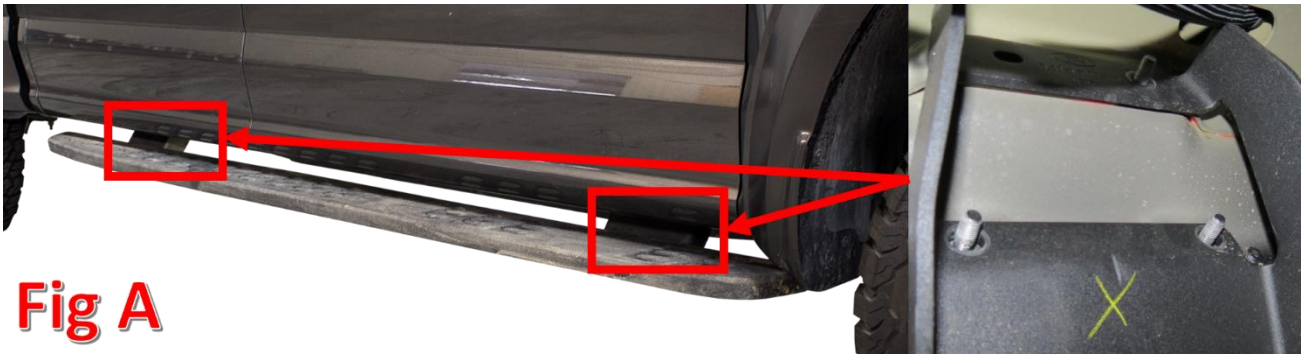
## 2015 – Current F150/Raptor Race Series R Side Steps Installation Instructions

### PREPARATION STEPS

1. Disconnect the negative terminal on the battery. Park the vehicle on level ground and set the emergency brake.
2. We recommend reading through the installation instructions in whole before performing the work.
3. Estimated Installation Time: **2 Hours**
4. You will need the following tools:
  - a. 13mm Socket
  - b. Ratchet
  - c. Wire Crimpers
  - d. Utility Knife
5. Included in Kit:
  - 12** – Nylon Lock Nuts – M8 x 1.25
  - 12** – Flat Washers – M8
  - 1** – LED Wire Harness (If equipped with LED Lights)

### INSTALLATION INSTRUCTIONS

1. If your vehicle does not have OEM Side Steps, skip to Step 3. Remove the six 13mm nuts (3 per mount) that hold the OEM side step onto the vehicle. Keep these nuts if you would like to reuse them. (Fig A)



**Fig A**

2. Remove the OEM Side Step from the vehicle.
3. Line your new side step up to your vehicle. The side with the shorter gap between the mount and end of the step goes towards the front of the vehicle. (Fig B)

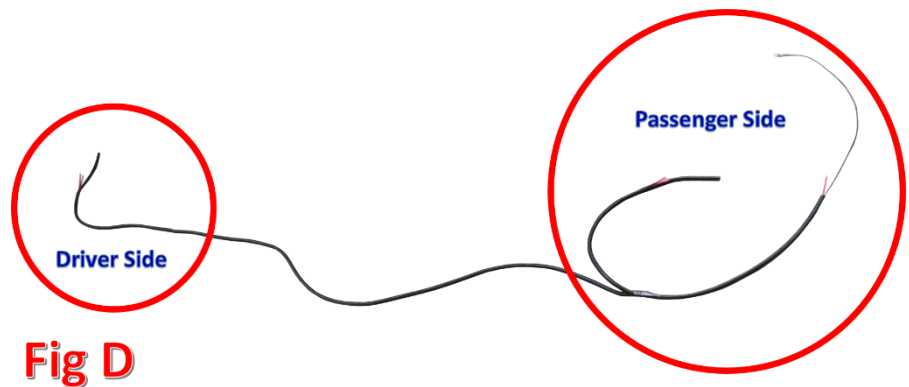


**Fig B**

4. Set your ADD Side Step into place on the 6 studs. Secure the Side Steps by either installing the OEM Nuts (x6), or installing the supplied M8 Lock Nuts (x6) and M8 Washers (x6). (Fig C) Install nuts finger tight until they are all installed, then go back and tighten them to the manufacturer's specification.



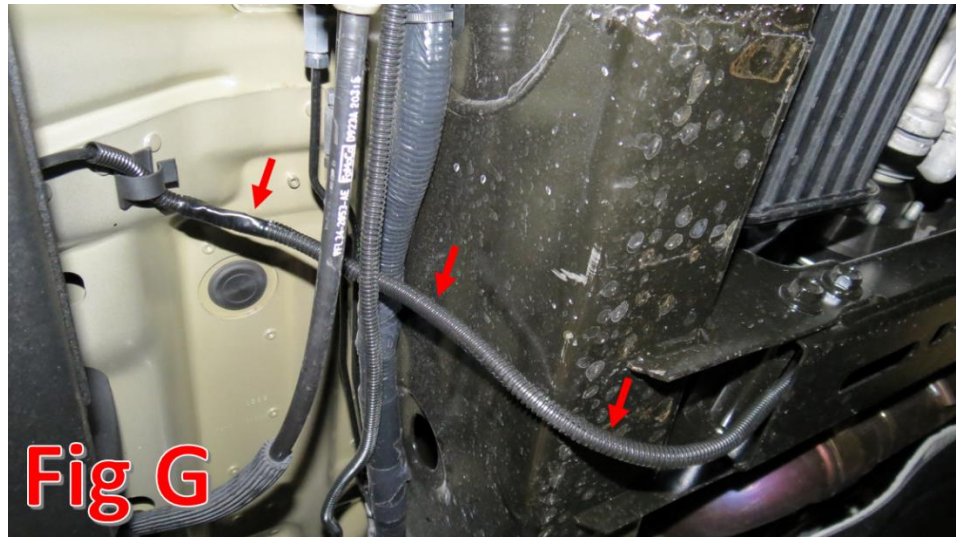
5. Repeat steps 1-4 on opposite side of vehicle. If equipped with LED lighting, follow Steps 6-17.
6. From the passenger side of the vehicle, locate the lighting wire harness and send the single end through the transmission cross member to the driver side of the vehicle. Refer to Fig D & E.



7. On the driver side of the vehicle, use wire crimpers to crimp the wires coming from the side steps to the wires on the driver side of the LED harness (red to red and black to black). Refer to Fig F.
  - a. Be sure to route the LED harness out of the way of any hanging wires or moving parts. Fig G shows how we routed our harness.
  - b. Also be sure to tuck the wires back into the plastic conduit once the crimping is done. If there are any exposed wires, cover them with electrical tape.



**Fig F**



**Fig G**

8. On the passenger side of the vehicle, connect the equal length red and black wires on the wiring harness to the red and black wires coming from the side steps the same way you did on the driver side. Be sure to tuck the wires back into the plastic conduit once the crimping is done. If there are any exposed wires, cover them with electrical tape.
9. Open the passenger door and remove the three kick panels shown in Fig H. There are no tools necessary for this. They are held on by clips and can be pulled off by hand.



**Fig H**

10. Lift the carpet in front of the seat and find the rubber plug. Remove this plug and cut a slit in it for the wiring harness to fit through. Feed the wires through the slit you just cut. Refer to Fig I.

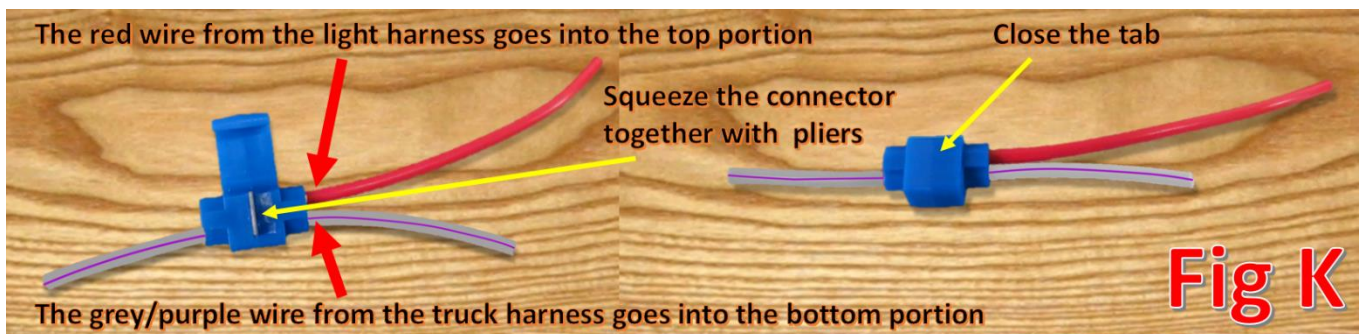


**Fig I**

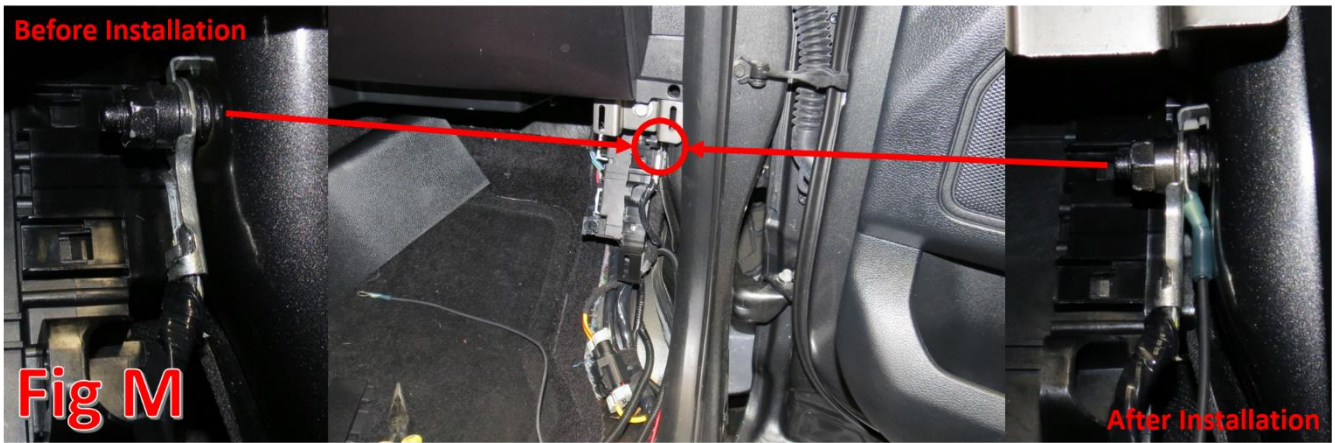
11. After Step 9, the undercarriage of the passenger side should look like Fig J.



12. Cut open the wire bundle sitting under the kick panels that were removed in Step 9. Be careful to cut only the tape and not any of the wires in that bundle.
13. Locate the grey wire with a purple stripe (this is the wire for the dome light circuit). Connect the remaining red wire in the lighting harness to this grey/purple wire using the supplied connector.
14. Figure K shows an illustration of how the connector works (slide the grey/purple wire into the bottom portion and the red wire from the lighting harness into the top portion, squeeze the connector together with pliers, and flip the tab down), while Figure L shows the wire that goes in the bottom portion of that connector.



15. Locate the ground wire that is bolted to the body underneath the kick panels removed in Step 9. Remove the 13mm bolt holding that ground wire in place, and use it to connect the ground wire from the light wiring harness to the body. Refer to Fig M.



16. Reconnect your battery terminals and make sure the LED lighting turns on when the door is opened.
17. Reinstall the panels you removed in Step 9.
18. Stand back and enjoy your new ADD Race Series R Side Steps.
19. Check and re-tighten if needed, all mounting bolts after 100 miles and periodically thereafter.

