



Preparation:

- Disconnect the negative battery terminal. Park the vehicle on level ground and set the emergency brake.
- We recommend reading through the installation instructions in whole before performing the work.
- When button head bolts are being used, install the supplied washer on the nut side. Then, hold the bolt stationary and only turn the nut to tighten. Do not turn the bolt to tighten hardware assembly, unless otherwise noted.
- Estimated Installation Time: **2 Hours for OEM Removal/Bumper Installation**

1 Additional Hour to Wire Lights

*****This installation requires 2 people for best results*****

*****Labor Rates are based on a vehicle with no pre-existing damage. Wiring labor is based on a standard wiring procedure with light switches installed in an easily accessible location. Custom light triggering or switch mounting location will result in a greater labor charge.*****

You will need the following tools:

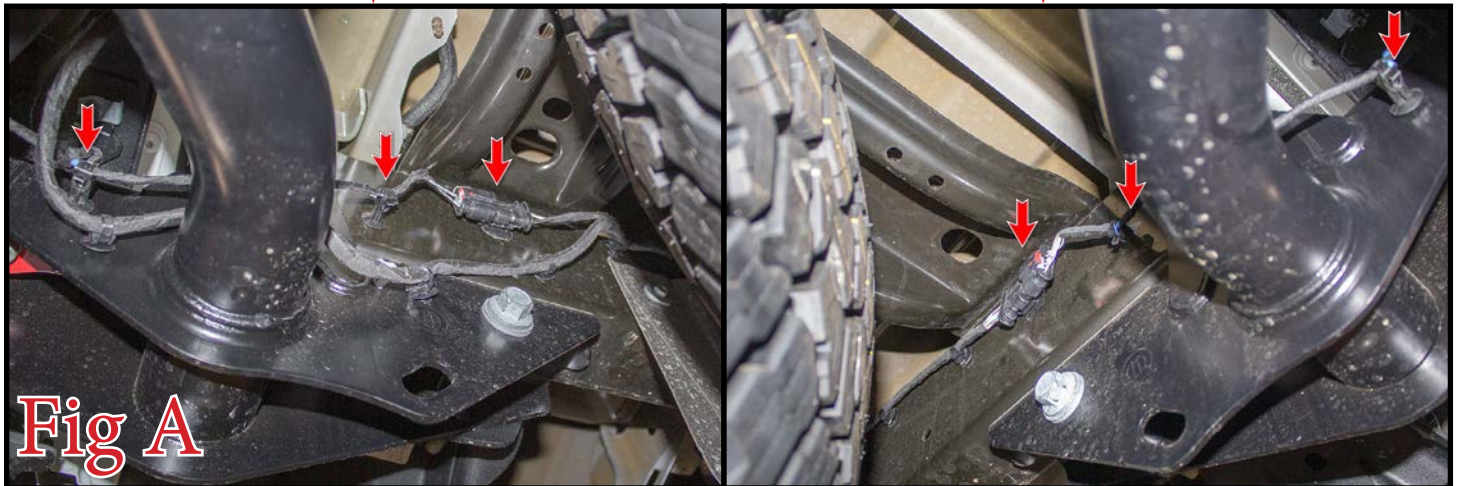
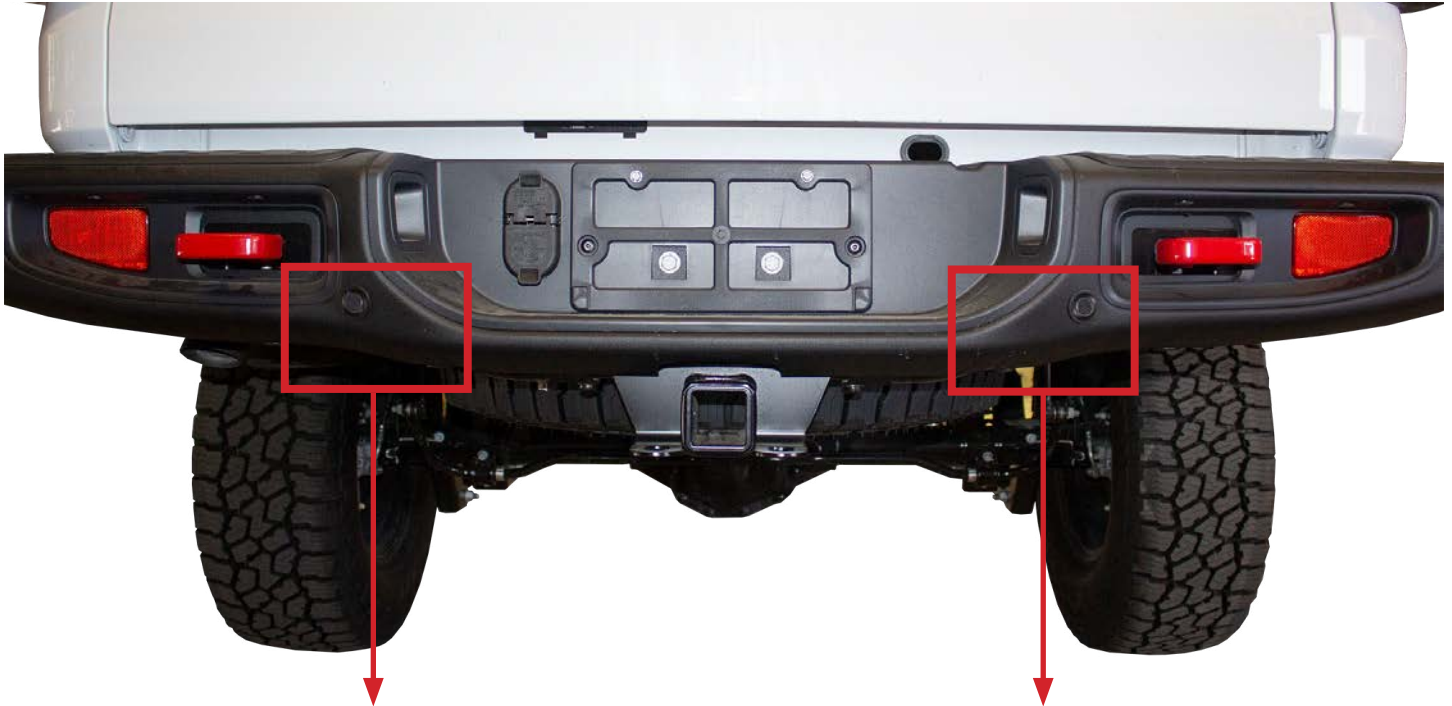
- | | | |
|------------------------|-------------------|-----------------------------|
| - Ratchet | - 15mm Socket | - 16mm Socket |
| - 18mm Socket | - 21mm Socket | - 5/16" Allen Wrench/Socket |
| - 3/4" Socket & Wrench | - T50 Torx Socket | - Cutoff Wheel |
| - Black Paint | - Epoxy | |

Included in Kit:

- | | |
|--|---|
| 2 - Hex Head Bolts (1/2"-13 x 1 1/2") | 4 - Flat Washers (1/2") |
| 2 - Nylon Lock Nuts (1/2"-13) | 2 - Black Button Head Bolts (1/2"-13 x 1 1/2") |
| 2 - Black Flat Washers (1/2") | 2 - Black Nylon Lock Nuts (1/2"-13) |

Removal:

1. Underneath the truck, there is one connector on each frame rail that needs to be unplugged. Then, release the two plastic clips (per side) that hold the harness (towards the bumper) to the frame rail. (Fig A)





2. From underneath the vehicle, unplug the connector on the back side of the trailer plug. (Fig B)

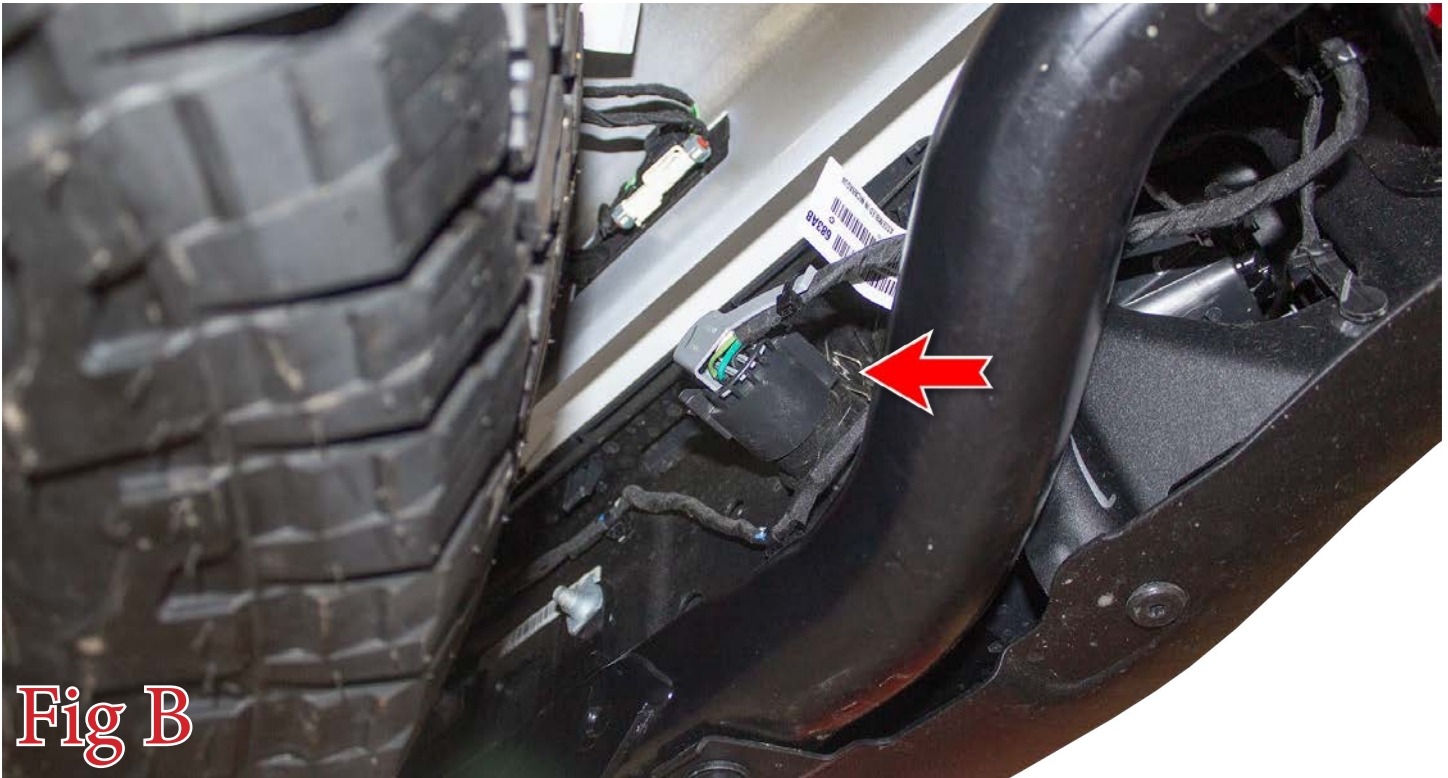


Fig B

3. Remove your license plate. Then, use a 16mm Socket to remove the two bolts that sit behind the license plate. (Fig C)



Fig C



4. Using a T-50 Torx Bit, remove the two bolts on either side of the trailer hitch. (Fig D)



5. If your vehicle has a rocker panel guard, use a 16mm Socket to remove the three bolts (per side) that hold the rocker panel guard to the truck. (Fig E)





7. Using a 16mm Socket, remove the Bumper Mounting Nuts (2 per side). Then, remove the OEM bumper from the vehicle. (Fig F)

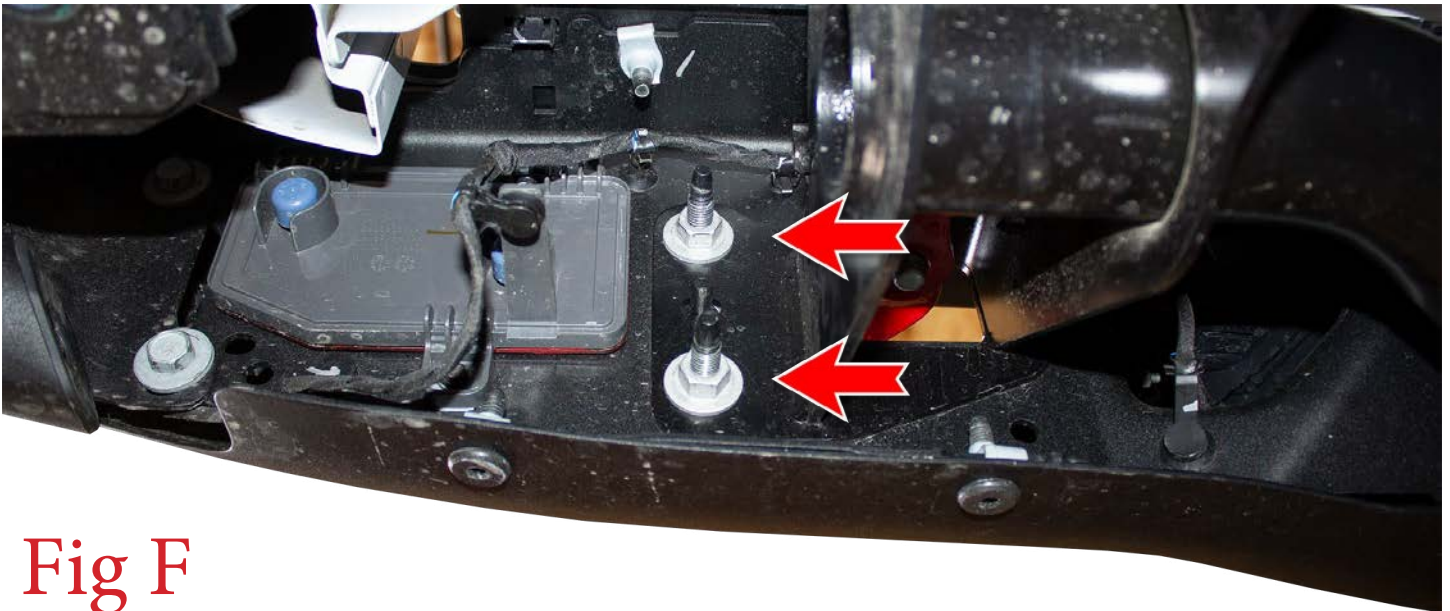


Fig F

6. Use a 21mm Socket to remove the tow hook mounting bolts (2 per hook). Then, remove the hooks. (Fig G)



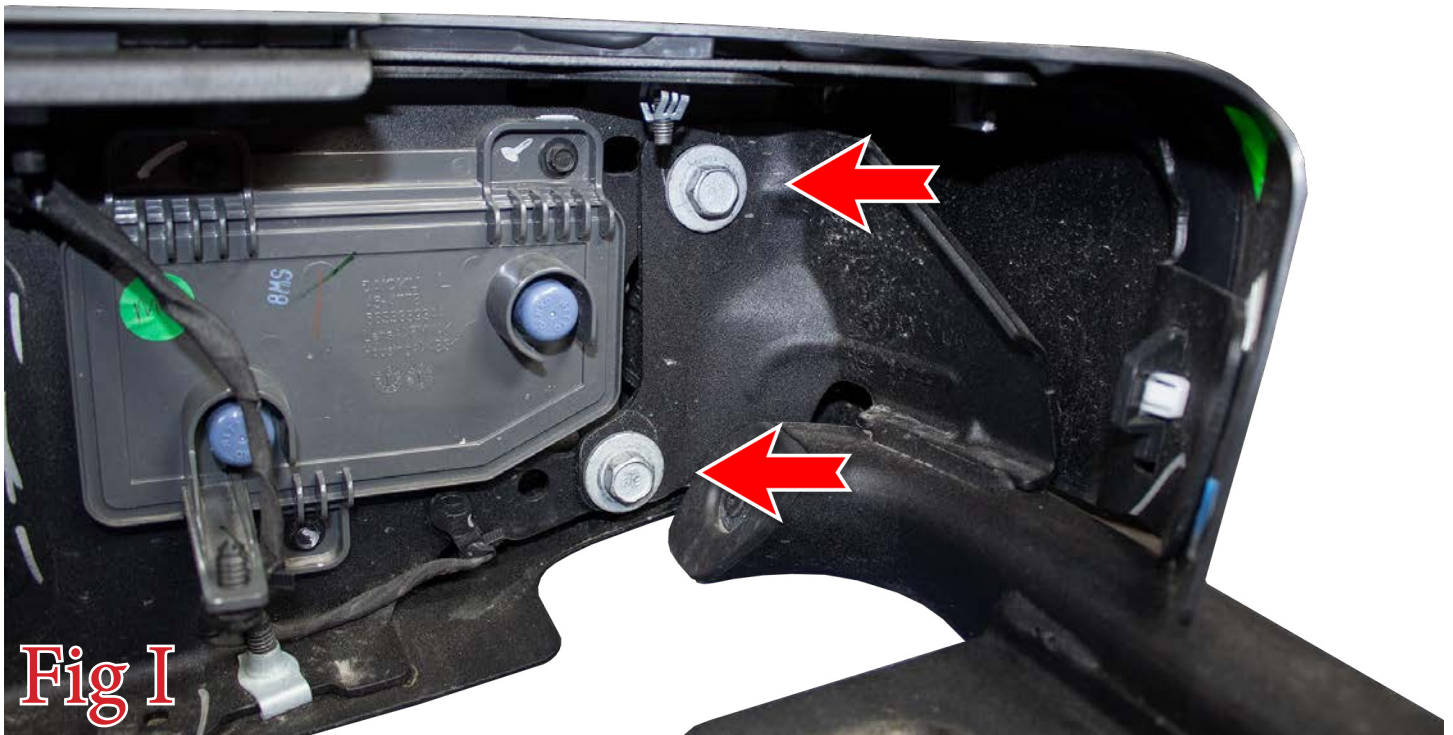
Fig G



8. Use a 15mm & 18mm Socket to remove the mounting bolts (3 per side) for the rocker guard bracket. Then, remove that bracket. (Fig H)



9. With the bumper sitting on a work bench, use a 15mm Socket to remove the two bolts (per side) that hold the metal rocker panel guards to the bumper. Then, remove these guards from the bumper. (Fig I)



10. Remove the parking sensors from the OEM bumper. Do this by spreading the two tabs on the back side of the mounting ring, then pushing the sensors out the back side of the ring. After that, press those same two tabs in to release the backer from the mounting ring. With the backer removed, the mounting ring will push out the front of the bumper. **Make sure to keep track of what position/orientation these sensors come off the OEM bumper so they can be installed in the same position/orientation on your new bumper.** (Fig J)



Spread these two tabs, then push the parking sensor out the back side of its mounting ring.



Squeeze these two tabs, then remove the backer ring from the bumper.



Push the mounting ring out the front side of the bumper.

Fig J



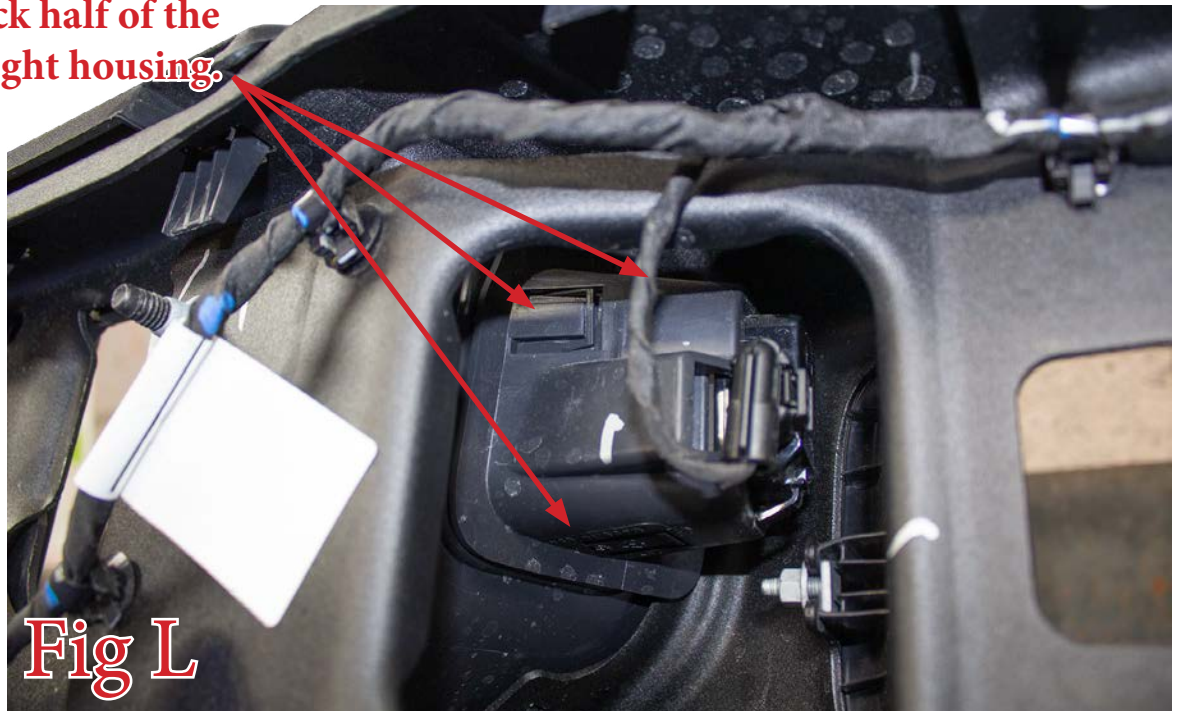
11. Remove the trailer plug from the bumper by pressing in the two tabs on the back side of the plug. (Fig K)

Squeeze these tabs to remove the trailer plug



12. Unplug the license plate lights, then remove the license plate lights from the bumper. To do this, first release 3 of the 4 clips on the housing (shown in Fig L).

**Release these three clips to
release the back half of the
license plate light housing.**



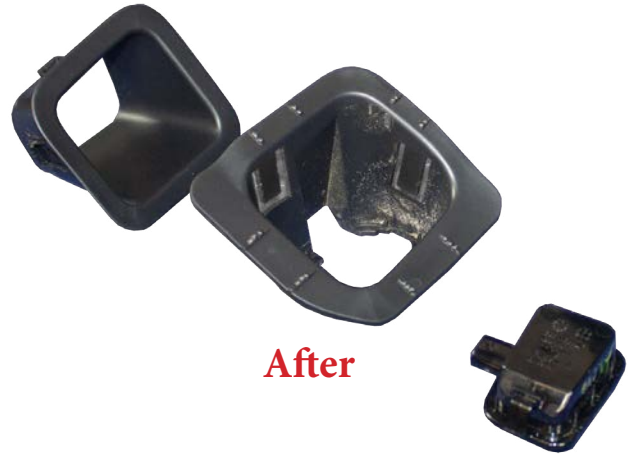


13. Press in the tab on the license plate light to release it from its housing. (Fig M)

**Press in this tab to release
the license plate light.**



Fig M Before



After

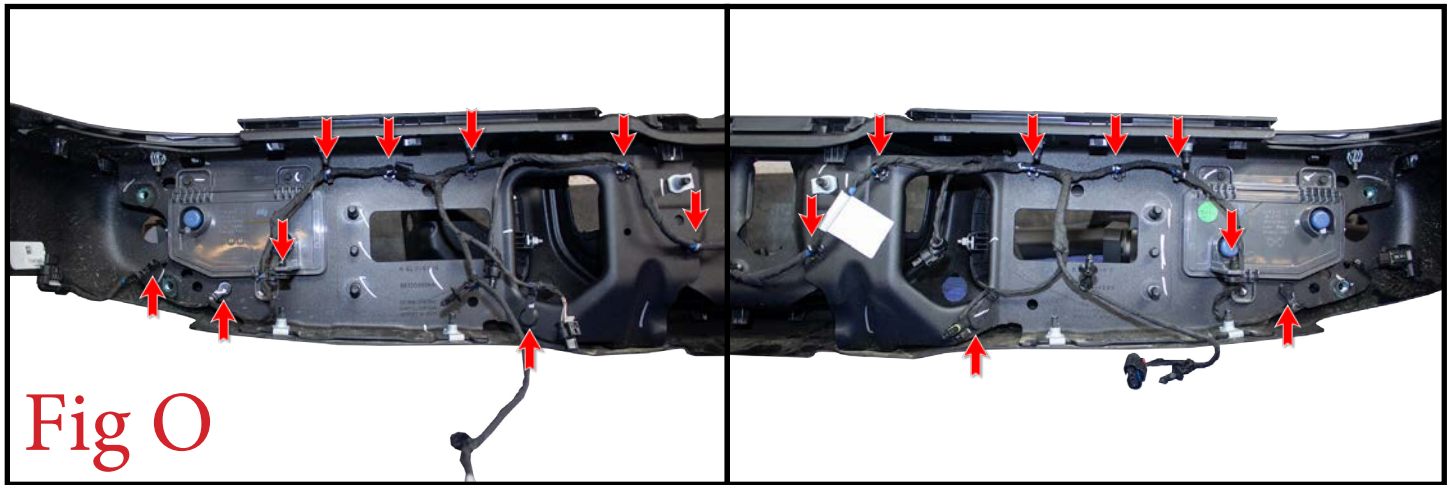
14. Cut the mounting tab off the license plate light along the line shown in (Fig N).



Fig N



15. Remove the plastic clips (x21) that hold the bumper harness to the OEM bumper. Then, remove that harness from the bumper. (Fig O) (Not all clips are pictured)



16. Use a cutoff wheel or something similar to cut the license plate bracket off the vehicle's trailer hitch as shown in (Fig P). Once the bracket is off, grind it smooth and paint over any bare metal.



Installation:

17. Using epoxy or something similar, glue the license plate light onto your new bumper as shown in (Fig Q).



Fig Q

18. If you have any lights to install on your bumper, do so now. Please follow the light manufacturer's installation guide for mounting/wiring information.

19. Install the trailer plug by pressing it into its precut hole until it clicks into place. (Fig R)



Fig R



20. Install the parking sensors onto your bumper. To do this, press the mounting ring into the bumper from the front side of the bumper. Then, put the locking ring in place from the back side of the bumper. Finally, press the sensor in from the back side until it clicks into place. **Make sure to install the sensors in the same position/orientation as they came off the OEM bumper.** (Fig S)



Fig S



21. Install the harness from the OEM bumper onto your new bumper. Make sure to install it in the same position as it came off the OEM bumper so the connectors on the harness line up with the correct connectors on the vehicle. (Fig T)



Fig T

22. Set the bumper in place on the vehicle. For the upper mounting bolts, use the supplied Hex Head 1/2" Bolts (x2), 1/2" Washers (x4), and 1/2" Lock Nuts (x2). It is easier if you put the upper bolts in place on the bumper before installing the bumper on the vehicle. (Fig U) For the lower mounting bolts, use the supplied Black Button Head 1/2" Bolts (x2), Black 1/2" Washers (x2), and Black 1/2" Lock Nuts (x2). Leave these bolts loose for now.

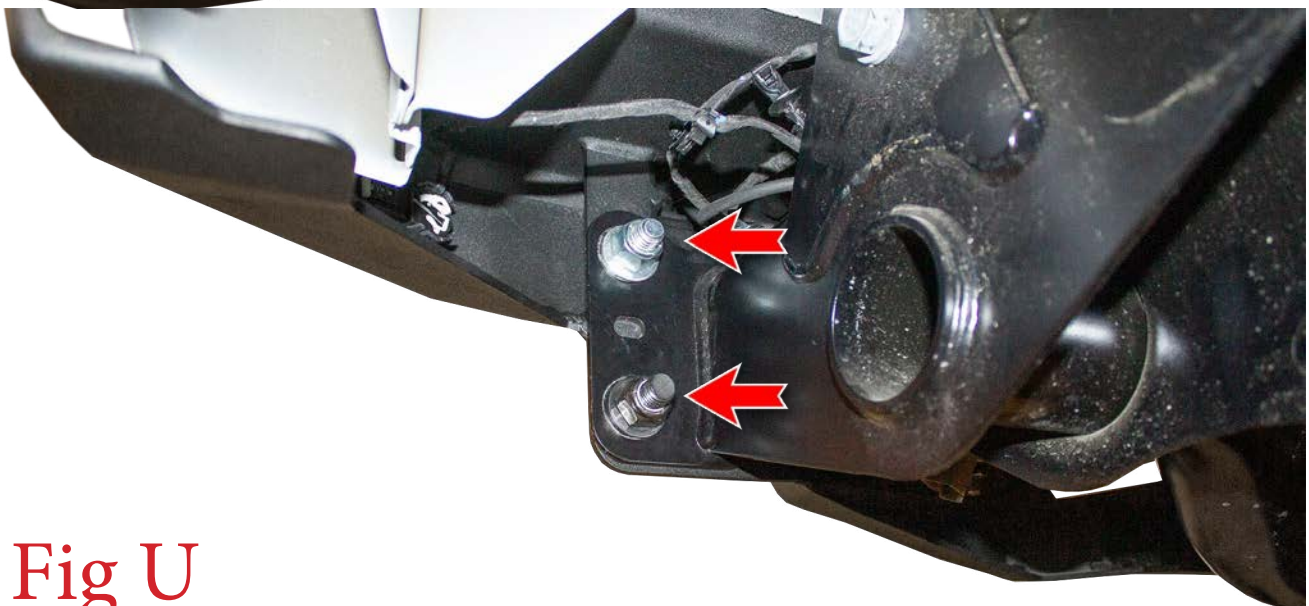
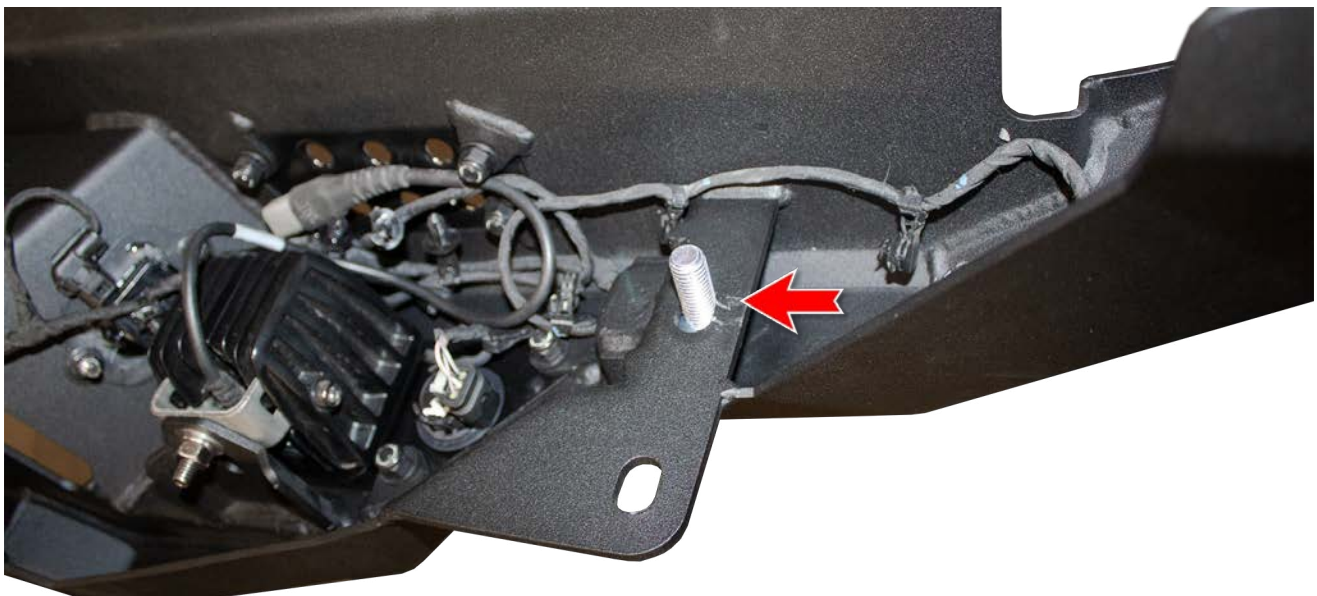


Fig U



23. Align the bumper so it is centered left to right and straight in relation to the tailgate. Then, tighten the 1/2" mounting bolts to 70 foot pounds.
24. Stand back and enjoy your new ADD Stealth Fighter™ Rear Bumper.
25. Check and re-tighten, if needed, all mounting bolts after 100 miles and periodically thereafter.

