



## Preparation:

- Disconnect the negative battery terminal. Park the vehicle on level ground and set the emergency brake.
- We recommend reading through the installation instructions in whole before performing the work.
- Estimated Installation Time: **3 Hours**  
*\*\*This installation requires 2 people for best results\*\**

## You will need the following tools:

- |                             |                    |                    |
|-----------------------------|--------------------|--------------------|
| - Ratchet                   | - 10mm Socket      | - 17mm Socket      |
| - 3/4" Socket & Wrench      | - T-20 Torx Socket | - T-45 Torx Socket |
| - 5/32" Allen Wrench/Socket | - 9/16" Socket     | - 7/16" Wrench     |

## Included in Kit:

- |                                       |                                      |
|---------------------------------------|--------------------------------------|
| 2 - Hex Head Bolts (1/2"-13 x 1 1/2") | 4 - Flat Washers (1/2")              |
| 2 - Nylon Lock Nuts (1/2"-13)         | 4 - Hex Head Bolts (3/8"-16 x 1")    |
| 4 - Flat Washers (3/8")               | 4 - U-Nuts (3/8"-16)                 |
| 8 - Plastic Spacers (1/4")            | 8 - Button Head Bolts (1/4"-20 x 1") |
| 2 - Blind Spot Sensor Mounts (Lower)  | 2 - Blind Spot Sensor Mounts (Upper) |
| 2 - Bumper Mounting Brackets          |                                      |

## Removal:

1. Unplug the connector on the back side of the license plate lights. Then, release the clip on the back side of the license plate light housing to release it from the bumper. (Fig A)



**Fig A**



2. Unplug the connector on the back side of the trailer plug. Then, press in the two tabs on the back side of plug to release it from the bumper. (Fig B)



**Fig B**

3. Unplug the rear bumper harness connectors. There are two on the passenger side of the truck and one on the driver side of the truck. (Fig C)



**Fig C**



4. Pull the top plastic piece off of the OEM bumper. There are no tools required for this step, it pulls off by hand. (Fig D)



**Fig D**

5. From underneath the truck, remove the two bottom bumper mounting bolts. You will need a T-45 Torx Socket for this step. (Fig E)



**Fig E**



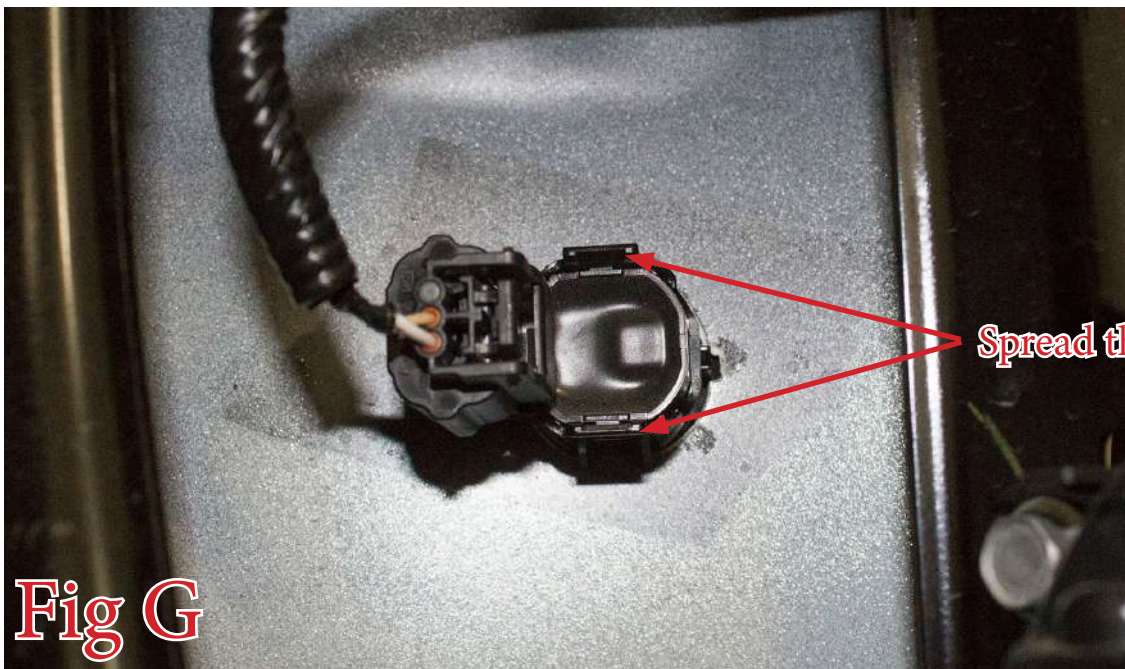
6. Using a T-45 Torx Socket, remove the upper bumper mounting bolts (x4). (Fig F)



**Fig F**

7. Remove the OEM bumper from the truck.

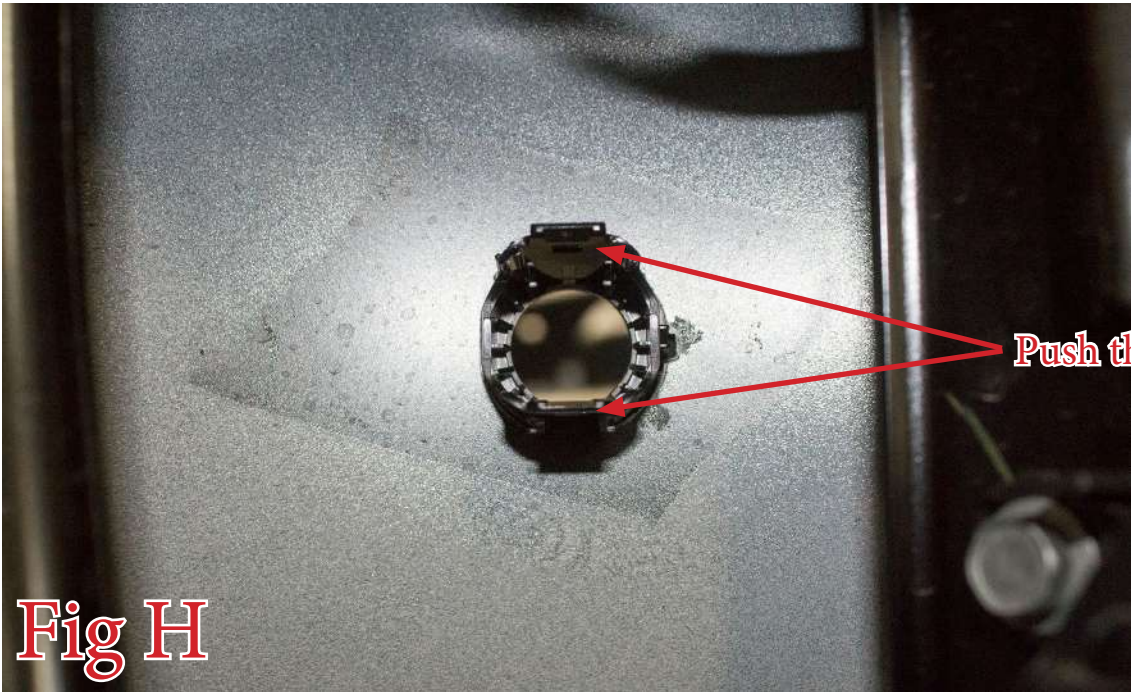
8. Remove the OEM parking sensors from the bumper. Do this by spreading the two tabs on the sensor mounting ring and pushing the sensor out the rear of the bumper. **Make sure to keep track of the position/order these sensors came out of the bumper so you can reinstall them in the same position/order.** (Fig G)



**Fig G**



9. Remove the OEM parking sensor mounting rings by pushing in the two tabs on the back side of the ring and pushing the ring out the front side of the bumper. **Make sure to keep track of the position/order these rings came out of the bumper so you can reinstall them in the same position/order.** (Fig H)

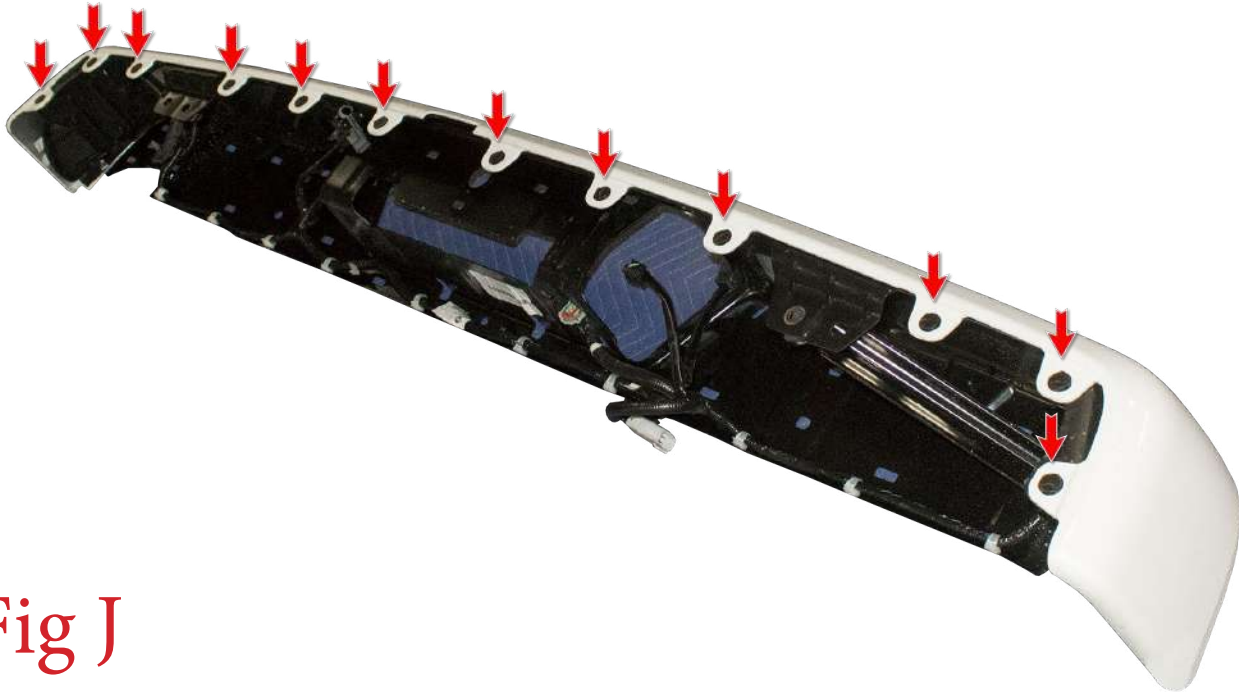


10. Remove the 6 clips on the top side of the OEM bumper. (Fig I)





11. Remove the 12 clips on the underside of the OEM bumper. (Fig J)



**Fig J**

12. Pull the inner/outer bumper pieces apart.

13. Use a 10mm Socket to remove the Blind Spot Sensor cover mounting bolts (x2) Then, pull this cover off. (Fig K)



**Fig K**

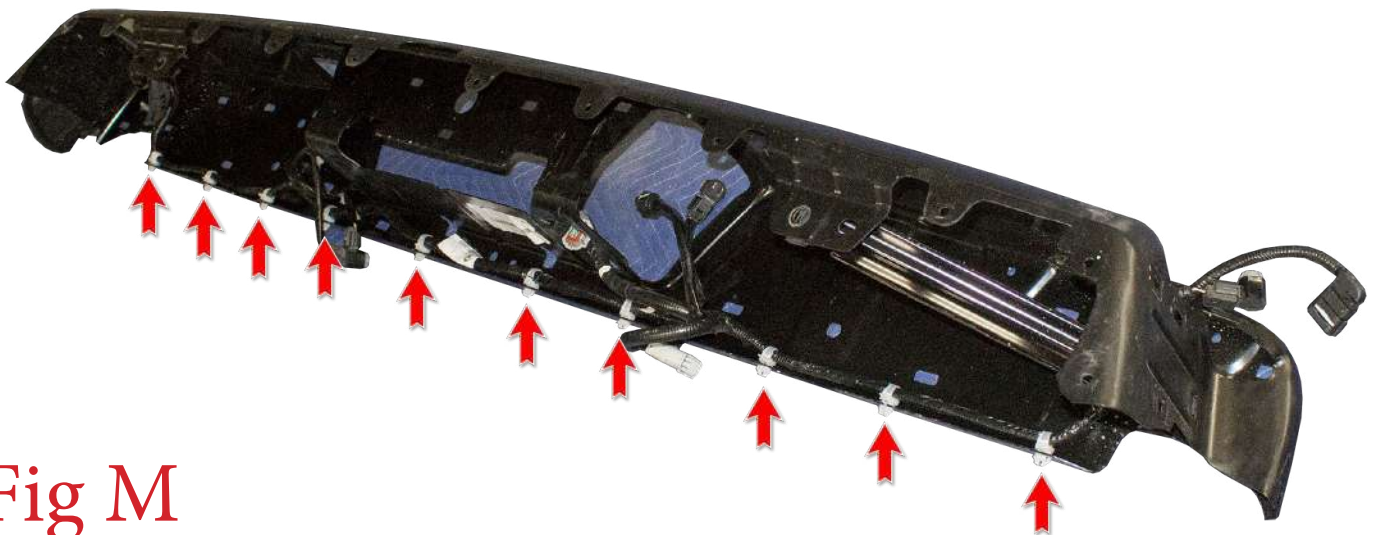


14. Using a T-20 Torx Socket, remove the Blind Spot Sensor mounting bolts (x2). Then, remove this sensor from the OEM bumper. (Fig L)



**Fig L**

15. Pull the plastic clips (x10) that hold the bumper harness in the OEM bumper. Then, remove that harness from the bumper. (Fig M)

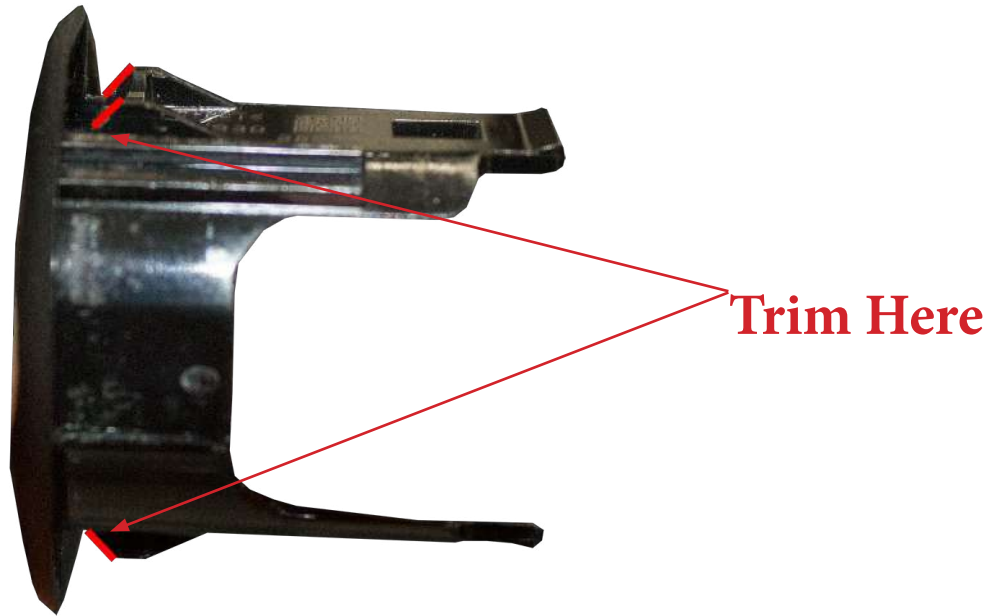


**Fig M**



## Installation:

16. Trim back the tabs on the parking sensor mounting rings until they properly click into place on your new bumper. Go a little bit at a time so you don't trim too far. **Install the parking sensor mounting rings on your new bumper in the same position/order as they came off the OEM bumper.** (Fig N)



**Fig N**

17. Install the parking sensors/parking sensor harness onto your new bumper. Do this by pressing the parking sensors into the mounting rings from the back side of the bumper. **Make sure to install the parking sensors in the same position/order as they came off the OEM bumper.** (Fig O)







18. Using a 5/16" Allen Socket and a 7/16" Wrench, remove the 4 outer bolts on your new bumper's side panels.  
(Fig P)



**Fig P**

19. Find the supplied Blind Spot Sensor Mounts (there is an upper and lower for each side). Position the sensor between the two mounts as shown in (Fig Q). There are not bolts that hold the sensor in the mounts, it simply sandwiches between the two brackets.



**Fig Q**

20. There are two different blind spot sensors. If your blind spot sensor looks like the one on the left in (Fig R), you will **NOT** need to use spacers when you mount it to the bumper. If your sensor looks like the one on the right, you **WILL** need to use spacers between the sensor mounting bracket and the bumper when you mount it.

**Does NOT Require Spacers**

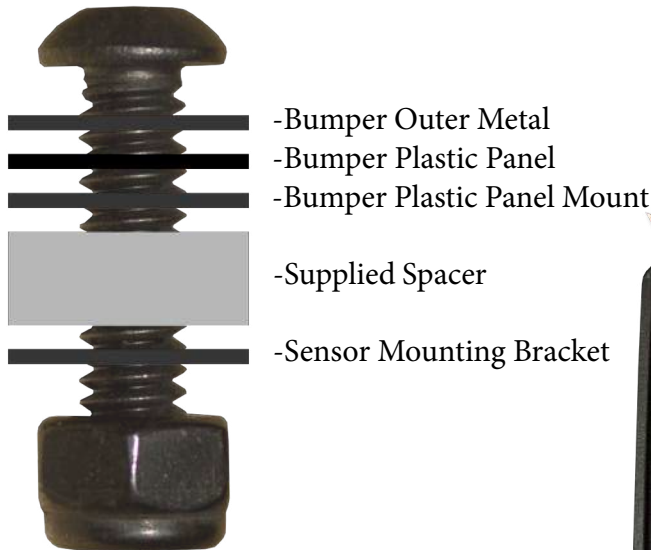
**DOES Require Spacers**



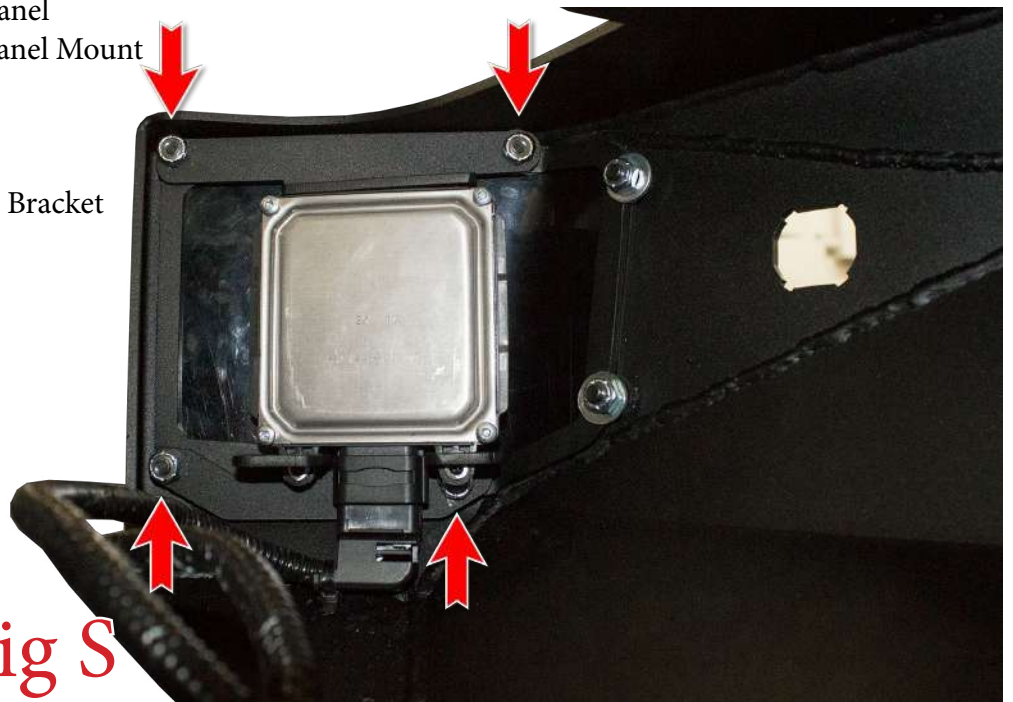
**Fig R**



21. Plug the module into the bumper harness before mounting it to the bumper. Then, mount the sensor/bracket assembly to your new bumper by reusing the supplied 1/4" Bolts (x8) with the nuts you removed in Step 18. (Fig S) **If your Blind Spot Sensor Module requires spacers, make sure to mount the supplied spacers (x8) between the module mounting brackets and the bumper.**

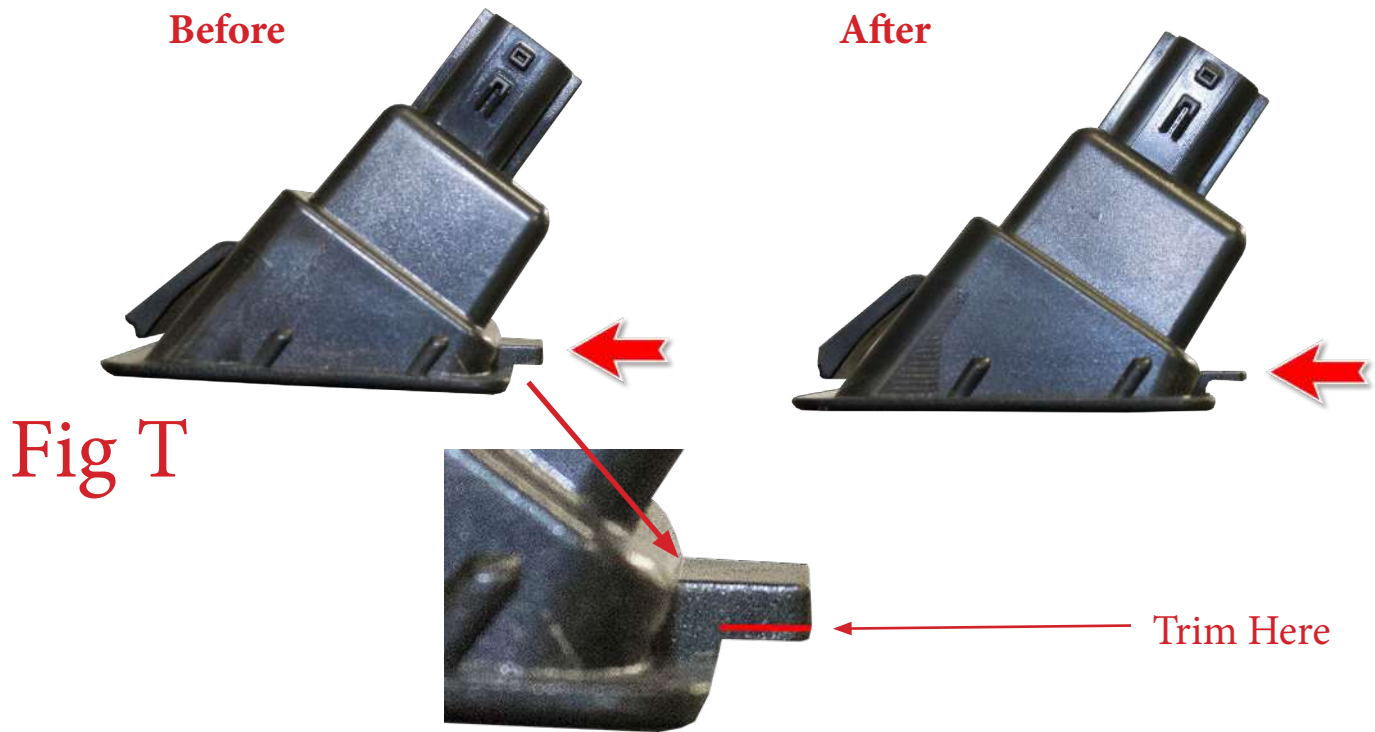


- Bumper Outer Metal
- Bumper Plastic Panel
- Bumper Plastic Panel Mount
- Supplied Spacer
- Sensor Mounting Bracket



**Fig S**

22. Find the license plate light housings from the OEM bumper. Trim the straight tab on the housing to account for the thicker material that your new bumper is made from. Make sure to trim a little bit at a time so you don't go too far. Only trim until the housing clicks into place. (Fig T)



23. Click the license plate light housings into place on your new bumper. Then, plug in the connector on the back side of the housings. (Fig U)

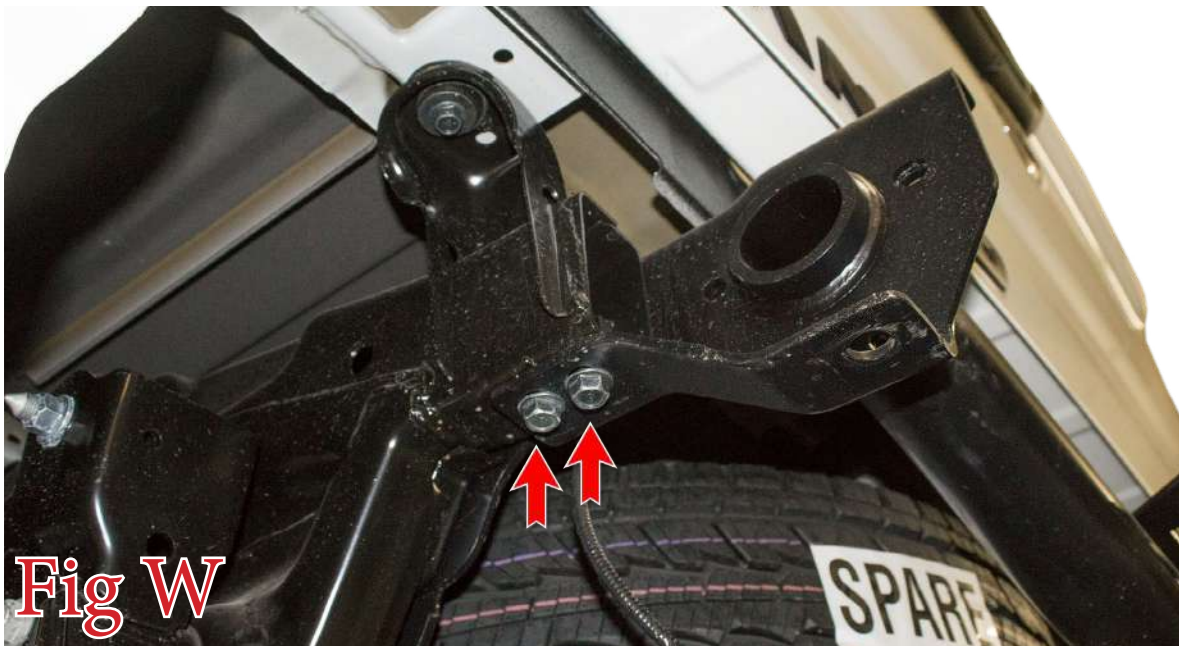




- 24. Install the trailer plug by pressing it into its precut hole on your new bumper. It is normal for the trailer plug to feel a little loose.
- 25. If you have any lights to install on your bumper, now is a good time to do so. Please follow the light manufacturer's guide for mounting/wiring information.
- 26. Install the supplied U-Nuts (x4) into the mounting holes on the back side of the bumper. (Fig V)



- 27. Use a 17mm Socket to remove the bolts (2 per side) referred to in (Fig W) from the underside of the truck's trailer hitch. **Save these bolts for reuse.**



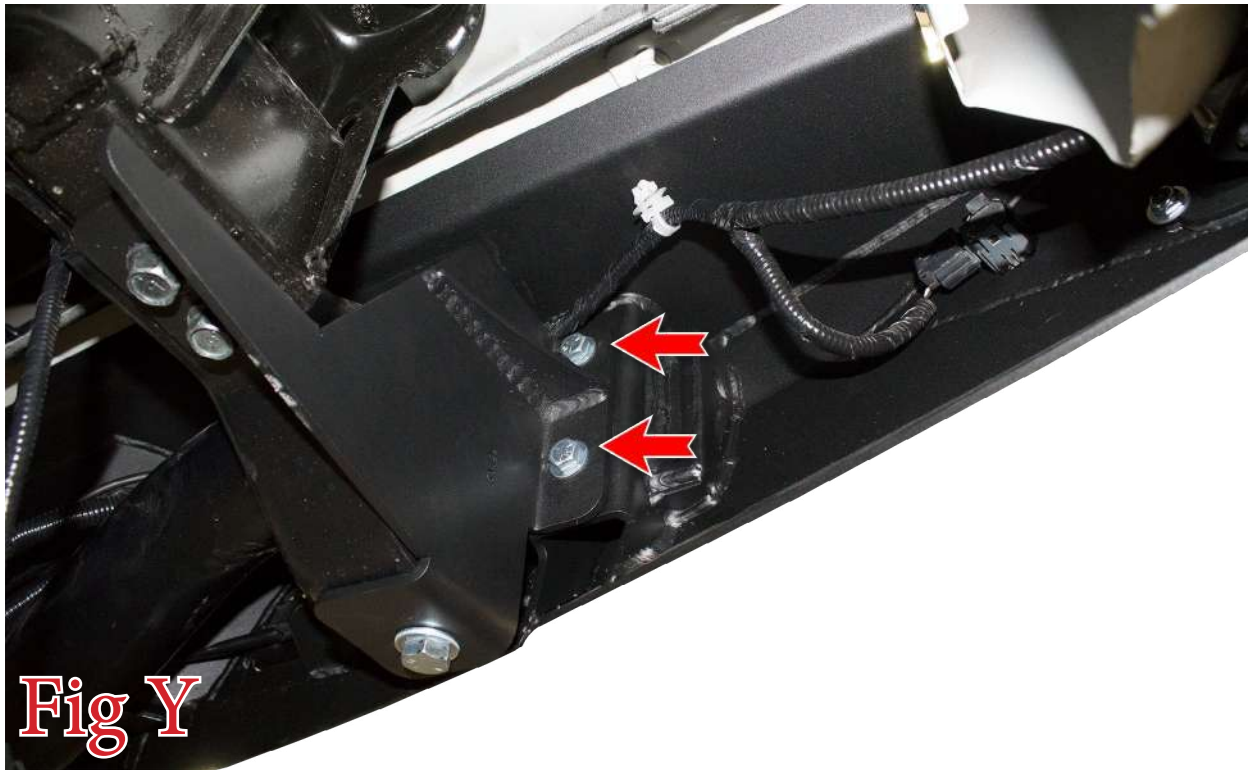


28. Install the supplied bumper mounting brackets (x2) onto the truck. Use the bolts you saved from Steps 6 and 27 as well as the supplied 1/2" Bolts (x2), 1/2" Washers (x4), and 1/2" Lock Nuts (x2). Torque the OEM Bolts to OEM torque specs. Torque the supplied 1/2" Bolts to 70 foot pounds. (Fig X)



**Fig X**

29. Set the bumper in place on the vehicle. Secure it to the vehicle by installing the supplied 3/8" Bolts (x4) and 3/8" Washers (x4) from the back side of the mounting brackets into the U-nuts on the bumper. Leave these bolts loose for now. (Fig Y)



**Fig Y**

30. Align the bumper so that it is centered left to right and also straight in relation to the tailgate. Then, torque the supplied 3/8" Mounting bolts to 25 foot pounds.

31. Stand back and enjoy your new ADD Stealth Fighter™ Rear Bumper.

32. Check and re-tighten, if needed, all mounting bolts after 100 miles and periodically thereafter.



**ADDICTIVE DESERT DESIGNS®**

2016-Current Nissan Titan XD  
Stealth Fighter™ Rear Bumper Installation Instructions



Looking for dependable off-road bumpers? Visit our website.