

Preparation:

- Disconnect the negative battery terminal. Park the vehicle on level ground and set the emergency brake.
- We recommend reading through the installation instructions in whole before performing the work.
- Estimated Installation Time: **2 Hours**

*****This installation requires 2 people for best results*****

You will need the following tools:

- Ratchet
- 9/16" Socket
- 12mm Socket
- 19mm Socket

Included in Kit:

- 4 - Hex Head Bolts (3/8"-16 x 1")
- 4 - Flat Washers (3/8")
- 4 - U-Nuts (3/8"-16)
- 2 - Bumper Mounting Brackets
- 4 - Spacers

Removal:

1. Unplug the connector on the back side of the license plate lights.
2. Remove your license plate.
3. Unplug and remove the Trailer Plug. (Fig A)





4. From underneath the truck, unplug the bumper harness connectors on the passenger side of the vehicle. (Fig B)



5. Remove the plastic clip that sits behind the license plate. (Fig C)





6. From underneath the truck, remove the two plastic clips referenced in (Fig D).



7. Carefully pull the plastic pieces off of each corner of the bumper. There are no tools required for this step. The pieces are held on by clips and can be pulled off by hand. (Fig E)





8. Carefully pull up on the center plastic piece of the bumper. This section can also be removed by hand. If your vehicle has parking sensors, push the sensors out the back side of the mounting rings as you remove this piece.
(Fig F)



Fig F

9. Using a 12mm Socket and Wrench, remove the four bolts (per side) shown in (Fig G).

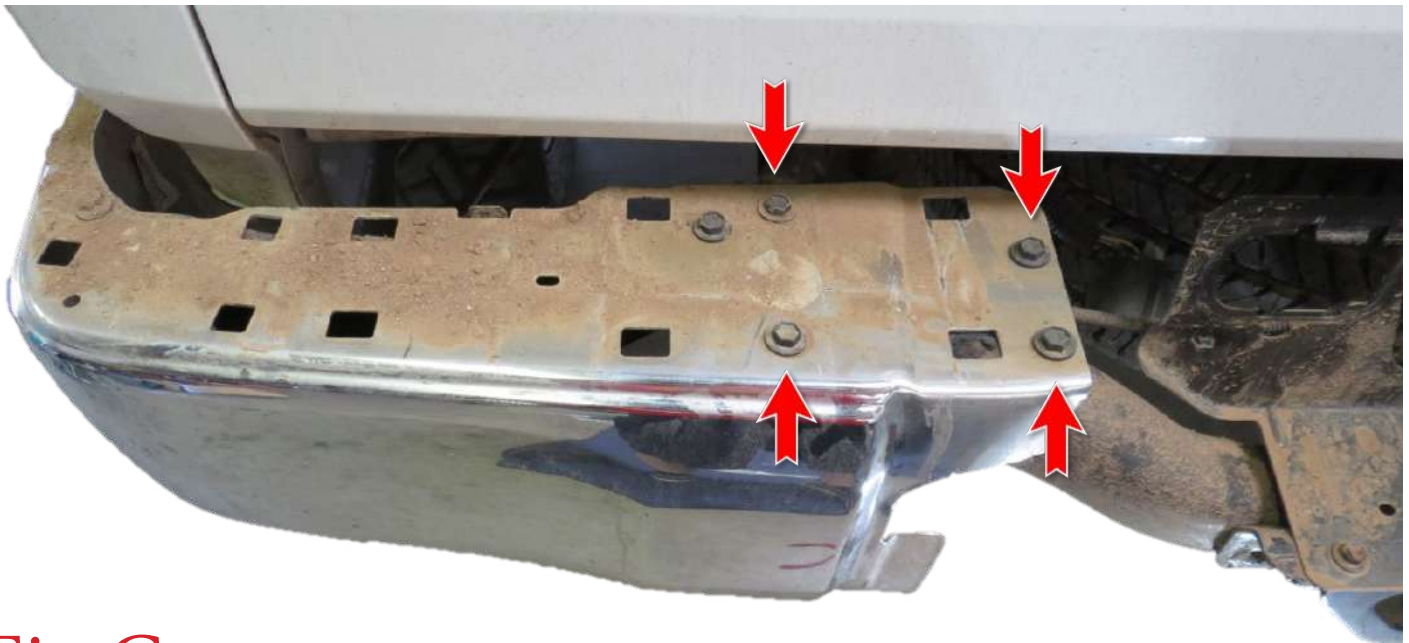


Fig G



10. From underneath the truck, use a 12mm Socket to remove the two bolts (per side) referenced in (Fig H).



Fig H

11. Remove both bumper side pieces from the vehicle. If you have parking sensors, push the sensor through the back side of the mounting ring as you pull the pieces off. If you have a blind spot sensor, you will also have to unplug that as you pull the pieces off.

12. Using a 12mm Socket, remove the two nuts holding on the bumper mounting bracket. Then, remove that bracket. Repeat this step on the other side of the vehicle. (Fig I)



Fig I

13. Use a 12mm Socket to remove the two bolts holding on the license plate bracket. Then, remove that bracket from the vehicle. (Fig J)



Fig J

14. Remove the parking sensor mounting rings from the OEM bumper. Do this by pressing in the tabs on the back side of the mounting ring and pushing the ring out the front of the bumper. **Keep track of the position and order of the sensor mounting rings so that you can install them on your new bumper in the same position/order.** (Fig K)

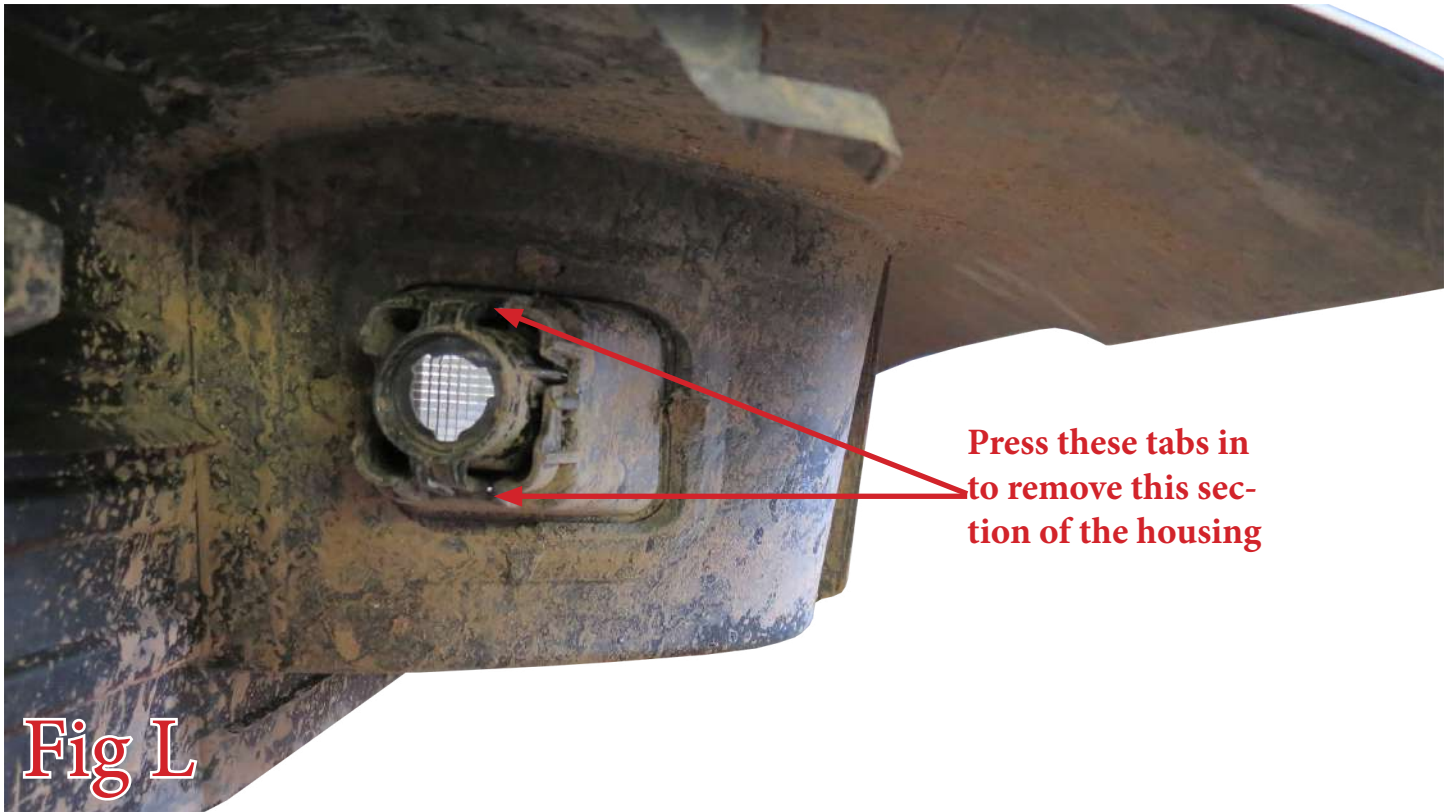


Fig K

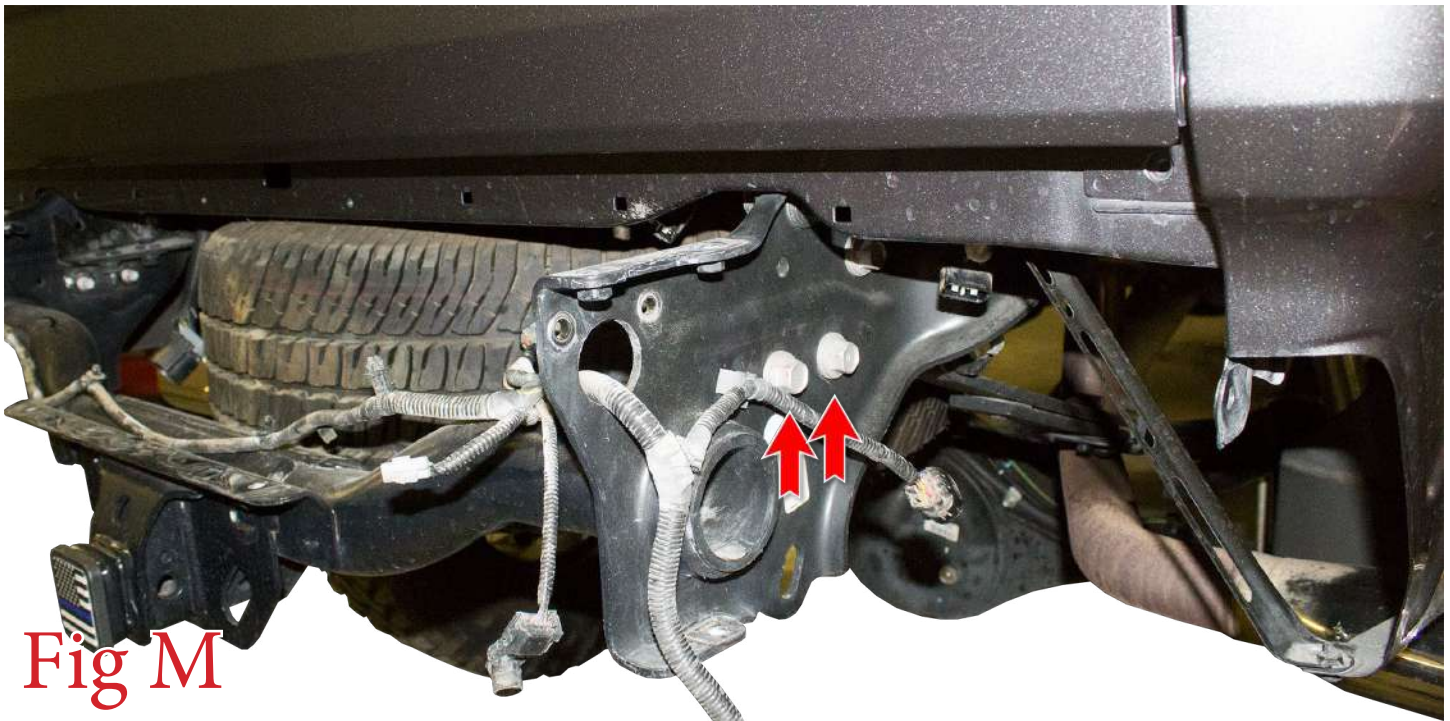
Push these tabs in to release the bumper



15. Remove the smaller square section of the license plate light housings by pressing in the tabs on the back side of the housings and pushing that section out of the front of the housing. (Fig L)



16. Using a 19mm Socket, remove the two hitch bolts (per side) referenced in (Fig M). Save these bolts for reuse.



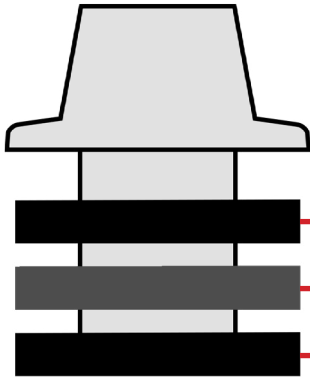
Installation:

17. Find the supplied Spacers (x4) and the supplied Bumper Mounting Brackets (x2). Install the bumper brackets onto the vehicle as shown in (Fig N) using the bolts you removed in Step 15. Be sure to mount the supplied Spacers (x4) between the bumper brackets and the vehicle's frame.

The spacers look like this



Install Hardware in this Order



- Bumper Bracket
- Supplied Spacer
- Vehicle's Frame

Fig N

18. Install the supplied U-Nuts (x4) onto your new bumper. (Fig O)

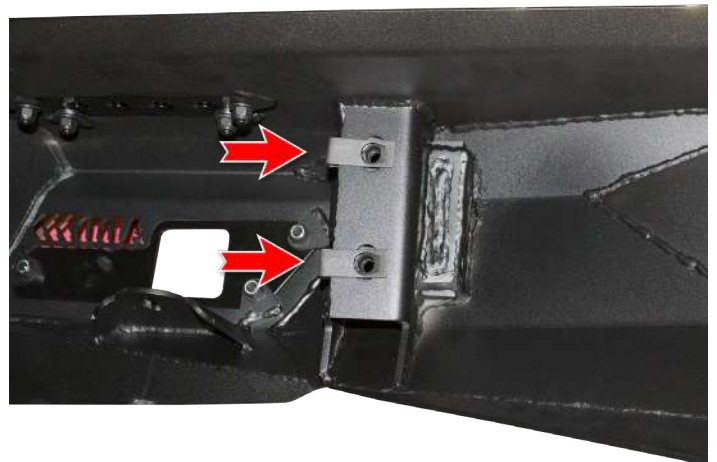
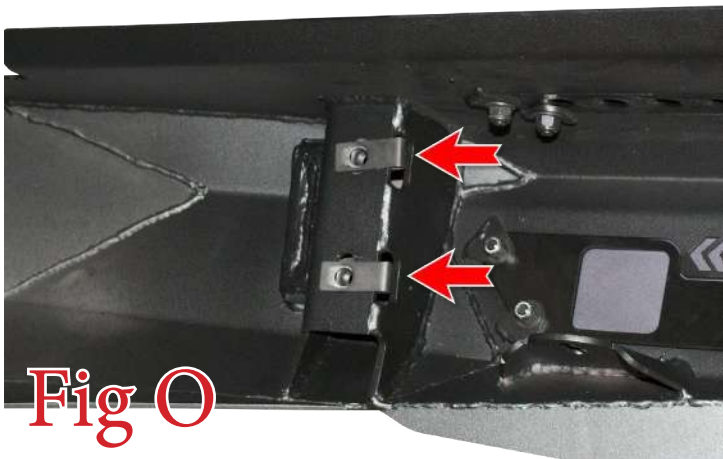
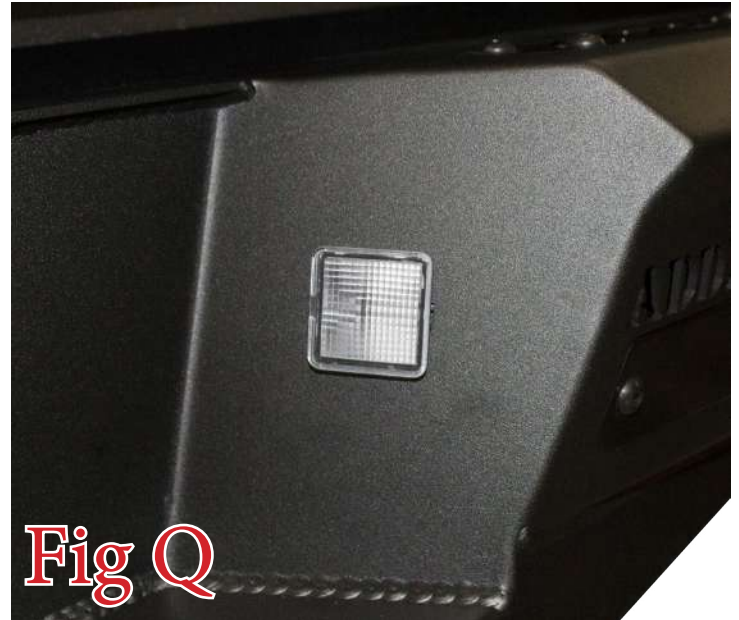


Fig O



19. Press the trailer plug into its precut hole on your new bumper. (Fig P)
20. Press the license plate housings into their precut hole on your new bumper. (Fig Q)



21. If you have any lights to install on your bumper, now is a good time to do so. Please follow the light manufacturer's installation guide for mounting/wiring information.
22. Install your parking sensors into your new bumper. Do this by first pressing the mounting ring in from the front side. Then, push the sensors into place from the back side. **Make sure to install your sensors in the same position/order as they came off your old bumper.** (Fig R)





23. Set the bumper in place on the vehicle. Use the supplied 3/8" Bolts (x4) and 3/8" Washers (x4) to secure it to the vehicle. Leave these bolts loose for now. (Fig S)



Fig S

- 24. Align your bumper so that it is centered left to right and straight in relation to the tailgate. Then, torque the four mounting bolts to 25 foot pounds.
- 25. Stand back and enjoy your new ADD Stealth Fighter™ Rear Bumper.
- 26. Check and re-tighten, if necessary, all mounting bolts after 100 miles and periodically thereafter.

