



Addictive Desert Designs

1999 – Current Ford SuperDuty HoneyBadger Rear Bumper Installation Instructions

PREPARATION

1. Disconnect the negative terminal on the battery. Park the vehicle on level ground and set the emergency brake.
2. We recommend reading through the installation instructions in whole before performing the work.
3. You will need the following tools:
 - a. 21mm Socket or Wrench
 - b. Ratchet

Note: this installation requires 2 people for best results

4. Included in Kit:

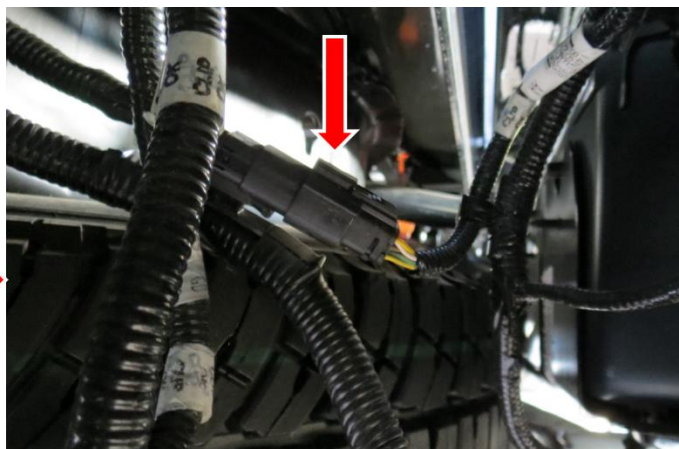
Reuse Stock Hardware

REMOVAL

1. Remove the license plate lights from their housings.
2. From the bottom of the truck, unplug the connector for the parking sensor harness. (Fig A)



Fig A



3. Remove the four 21mm bolts holding the bumper to the vehicle. There are two per side. (Fig B)

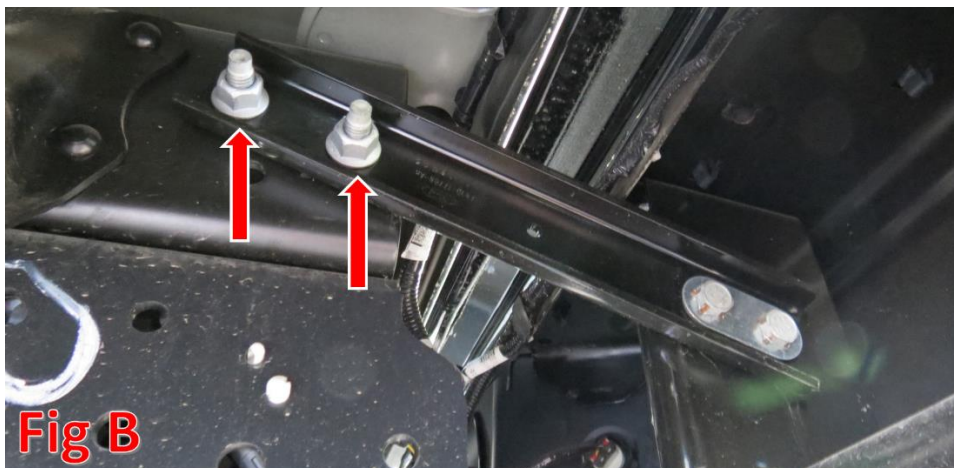


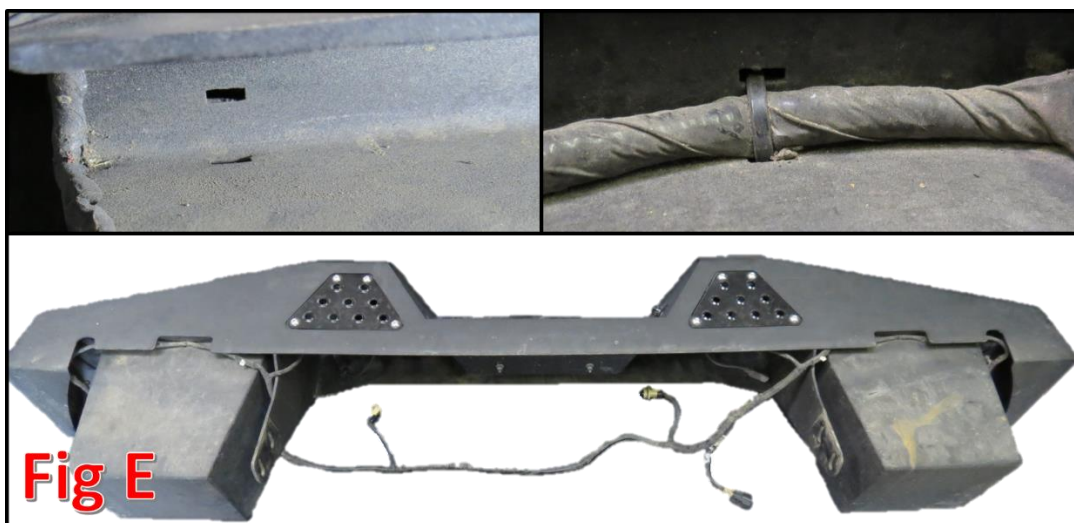
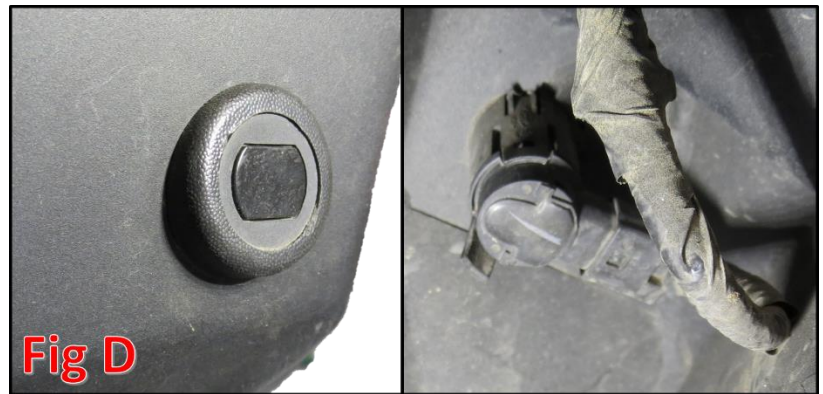
Fig B

4. Slide the OEM bumper off of the vehicle.
5. Remove the parking sensors with the harness still attached from the OEM bumper. To remove the sensors from the outer rings, simply push the two tabs on the back side of the outer ring outwards as you push the sensor out the back of the ring. (Fig C)
6. Remove the parking sensor outer rings from the OEM Bumper by pushing in the two tabs holding the outer rings to the bumper and pushing the outer rings out the front of the bumper.
7. Prepare to install your new A.D.D. Front Bumper.

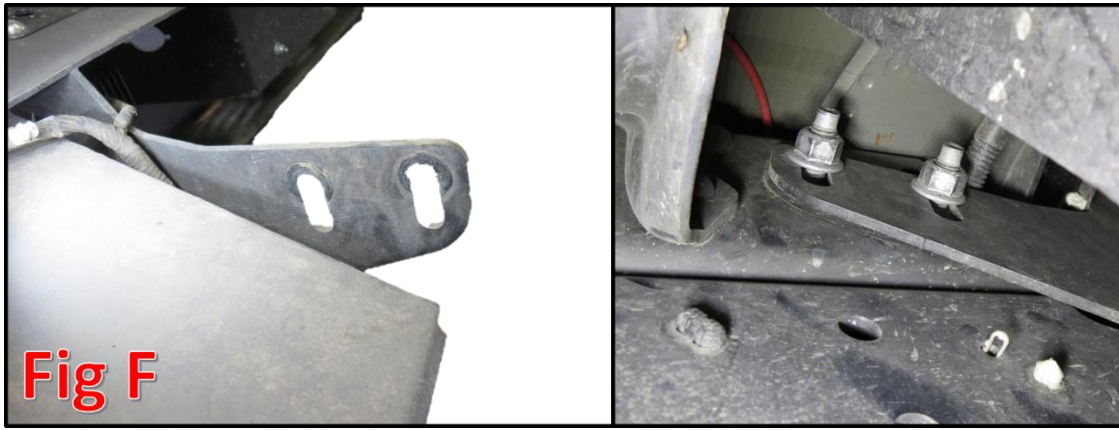


INSTALLATION

1. Install the parking sensor outer rings on your new A.D.D. bumper.
2. Install the parking sensors/harness on your new bumper.
 - a. Push the sensors into the outer rings from the back side. (Fig D)
 - b. Use zip ties to hold the harness in place. There are cutouts on the bumper that are meant to be used as zip tie locations. (Fig E)



3. If you purchased any lights for your bumper, now is a good time to install those. Please refer to the light manufacturer's instructions for mounting and wiring information.
4. Position the bumper so that the mounting holes on the bumper tabs line up with the holes the OEM bumper was mounted to. Use the bolts you took out in removal Step 3 (x4) to hold it in place. Leave the bolts loose for now.



5. Align the bumper so that it is straight in relation to the bottom of tailgate. Also make sure it is centered from left to right. Tighten the mounting bolts to manufacturer's specifications.
6. Plug in the parking sensor harness connector that you unplugged in removal Step 2.
7. Install the license plate light housings on the new bumper by simply pushing them into their precut holes. (Fig G)
8. Install the license plate lights into their housings.
9. Install spare tire lock by turning the key to the unlocked position, pushing the lock into its hole, then turning the key to the locked position.
10. Stand back and enjoy your new A.D.D. HoneyBadger Rear Bumper.
11. Check and re-tighten if needed, all mounting bolts after 100 miles and periodically thereafter.

