



Preparation:

- Disconnect the negative battery terminal. Park the vehicle on level ground and set the emergency brake.
- We recommend reading through the installation instructions in whole before performing the work.
- Estimated Installation Time: **2 Hours**

*****This installation requires 2 people for best results*****

You will need the following tools:

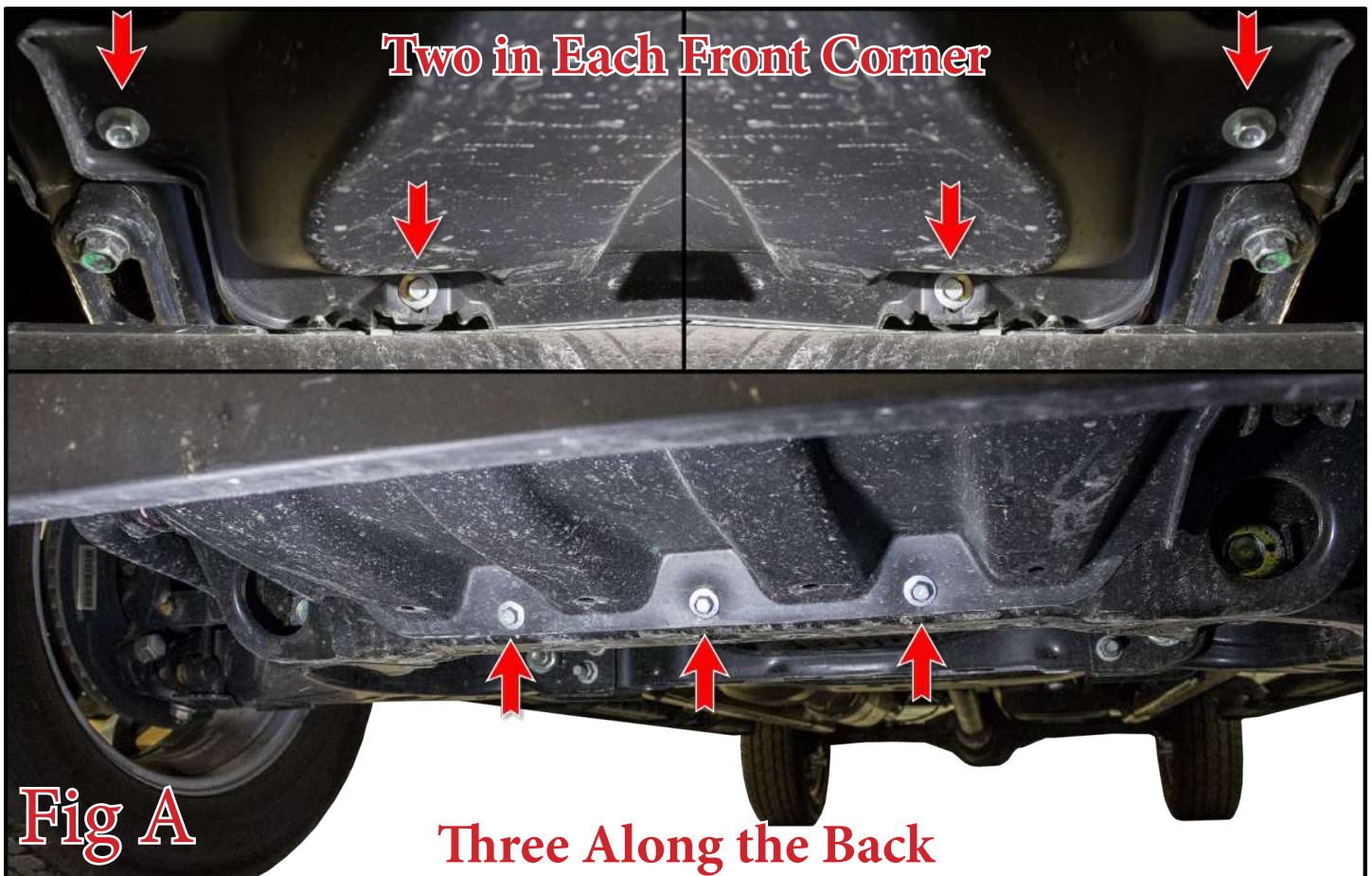
- Ratchet
- 12mm Socket
- 17mm Socket
- 14mm Socket

Included in Kit:

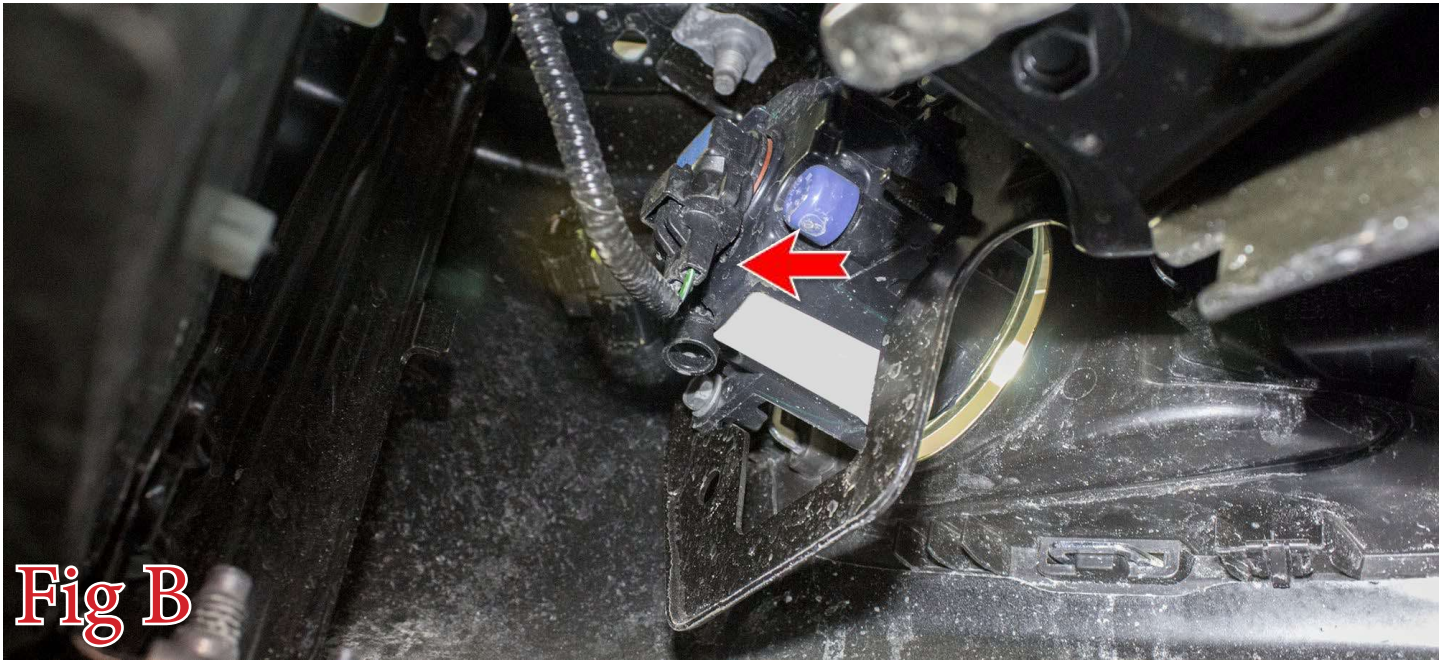
Reuse Stock Hardware

Removal:

1. Use a 12mm Socket to remove the OEM Skid Plate mounting bolts (x7). Then, remove the skid plate. **Save two of these bolts for reuse.** (Fig A)



2. Disconnect the connectors on the back side of the fog lights. (Fig B)



3. Unplug the main harness connector for the front parking sensors. This connector is right next to the passenger side fog light. (Fig C)





4. Use a 12mm Socket to remove the mounting bolts (2 per side) for the bumper side supports. This picture was taken looking into the wheel well. (Fig D)

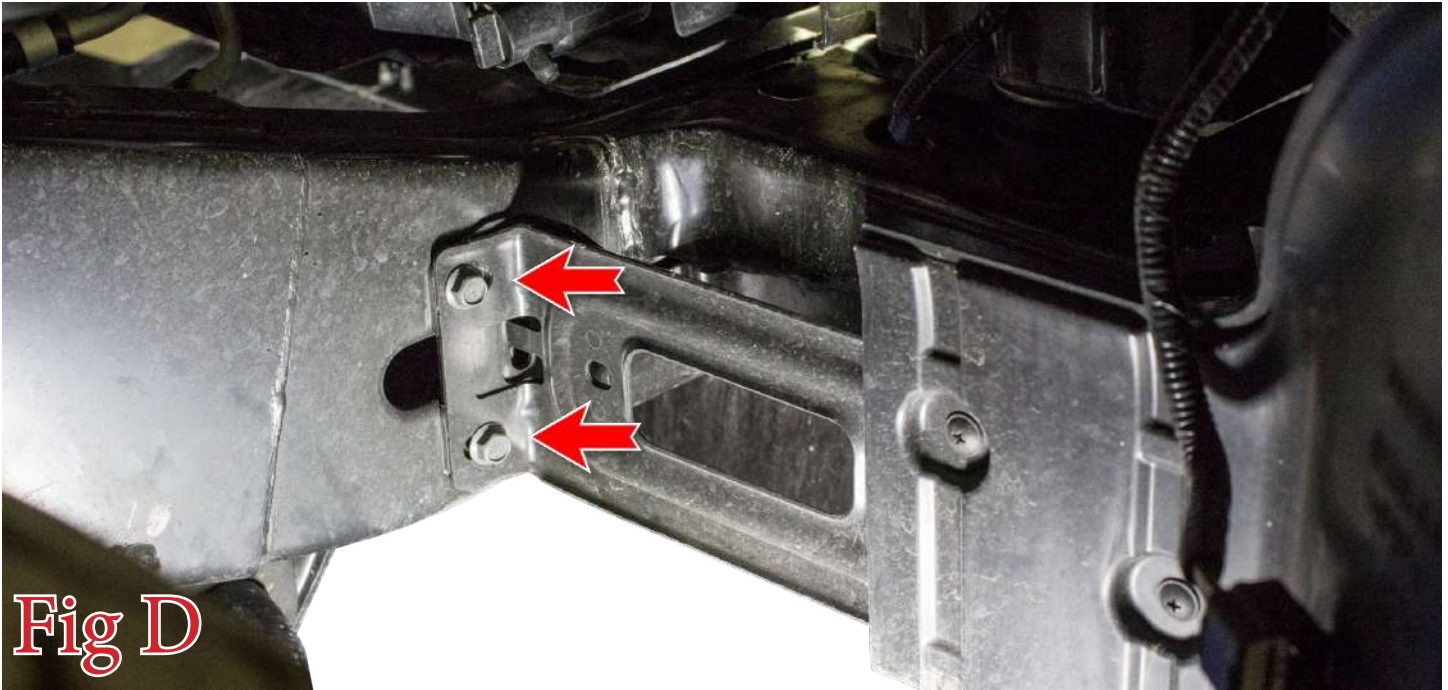


Fig D

5. Use a 17mm Socket to remove the tow hook mounting bolts (2 per hook). Then, remove the tow hooks. (Fig E)

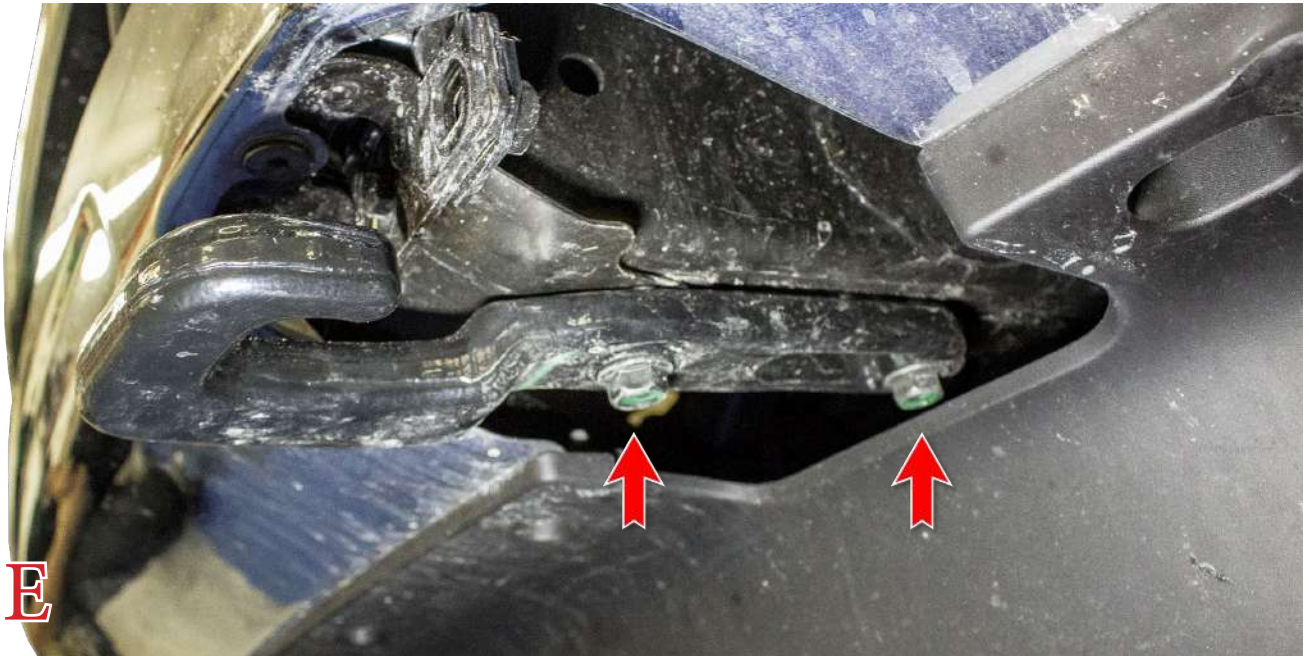


Fig E



6. Pull off the two front plastic covers that hide the bumper mounting bolts. There are no tools required for this step, they simply pull off by hand. (Fig F)



7. Use a 14mm Socket to remove the upper bumper mounting bolts (2 per side). (Fig G)





8. Underneath the truck, there are two frame extensions towards the front end of the vehicle. Remove the two bumper mounting bolts on these extensions. (Fig H)



9. On the lower section of the front of the bumper there is one more plastic piece (per side) that needs to be removed. Remove the plastic clip and 10mm Bolt (per side) that hold it on. Then, remove that piece. (Fig I)

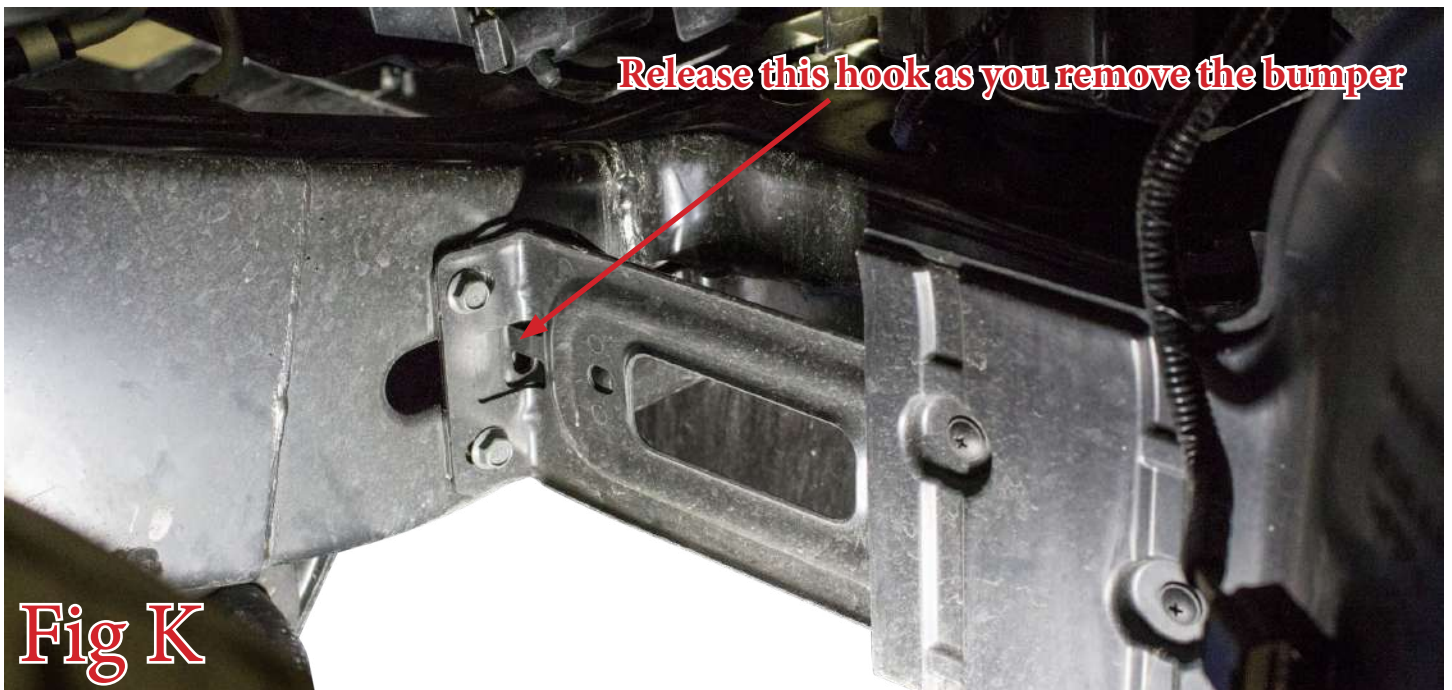




10. Using a 14mm Socket, remove the bolt behind each plastic panel you just removed. (Fig J)



11. Pull the front bumper off the truck. There is a small hook where each bumper side support meets the frame. Make sure this is released as you take the bumper off. This step is better performed by two people. (Fig K)





12. Use a 14mm Socket to remove the front bumper bracket mounting bolts (3 per side). Then, remove these brackets. **Save these bolts for reuse.** (Fig L)



Fig L

13. Using a 17mm Socket, remove the bolt (1 per side) that sits just behind the bumper brackets that were removed in the last step. **Save these bolts for reuse.** (Fig M)

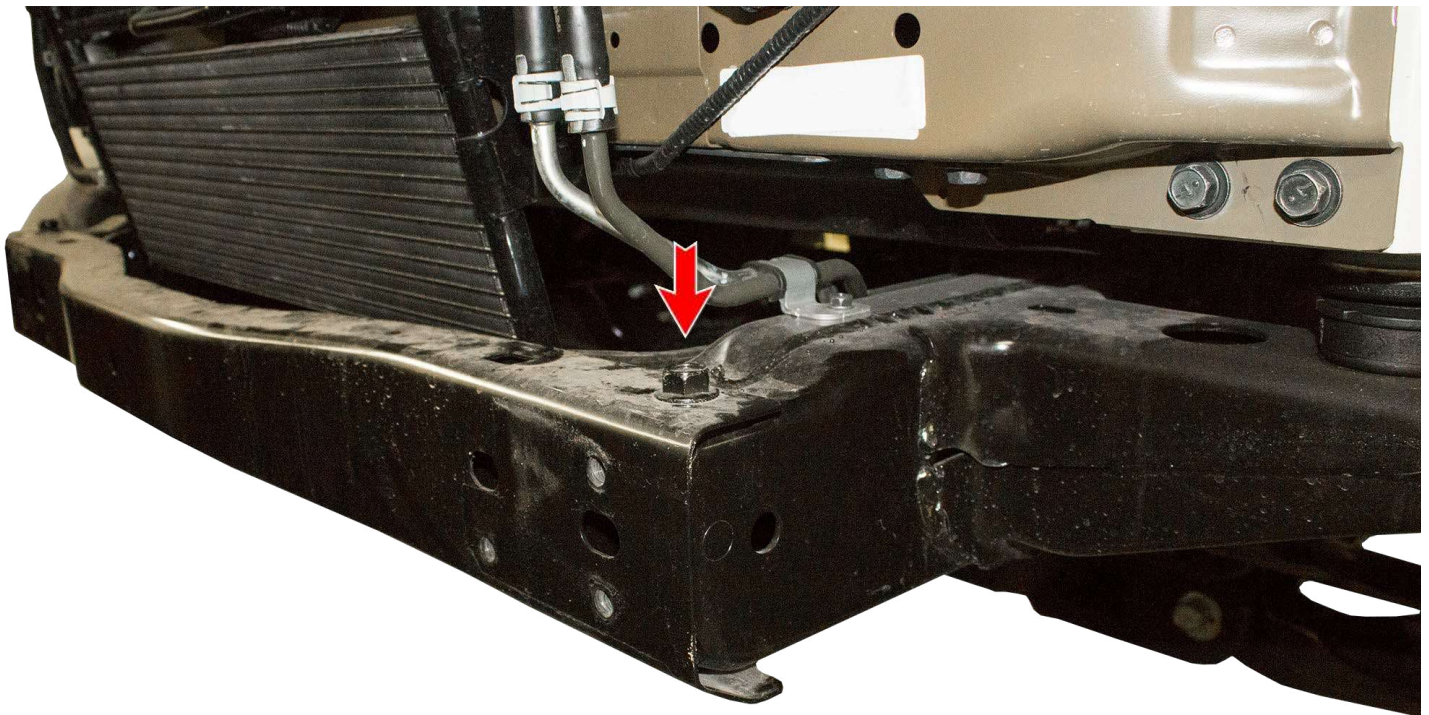
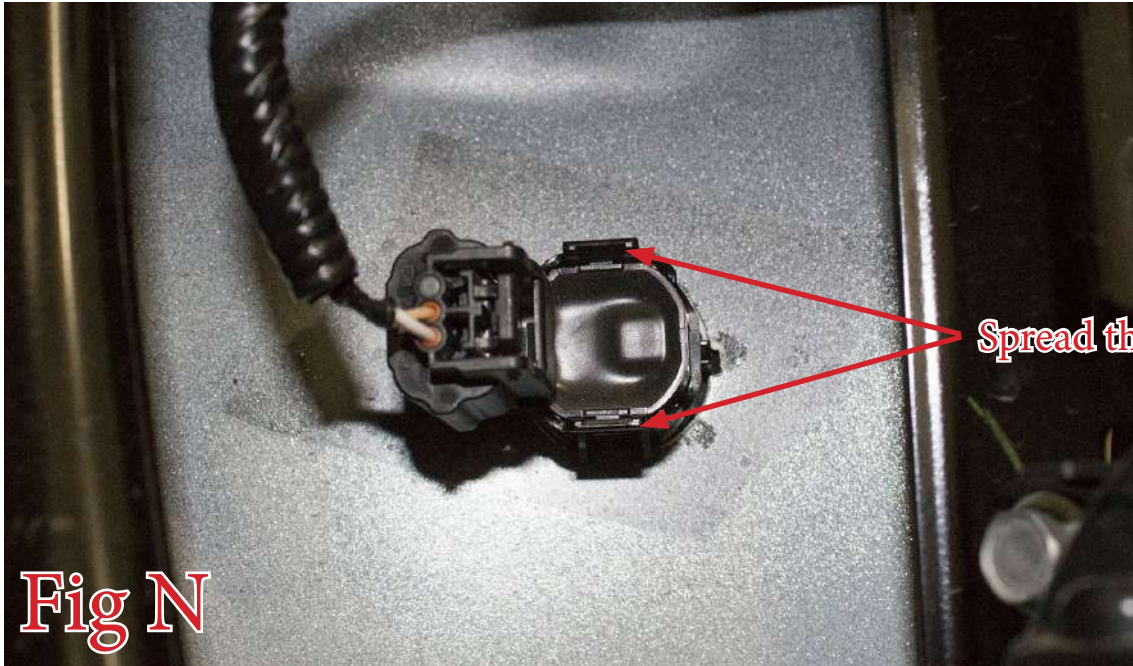


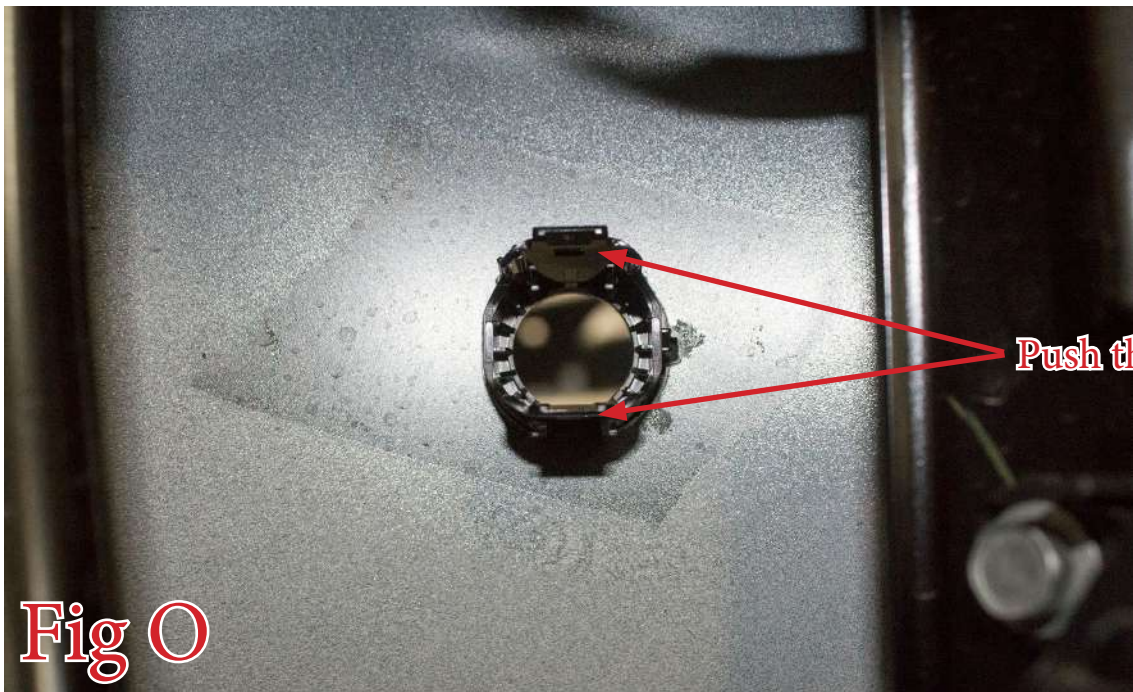
Fig M



14. Remove the OEM parking sensors from the OEM front bumper. Do this by spreading the two tabs on the sensor mounting ring and pushing the sensor out the rear of the bumper. **Make sure to keep track of the position/order these sensors came out of the bumper so you can reinstall them in the same position/order.** (Fig N)

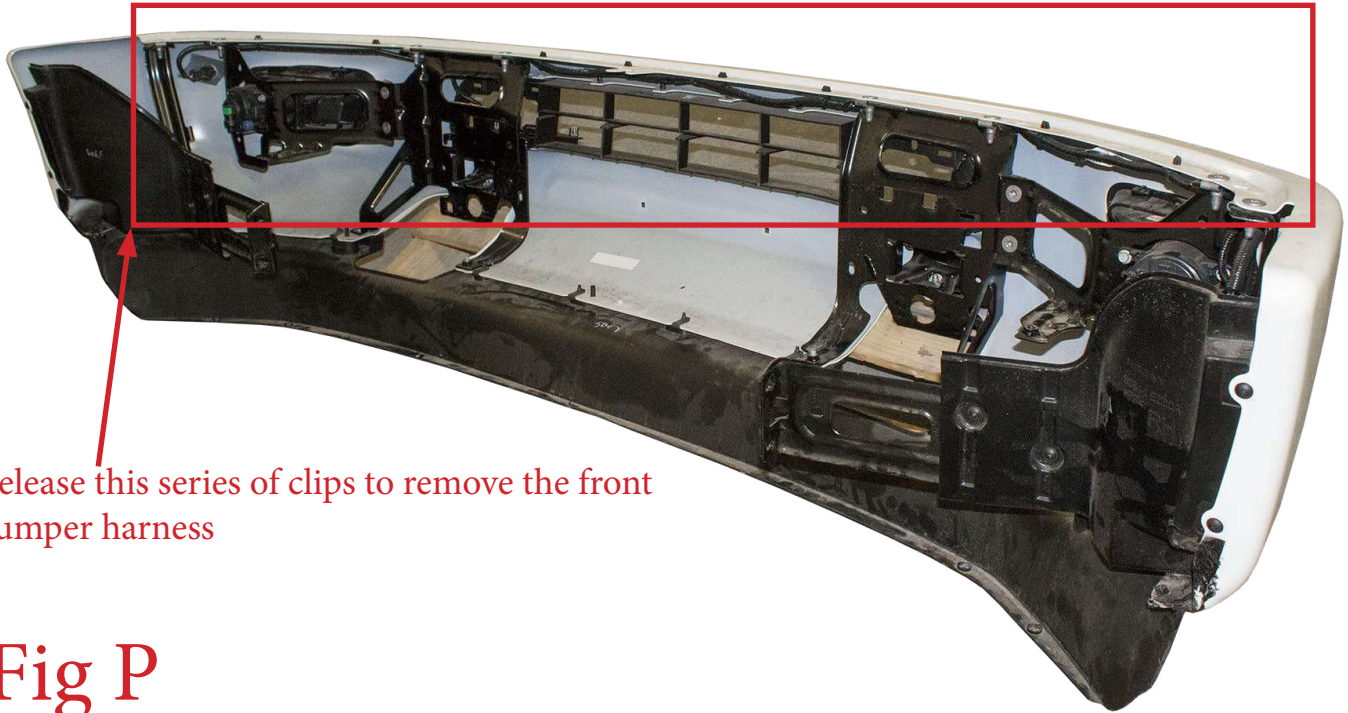


15. Remove the OEM parking sensor mounting rings by pushing in the two tabs on the back side of the ring and pushing the ring out the front side of the bumper. **Make sure to keep track of the position/order these rings came out of the bumper so you can reinstall them in the same position/order.** (Fig O)





16. Remove the parking sensor harness from the OEM bumper by releasing the series of clips holding it in place. (Fig P)



Release this series of clips to remove the front bumper harness

Fig P

Installation:

17. Trim back the tabs on the parking sensor mounting rings until they properly click into place on your new bumper. Go a little bit at a time so you don't trim too far. Install the parking sensor mounting rings in the same position/order as they came off the OEM bumper. (Fig Q)

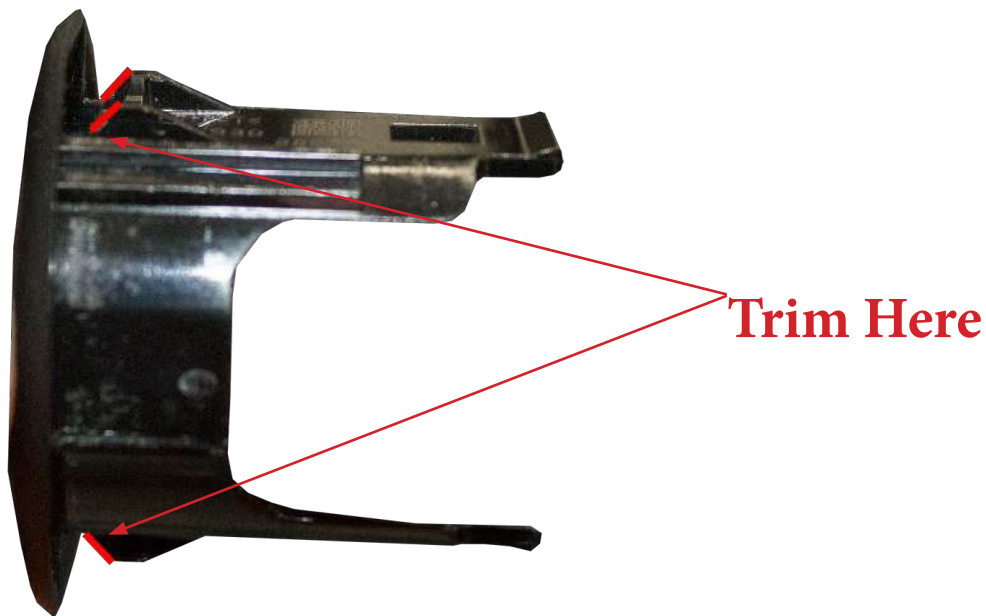


Fig Q



18. Install the parking sensors (along with the harness) into your new bumper by pressing the sensors into the mounting rings from the back side. (Fig R)



Fig R

19. If you have any lights to install on your bumper, now is a good time to do so. Please follow the light manufacturer's guide for mounting/wiring information.

20. Set the bumper in place on the vehicle. Secure the bumper to the vehicle by installing the bolts (x6) that were saved in Step 12 in the upper bumper mounting holes. Then, install the bolts that were saved in Step 13 in the lower bumper mounting holes. Leave these bolts loose for now. (Fig S)

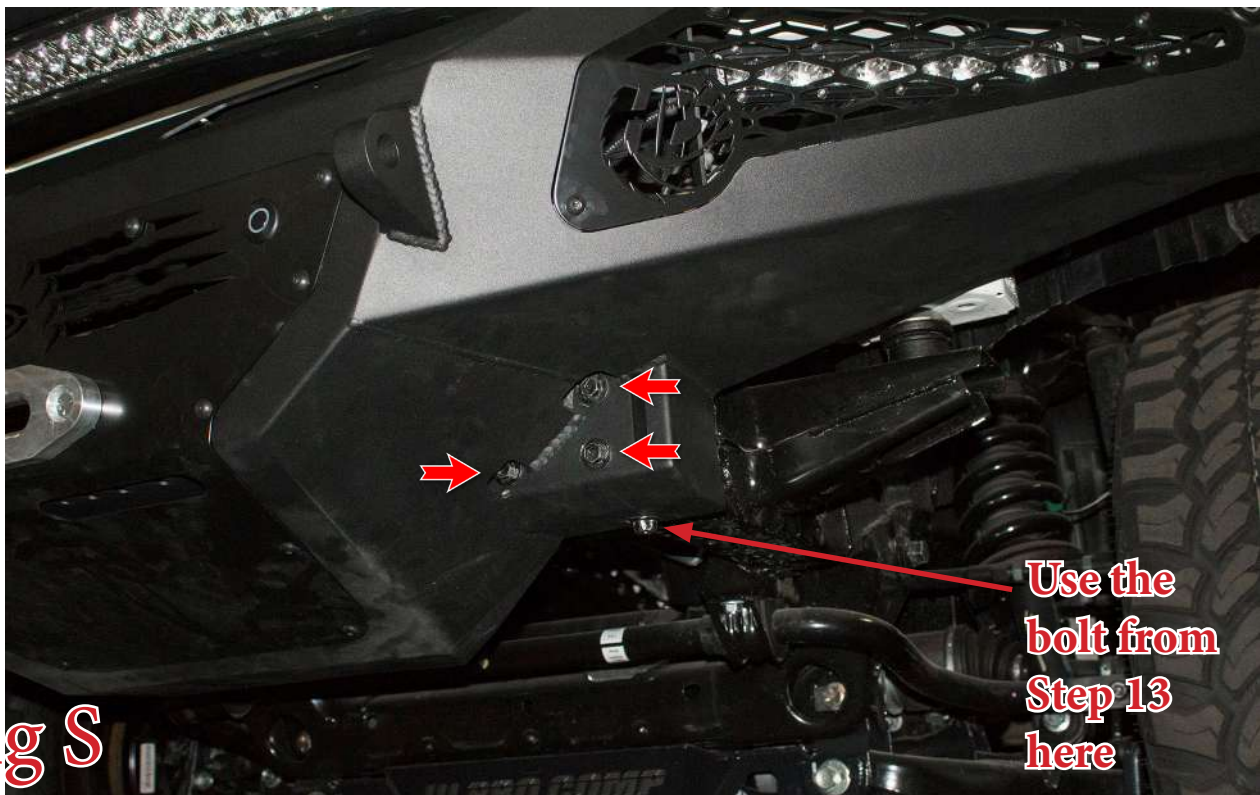


Fig S



21. Align the bumper so that it is centered left to right and also straight in relation to the grille/headlights. Then, go back and torque the bumper mounting bolts to OEM torque spec.
22. Using a utility knife, or something similar, trim the inner fender liners to preference. We suggest following a line similar to what is shown in (Fig T).

Before



After



Fig T

23. Stand back and enjoy your new ADD HoneyBadger® Front Bumper.
24. Check and re-tighten, if needed, all mounting bolts after 100 miles and periodically thereafter.

