

## Preparation:

- Disconnect the negative battery terminal. Park the vehicle on level ground and set the emergency brake.
- We recommend reading through the installation instructions in whole before performing the work.
- When button head bolts are being used, install the supplied washer on the nut side. Then, hold the bolt stationary and only turn the nut to tighten. Do not turn the bolt to tighten hardware assembly, unless otherwise noted.
- Estimated Installation Time: **2 Hours for OEM Removal/Bumper Installation**

**1 Additional Hour to Wire Center Lights**

**1 Additional Hour to Wire Side Lights**

**\*\*This installation requires 2 people for best results\*\***

**\*\*Labor Rates are based on a vehicle with no pre-existing damage. Wiring labor is based on a standard wiring procedure with light switches installed in an easily accessible location. Custom light triggering or switch mounting location will result in a greater labor charge.\*\***

## You will need the following tools:

- |                             |                             |                         |
|-----------------------------|-----------------------------|-------------------------|
| - Ratchet                   | - 10mm Socket               | - 18mm Socket & Wrench  |
| - 15/16" Socket             | - 3/4" Socket & Wrench      | - 9/16" Socket & Wrench |
| - 7/32" Allen Wrench/Socket | - 5/16" Allen Wrench/Socket | - Utility Knife         |

## Included in Kit:

- |  |  |
|--|--|
| <b>4</b> - Grade 8 Hex Head Bolts (1/2"-20 x 3 1/2") | <b>8</b> - Grade 8 Washers (1/2")        |
| <b>4</b> - Metal Lock Nuts (1/2"-20)                 | <b>2</b> - Bumper Mounting Brackets      |
| <b>2</b> - Button Head Bolts (1/2"-13 x 1 1/2")      | <b>2</b> - Flat Washers (1/2")           |
| <b>2</b> - Nylon Lock Nuts (1/2"-13)                 | <b>4</b> - Hex Head Bolts (3/8"-16 x 1") |
| <b>4</b> - Flat Washers (3/8")                       | <b>4</b> - U-Nuts (3/8"-16)              |

## Also Included in Kit for Dual 20" Bumpers Only:

- |                                |   |
|--------------------------------|---|
| <b>2</b> - Light Mounting Tabs | <b>4</b> - Button Head Bolts (3/8"-16 x 1") |
| <b>4</b> - Flat Washers (3/8") | <b>4</b> - Nylon Lock Nuts (3/8"-16)        |

**Removal:**

1. Underneath the truck on the driver side, unplug the main bumper harness connector. (Fig A)



**Fig A**

2. Remove the tow hooks from the vehicle. There are 2 mounting bolts (per side) along the vehicle's frame horn. These can be accessed from underneath the vehicle. Use a 15/16" Socket to remove both of these bolts. Then, pull the tow hooks out the front of the bumper. (Fig B)



**Fig B**



3. Use an 18mm Socket & Wrench to remove the two bumper mounting bolts (per side). Then, remove the OEM bumper from the vehicle. (Fig C) **Save these bolts for reuse.**

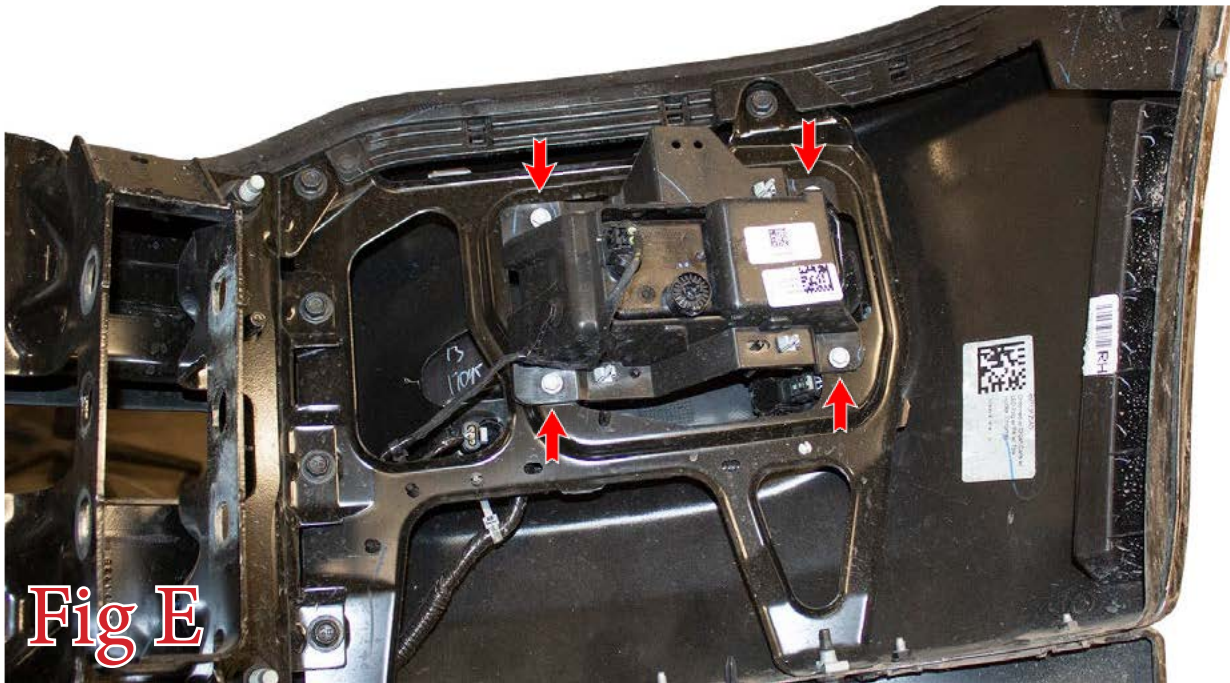


4. Use a 10mm Socket to remove the intercooler scoop mounting bolts (x4). Then, remove the three plastic clips along the bottom of the intercooler scoop and remove the scoop from the vehicle. (Fig D)





5. Set the OEM bumper on a workbench or something similar. Use a 10mm Socket to remove the four bolts holding on each fog light. (Fig E)

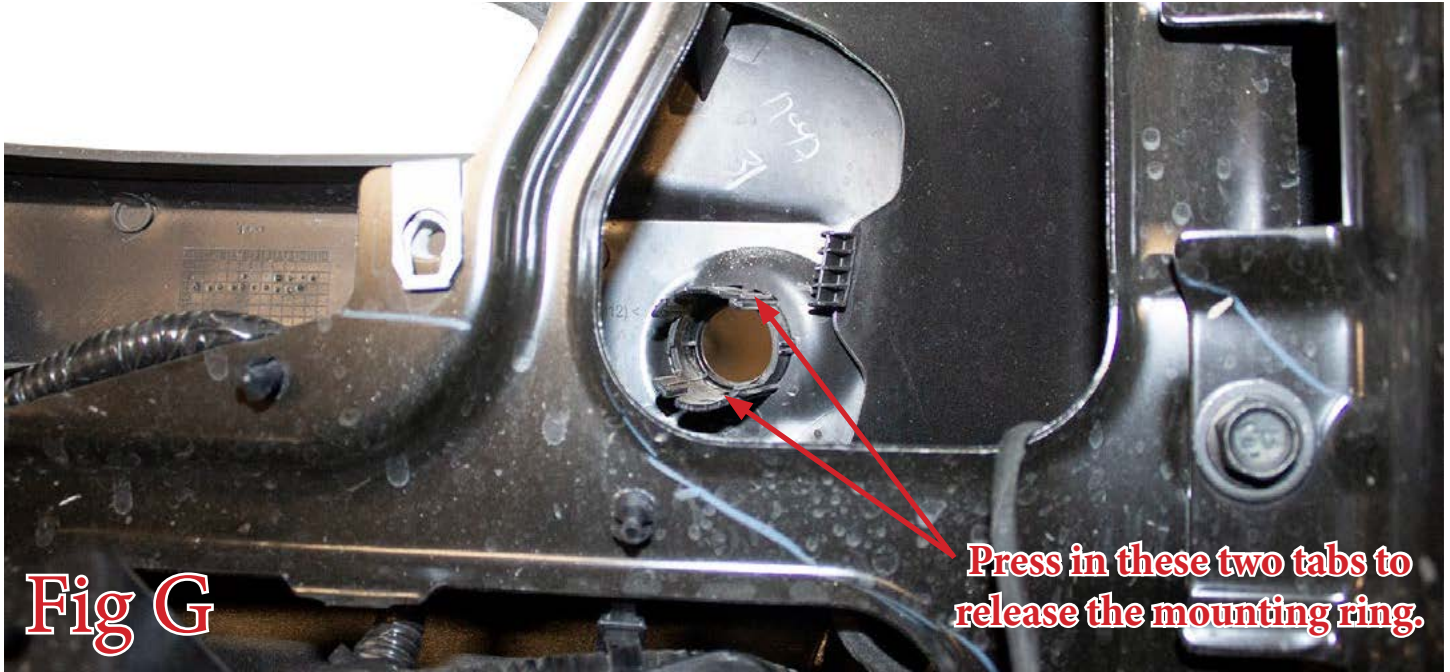


6. Remove the OEM parking sensors from their mounting rings. Do this by spreading the two tabs on the back side of the mounting rings. Then, push the sensors out the back side of the rings. (Fig F) **Make sure to keep track of the position/orientation that the parking sensors come off the OEM bumper so that they can be installed on your new bumper in the same position/orientation.**

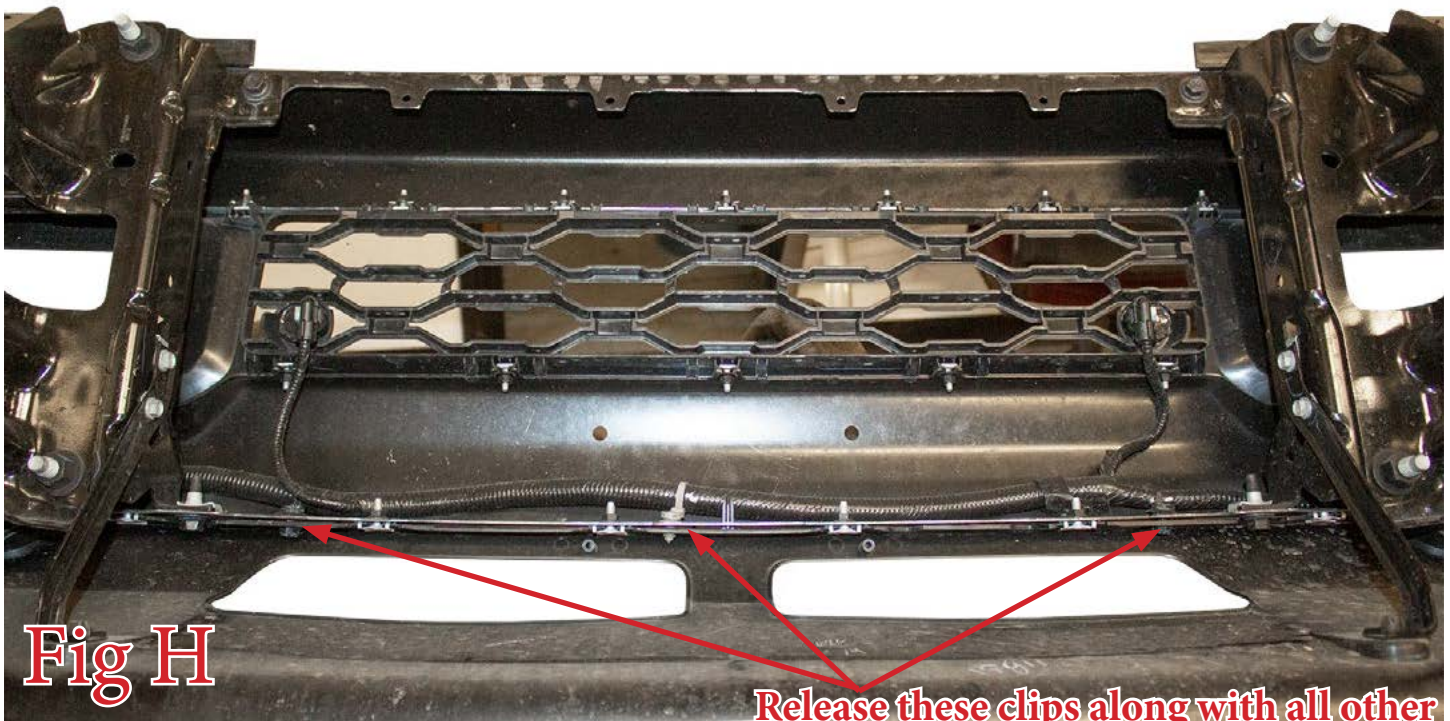




7. Remove parking sensor mounting rings from the OEM bumper. Do this by pressing in the two tabs along the bottom of the back side of the mounting rings. (Fig G) **Make sure to keep track of the position/orientation that the mounting rings come off the OEM bumper so that they can be installed on your new bumper in the same position/orientation.**



8. Release the series of plastic clips holding on the OEM bumper harness. Then, remove this wiring harness from the OEM bumper. (Fig H)



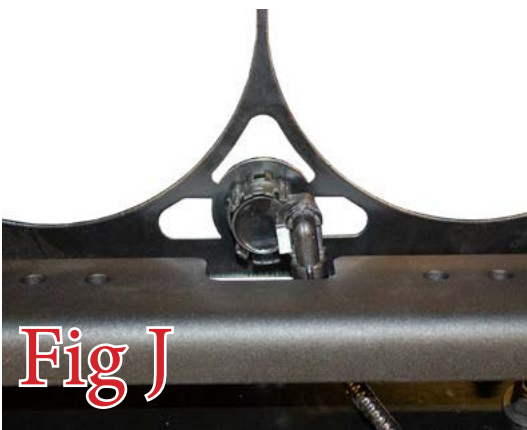
## Installation:

9. Install the parking sensor mounting rings onto your new bumper. Install them by pressing them into their precut holes on the new bumper. **Install them in the same position/orientation as they came off the OEM bumper.** (Fig I)



**Fig I**

10. Move the bumper harness/parking sensors over to your new bumper. Press the parking sensors into their mounting rings from the back side. As you are installing the parking sensors, make sure to run the harness so that it will be out of harm's way when the bumper is installed. Also make sure the main harness connector is on the proper side. Lastly, install the parking sensors in the exact orientation as they came off the OEM bumper. (Fig J)

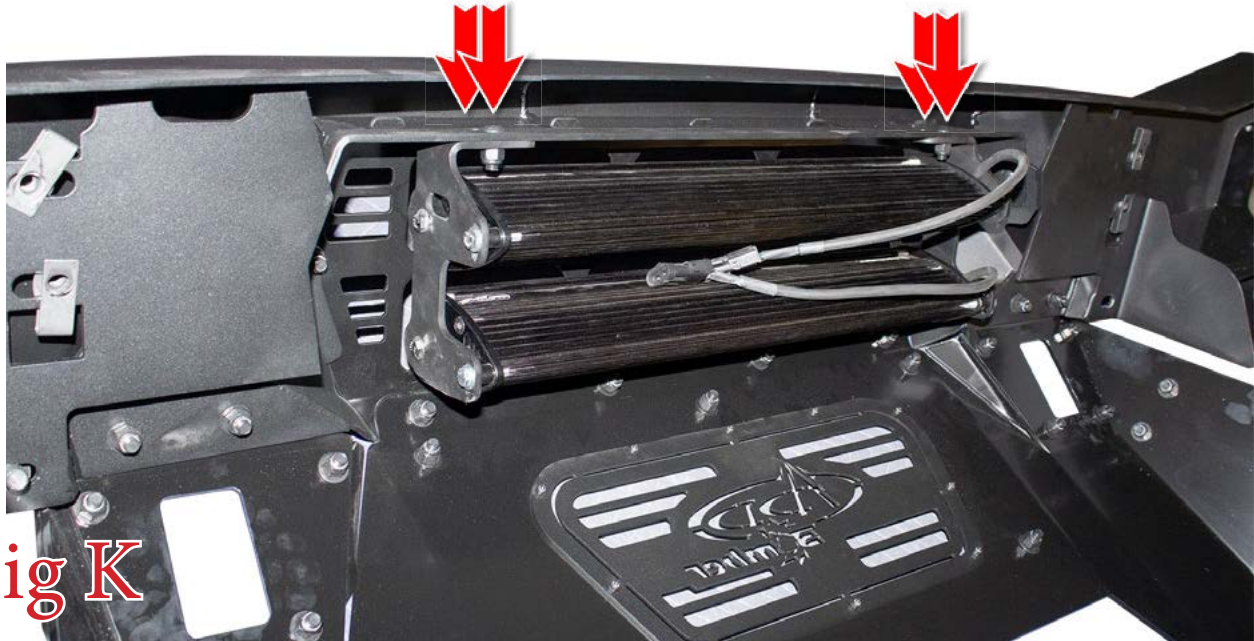


**Fig J**





11. If you have the dual 20" light bar version of this bumper, follow this step. If not, skip this step. Use the supplied 3/8" Button Bolts (x4), 3/8" Washers (x4), and 3/8" Lock Nuts (x4) to loosely install the onto the bumper. Then, install the light bars using the hardware supplied by the light manufacturer. Once all bolts are loosely installed, tighten the light manufacturer's hardware to their torque spec. Tighten the 3/8" Button Head Bolts to 30 foot pounds. The final product will look like (Fig K).



12. If you have the Baja LP6 version of this bumper, follow the next 3 steps. If not, skip to Step 15. Remove the 6 bolts that hold the light bracket to the bumper. Then, remove this bracket from the bumper. (Fig L)



13. Install your Baja LP6 lights using the light manufacturer's mounting hardware. (Fig M)



**Fig M**

14. Reinstall your light bracket onto the bumper by reversing Step 12.

15. If you have the Rigid 360 Series version of this bumper, you can install your lights onto the bumper without removing the light bracket. You may also install your cube lights onto the side pods of your bumper at this time.

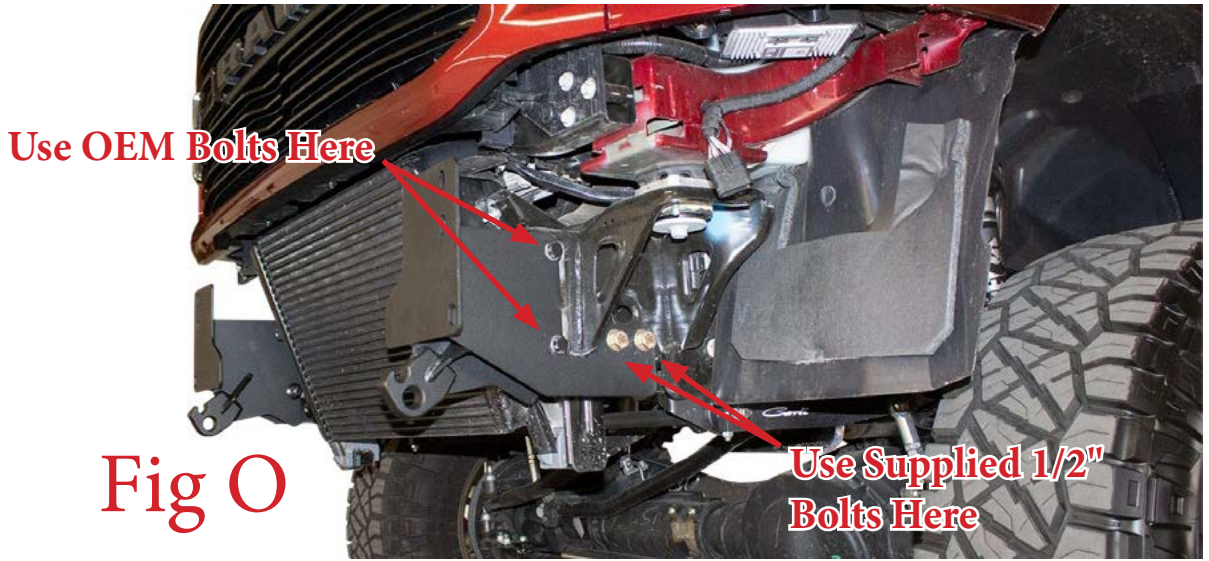
16. Install the supplied U-Nuts (x4) onto your bumper as shown in (Fig N).



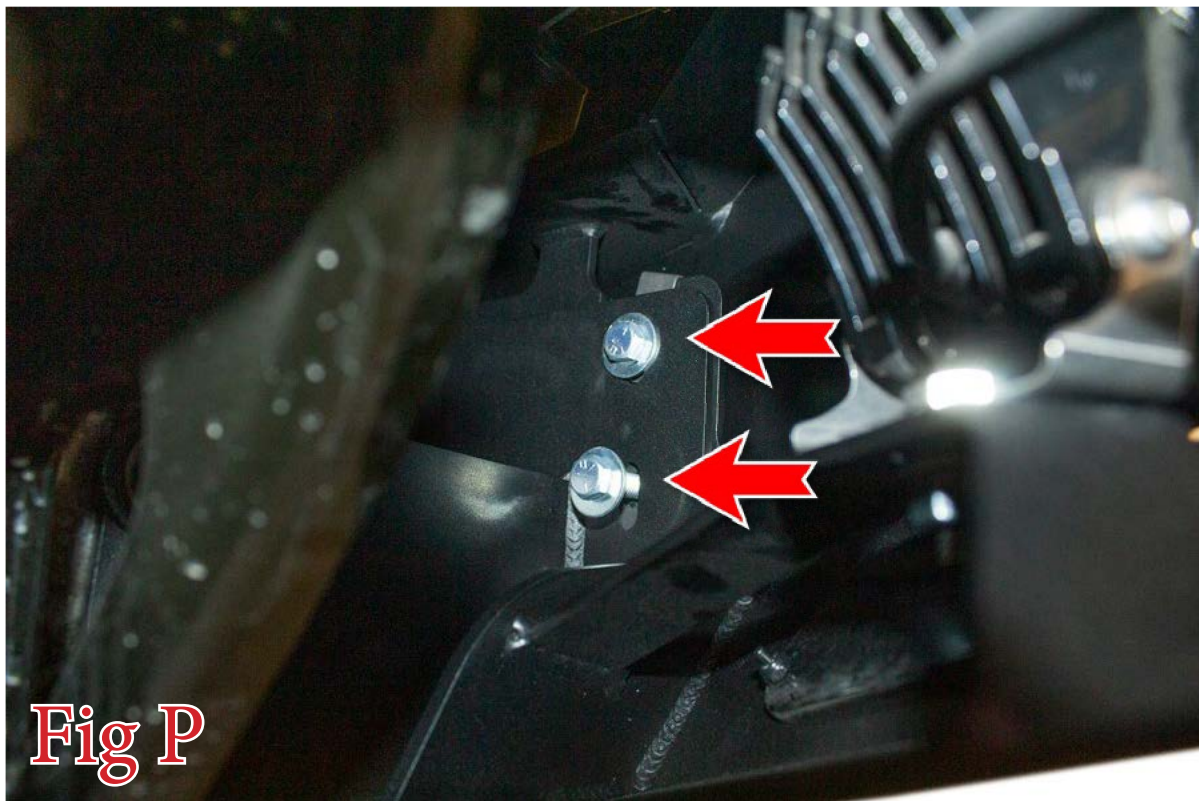
**Fig N**



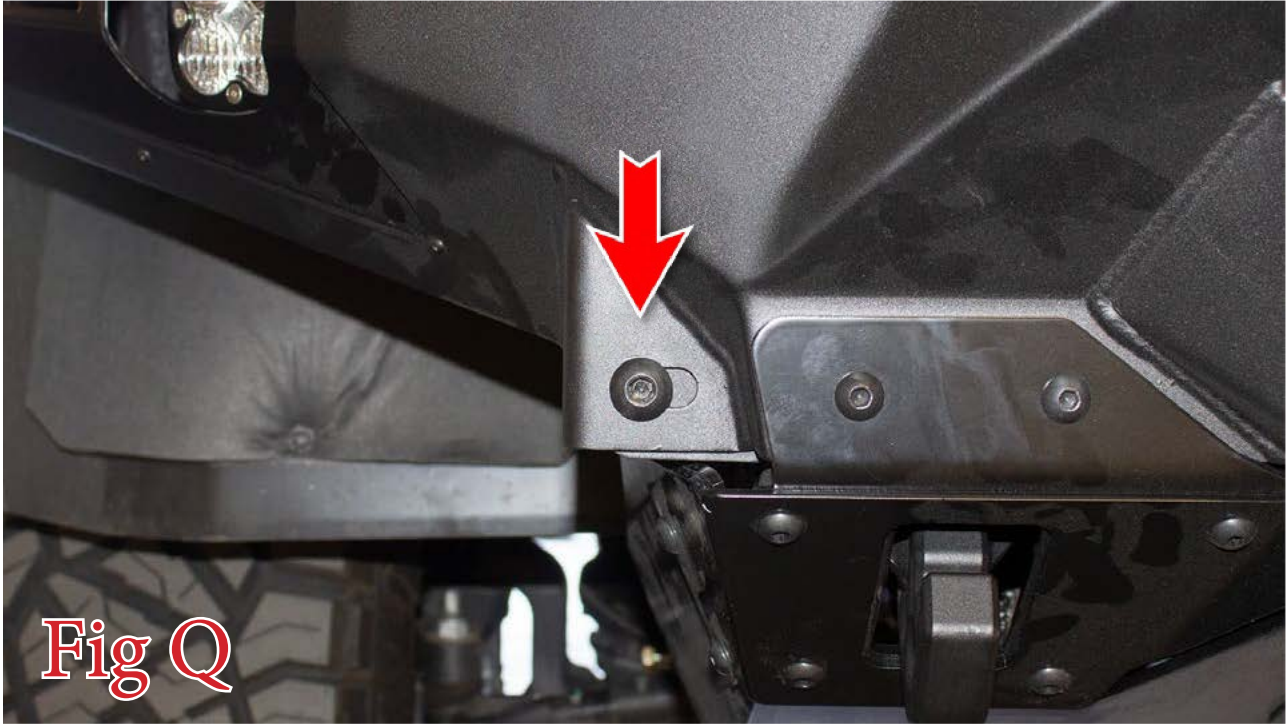
17. Install the supplied Bumper Mounting Brackets. Use the supplied 1/2" Grade 8 Bolts in the bottom 2 holes (per mount). Use the OEM bolts from Step 3 in the remaining mounting holes. (Fig O) Tighten the OEM bolts to OEM torque spec. Tighten the 1/2" Mounting Bolts to 80 foot pounds.



18. Set the bumper in place on the vehicle. Then, loosely install the supplied 3/8" Hex Head Bolts (2 per side) and 3/8" Washers (2 per side) from the back side of the vehicle's frame horns. (Fig P)



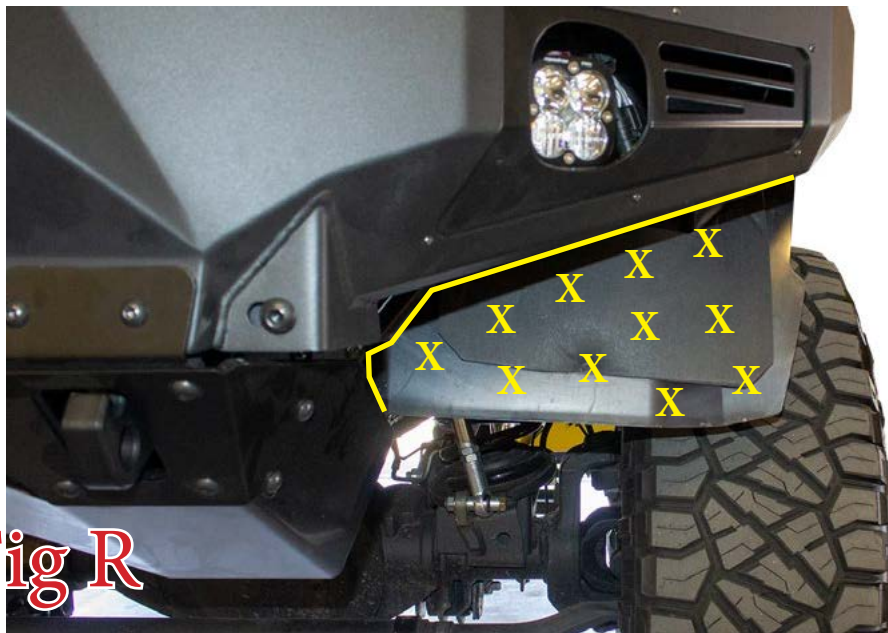
19. Use a 5/16" Allen Wrench/Socket and a 3/4" Wrench to install the supplied 1/2" Button Head Bolts (1 per side), 1/2" Washers (1 per side), and 1/2" Lock Nuts (1 per side) into the lower bumper mounting holes. **Leave these bolts loose for now.** (Fig Q)



**Fig Q**

20. Center your bumper left to right. Then, align it so it is straight in relation to the grille/valance. Then, go back and tighten the bolts from Step 18 to 25 foot pounds and the bolts from Step 19 to 70 foot pounds.

21. Use a utility knife or something similar to trim your inner fender liners to preference. (Fig R)



**Fig R**



22. Stand back and enjoy your new Bomber™ Front Bumper.
23. Check and re-tighten, if needed, all mounting bolts after 100 miles and periodically thereafter.



22. Stand back and enjoy your new Bomber™ Front Bumper.
23. Check and re-tighten, if needed, all mounting bolts after 100 miles and periodically thereafter.

