



# ADDICTIVE DESERT DESIGNS

## 2009 – Current Ram 1500 ADD Lite Front Bumper Installation Instructions

### PREPARATION

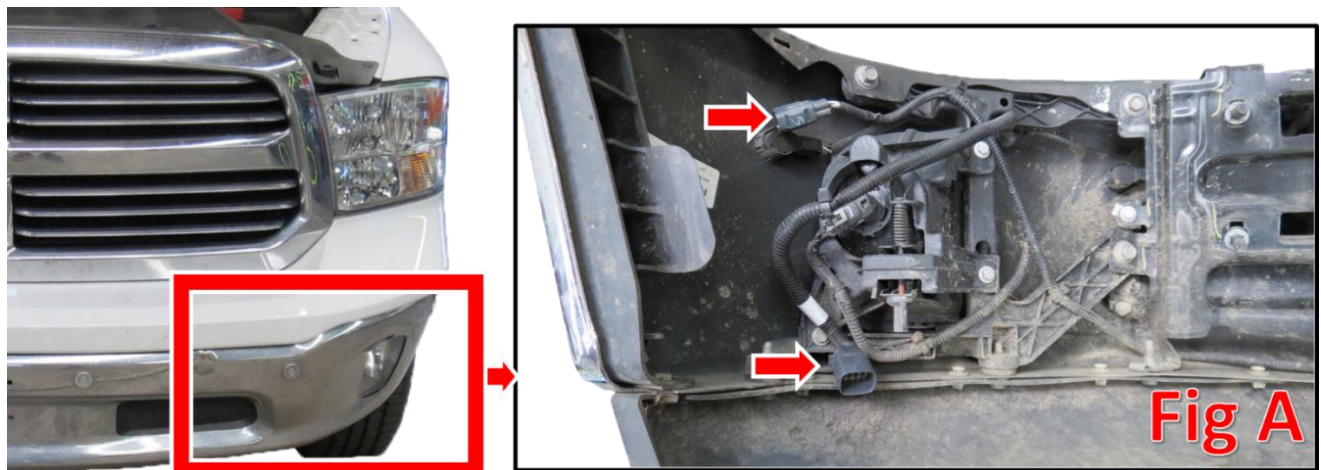
1. Disconnect the negative terminal on the battery. Park the vehicle on level ground and set the emergency brake.
2. We recommend reading through the installation instructions in whole before performing the work.
3. Estimated Installation Time: **2 Hours**
4. You will need the following tools:
  - a. 18mm Socket
  - b. Ratchet
  - c. 3/4" Socket and Wrench
  - d. Utility Knife
  - e. 1/2" Drill Bit (Optional)
  - f. Drill (Optional)

*Note: this installation requires 2 people for best results*

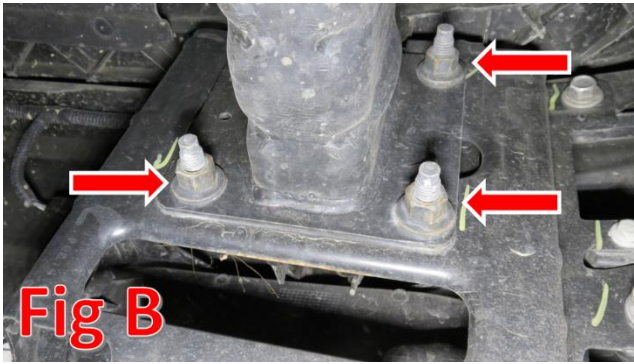
5. Included in Kit:
  - 8** – Hex Head Bolts – 1/2"-13 x 1 1/2"
  - 16** – Flat Washers – 1/2"
  - 8** – Nylon Locking Nuts – 1/2"-13

### REMOVAL

1. From underneath the front driver side of the vehicle, unplug the main fog light and parking sensor harnesses. (Fig A)



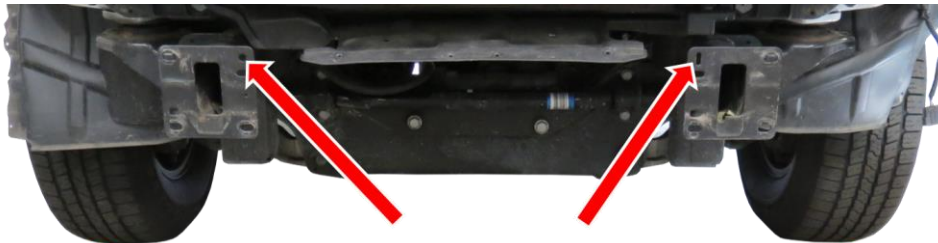
2. From underneath the truck, remove the 18mm nuts holding the bumper to the frame rails. There are 3 nuts per side, 6 total. Then, remove the lower portion of the bumper. (Fig B)



3. Prepare to install your new ADD Lite Front Bumper.

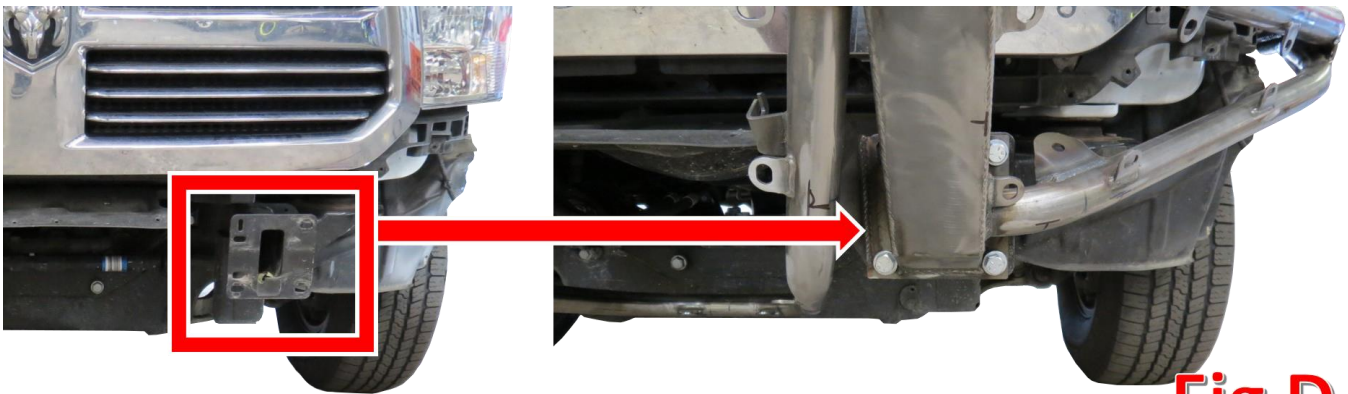
## INSTALLATION

1. If you have any lights you would like to install on your bumper, now would be a good time to do that. Please follow the light manufacturer's guides for mounting and wiring information.
2. THIS STEP IS OPTIONAL. The top/inner bolt holes on each frame horn are not quite 1/2" in diameter. You have the option to drill both of these holes out to 1/2". We have provided the extra hardware to use these holes when mounting your bumper, however, this step is completely optional. If you do drill these holes out, we recommend mounting the bumper with the remaining 6 bolts, marking out the areas to be drilled out, then removing the bumper and drilling out the holes. (Fig C)



**Fig C** You may drill these two holes to 1/2"

3. Line the mounting holes on the bumper mounting plates up with the mounting holes on your vehicle's frame horns. (Fig D)



4. Secure the bumper to the frame horns using the supplied 1/2" Bolts (x8), 1/2" Washers (x16), and 1/2" Lock Nuts (x8). Leave these finger tight for now.

5. Line the bumper up so that it is centered left to right and sits straight in relation to the lower line of the grill and headlights. (This is where a second person might be necessary) Torque the bolts to 70 foot pounds.
6. Using a utility knife, trim your inner fender liners to preference. We suggest following a line similar to what is shown in Fig E.
7. Stand back and enjoy your new ADD Lite Front Bumper.
8. Check and re-tighten if needed, all mounting bolts after 100 miles and periodically thereafter.



**Fig E**

