



Preparation:

- Disconnect the negative battery terminal. Park the vehicle on level ground and set the emergency brake.
- We recommend reading through the installation instructions in whole before performing the work.
- Estimated Installation Time: **2 Hours**

****This installation requires 2 people for best results****

You will need the following tools:

- | | | |
|------------------------|-----------------|------------------------|
| - Ratchet | - 10mm Socket | - 13mm Socket |
| - 15mm Socket & Wrench | - 17mm Socket | - 18mm Socket & Wrench |
| - 9/16" Socket | - Utility Knife | |

Included in Kit:

- | | |
|--|--|
| 6 - Hex Head Bolts (3/8"-16 x 1/4") | 6 - Flat Washers (3/8") |
| 6 - Long Reach U-Nuts (3/8"-16) | 6 - Hex Head Bolts (M10-1.5 x 30mm) |
| 6 - Flat Washers (M10) | 1 - Universal Light Mounting Kit |
| 2 - Bumper Mounting Plates (Non-Winch Only) | 1 - Winch Mounting Plate (Winch Only) |

Removal:

1. Using a T-15 Torx Bit, remove the two (per side) front lower inner fender well bolts. (Fig A)



Fig A



- Using a 13mm Socket remove the skid plate mounting bolts (x4). Then, remove the skid plate from the vehicle. Once the skid plate is removed, reinstall the 2 rear bolts. (Fig B)

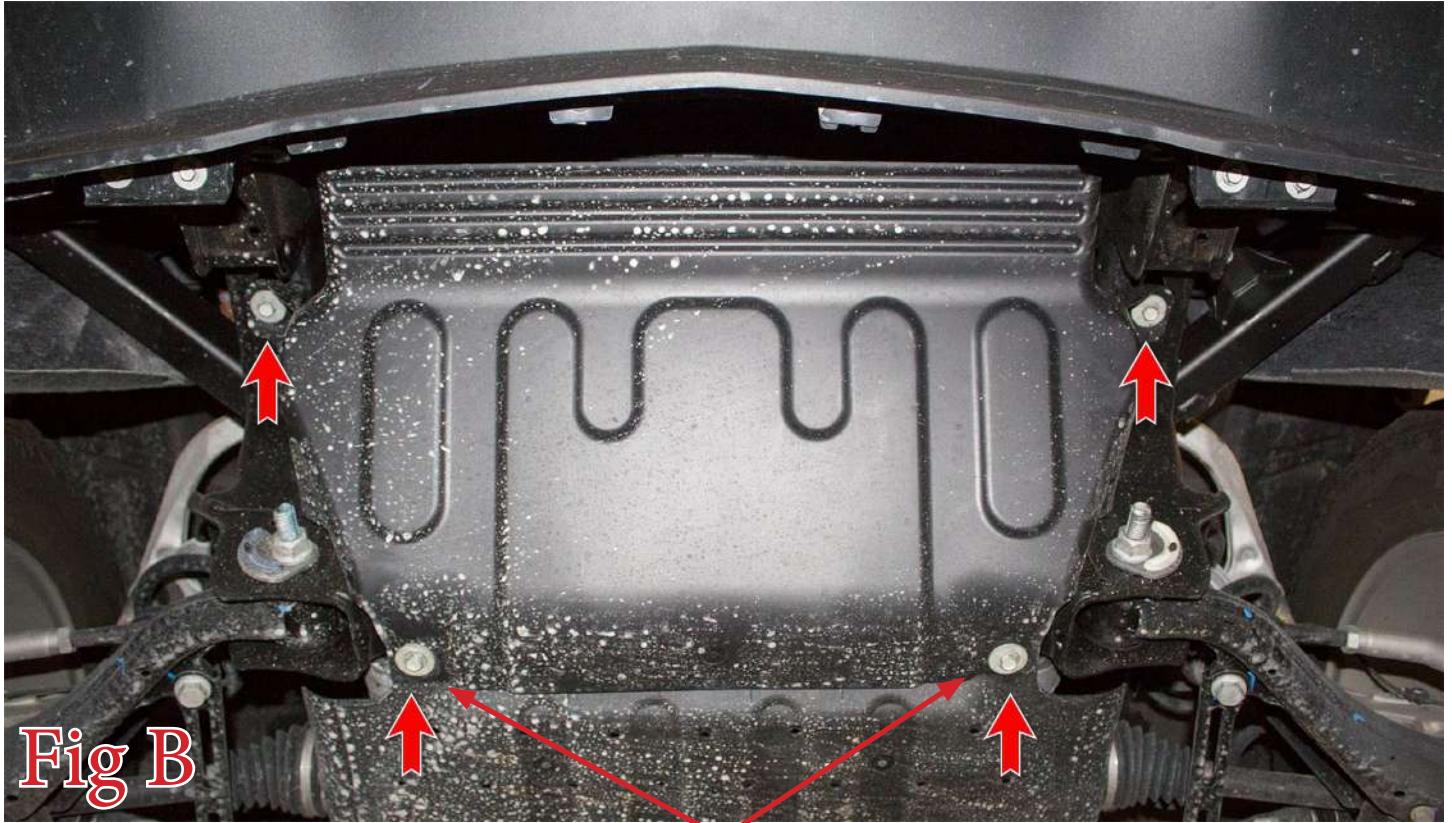


Fig B

Once you remove the skid plate, reinstall these two bolts.

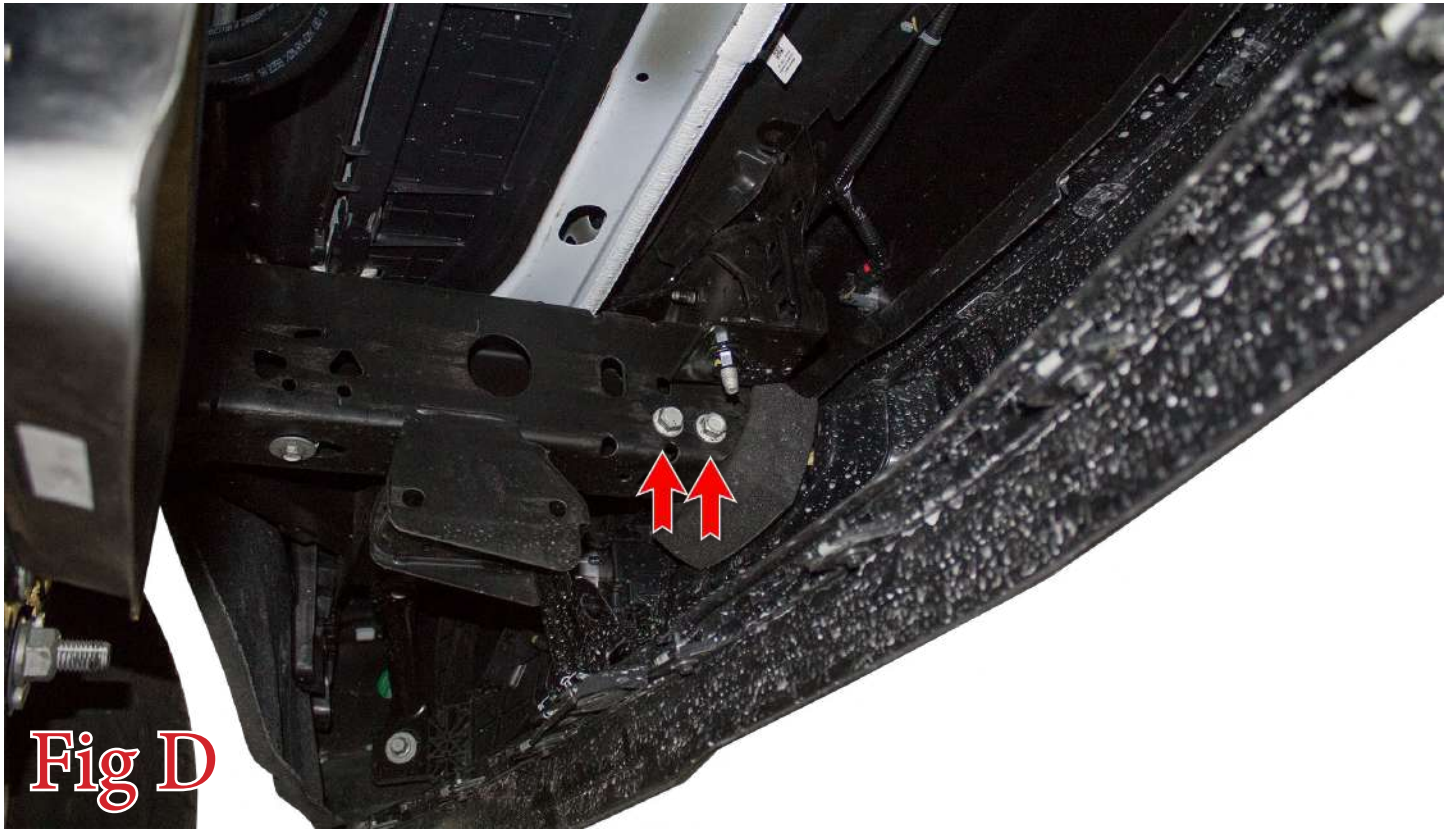
- Using a 10mm Socket, remove the bolts (x4) on the underside of the OEM bumper. (Fig C)



Fig C



4. Using an 18mm Socket, remove the two tow hook mounting bolts (per side). Then, pull the tow hooks out the front of the bumper. (Fig D)



5. Using a 15mm Socket, remove the bumper support bar mounting bolts (3 per side). Then, remove these bumper support bars from the vehicle. (Fig E)





6. On the passenger side of the vehicle, just in front of the inner fender liner, unplug the main bumper harness connector. (Fig F)



Fig F

7. Using a 15mm Wrench, loosen the 3 bolts per side that hold the bumper to its mounting brackets. Do not take these all the way out, just loosen them until the bumper is loose and drops down about a half inch. The head of the bolts are between the bumper and the frame horn, you will need a wrench to access them. (Fig G)

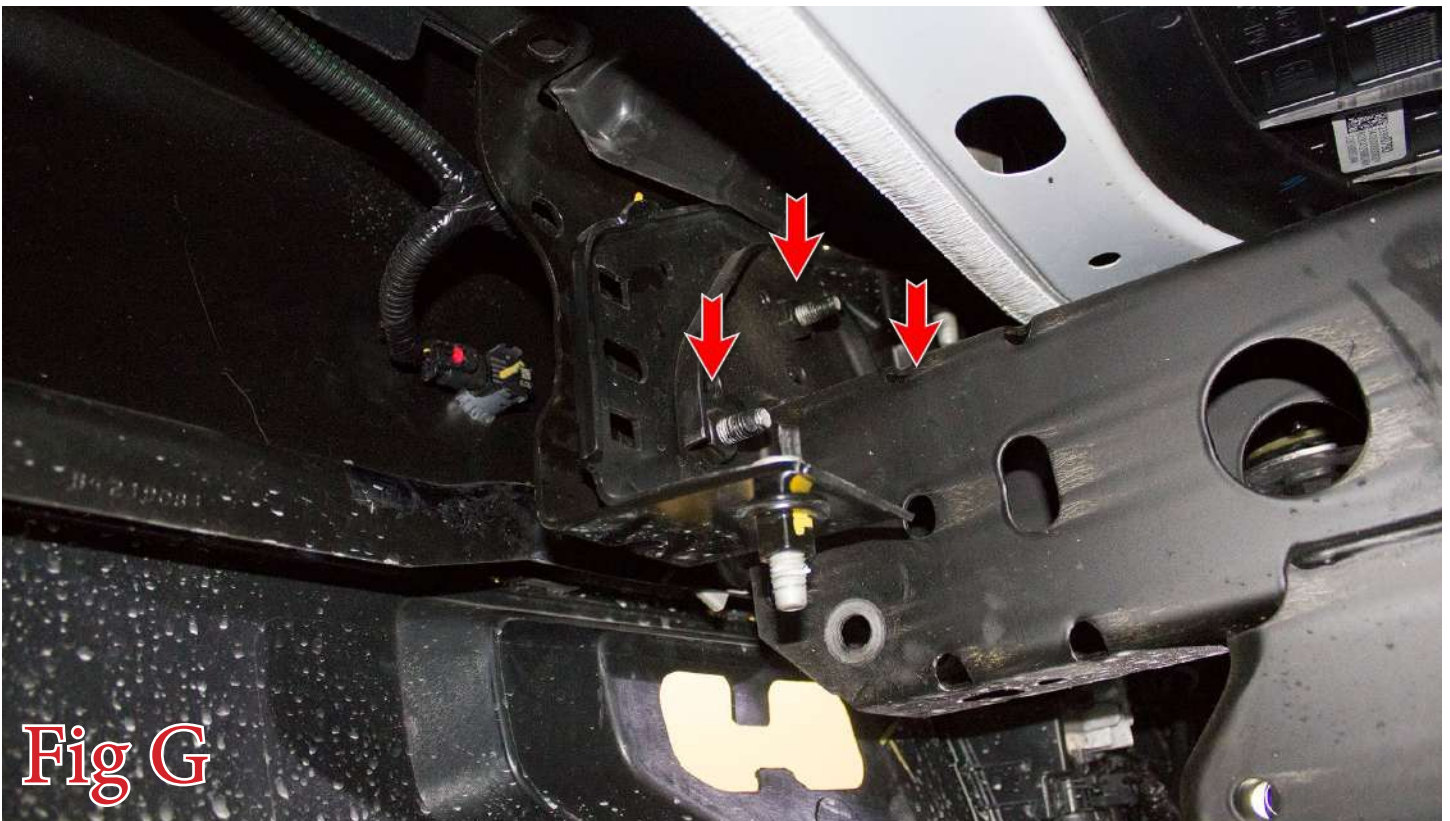
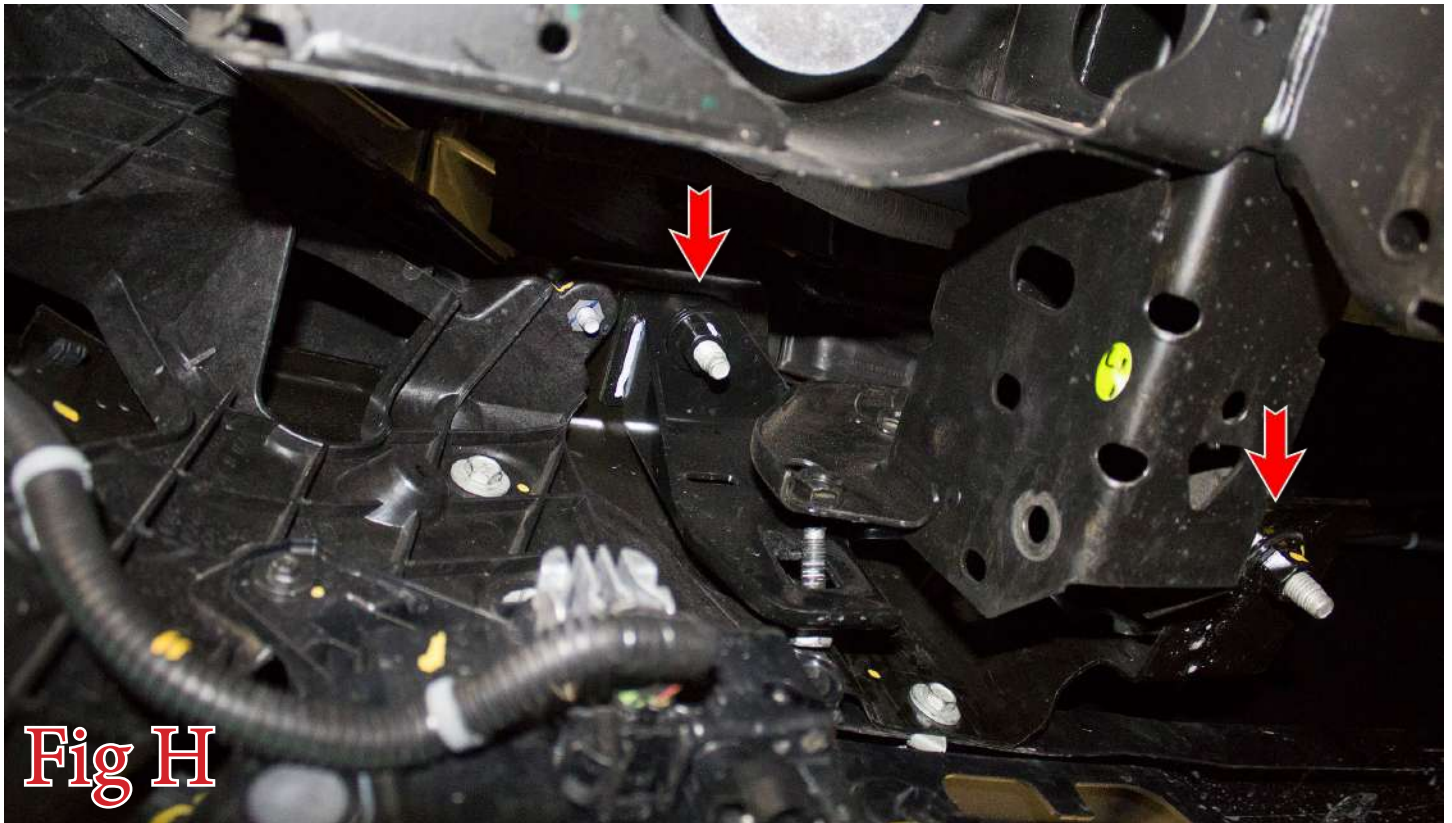


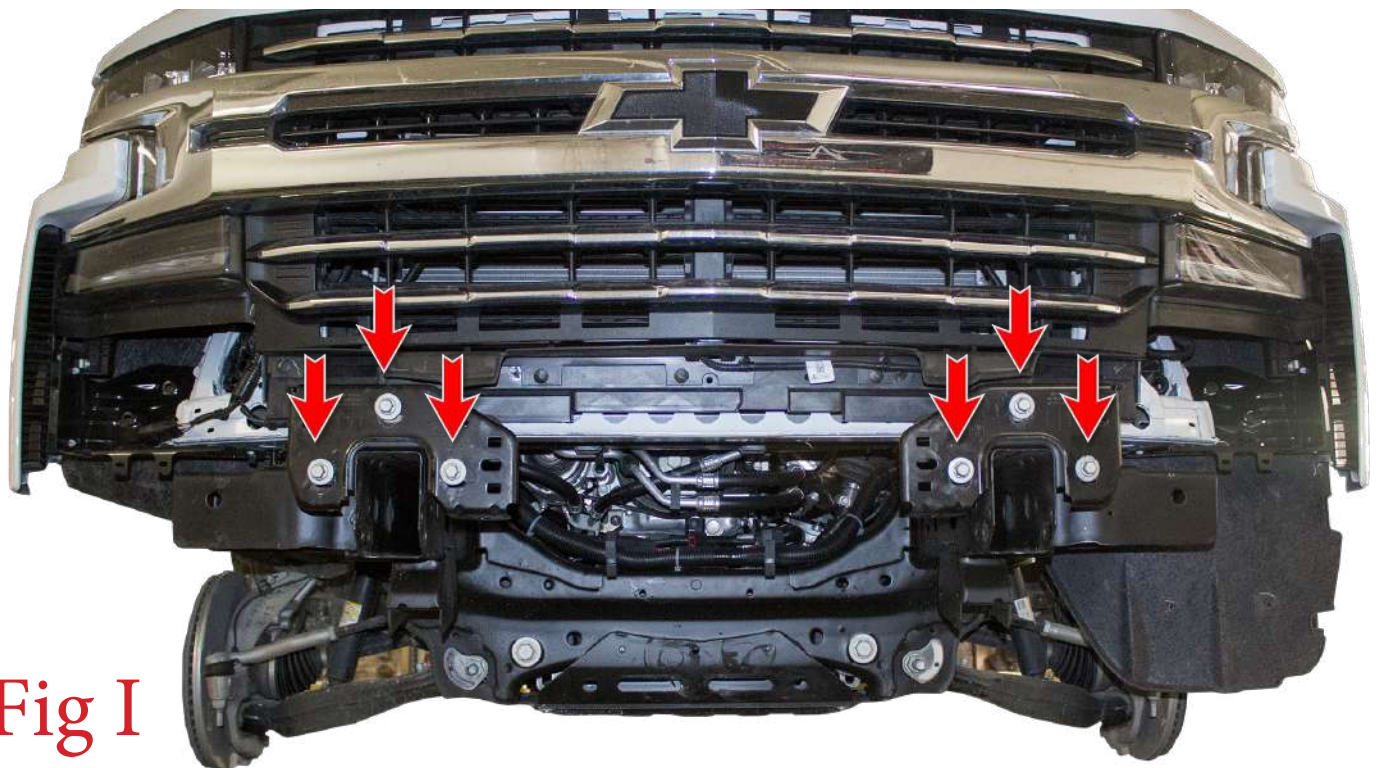
Fig G



8. Now that the bumper has dropped a little, you can access the two bolts (per side) that hold the bumper to its mounting brackets with an 18mm Wrench. Remove these bolts, then remove the OEM bumper from the vehicle. (Fig H)



9. Using a 15mm Socket, remove the bumper brackets from the truck's frame horns. (Fig I)





10. Using a 10mm Socket, remove the four bolts that hold on the plastic fender liner brackets. Then, remove these brackets from the vehicle. (Fig J)

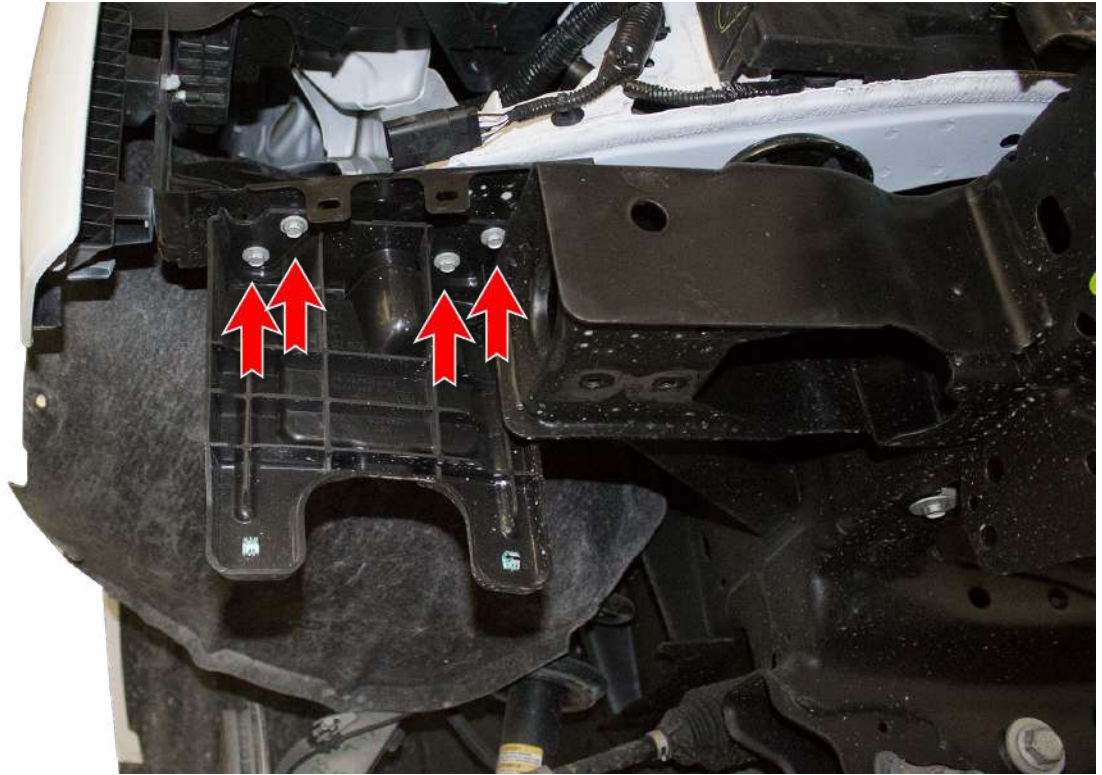


Fig J

11. Remove the bolts (one per side) that hold on the skid plate mounting brackets. Then, remove these brackets. (Fig K)

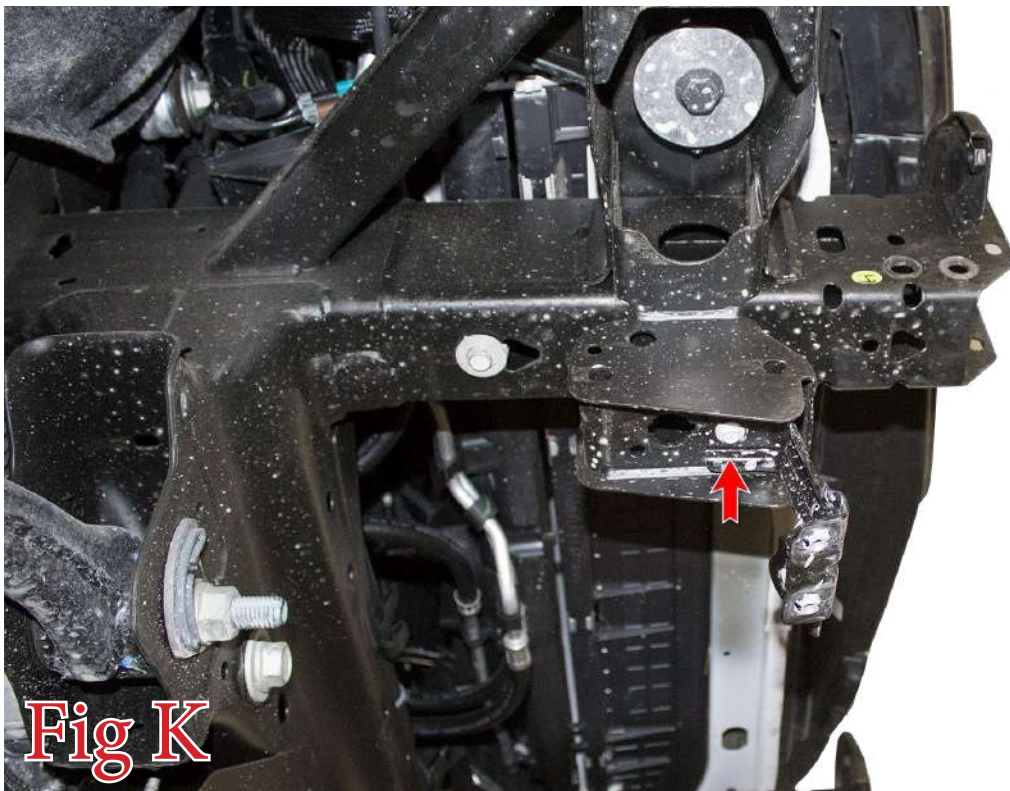
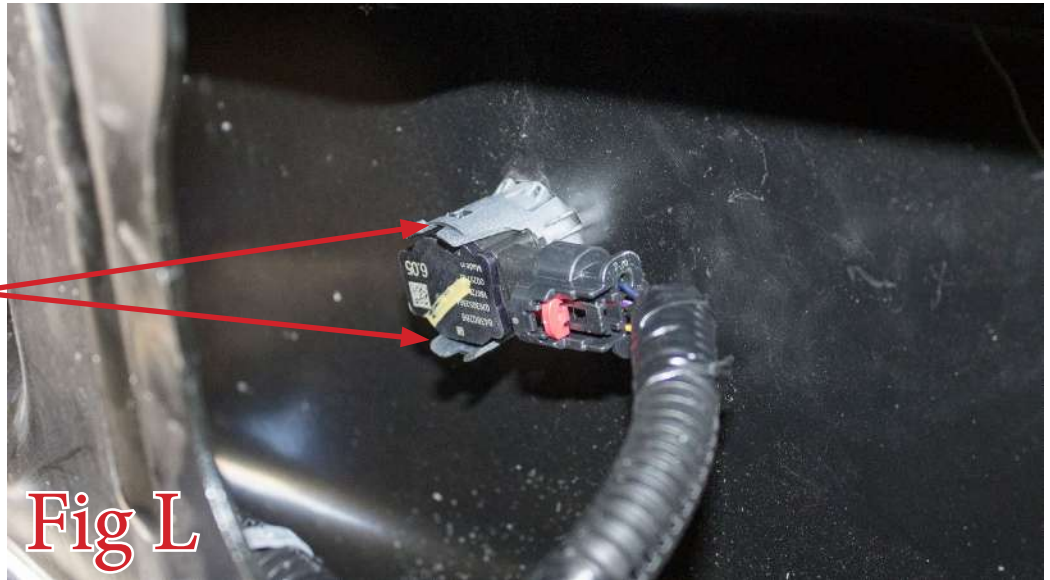


Fig K



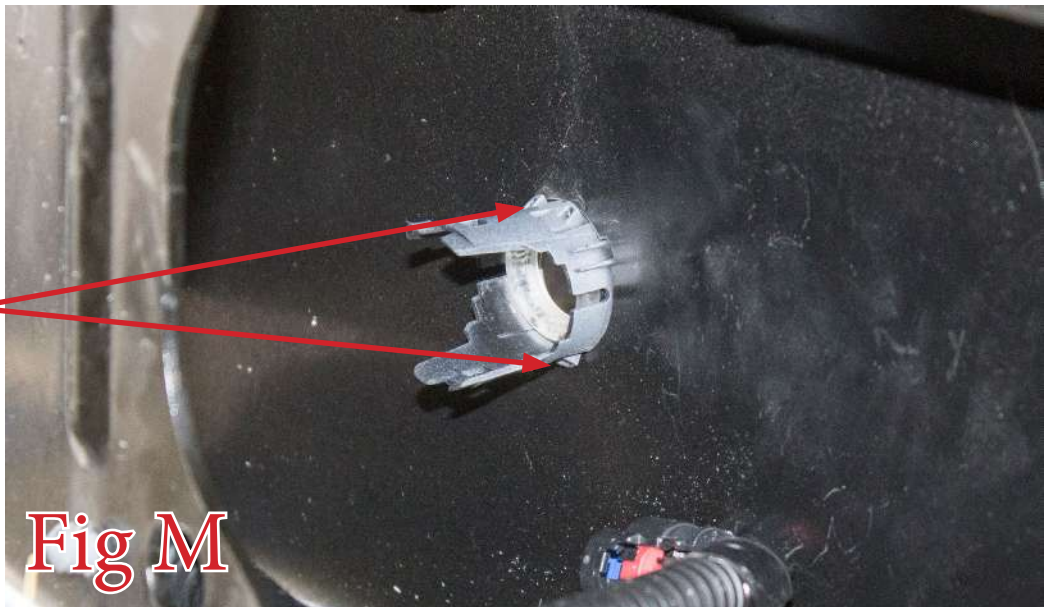
12. Remove the parking sensors from your OEM bumper. Do this by spreading the two tabs on the back side of the sensor mounting rings. Make sure to keep track of the position/orientation that these come off your OEM bumper so you can install them on your new bumper in the same position/orientation. (Fig L)

Spread these two tabs to release the sensor.



13. Remove the parking sensor mounting rings. Do this by squeezing the two tabs on the back side of the mounting ring and pushing that ring out the front side of the bumper. (Fig M)

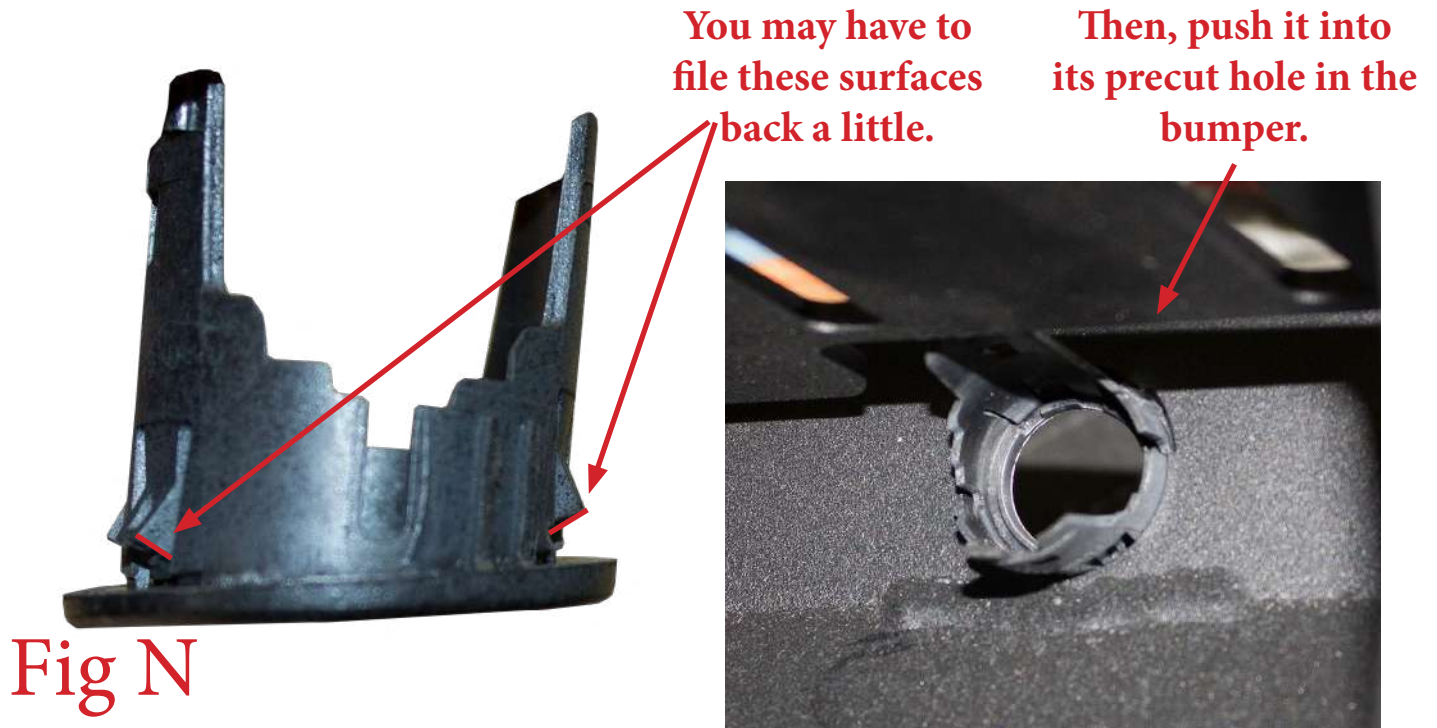
Squeeze these two tabs to release the ring.





Installation:

14. Install the parking sensor mounting rings into your new bumper. Be sure to install them in the same position/orientation as they came off the OEM bumper. If the rings do not click into place, you may have to file the tabs down a little to allow for the thicker material of your new bumper. (Fig N)



15. Install the parking sensors by pressing them into the back side of the mounting rings until they click into place. Be sure to install these in the same position/orientation as they came off the OEM bumper. (Fig O) Plug the harness in as you install the sensors and make sure to secure the harness out of harm's way with the main connector on the same side as it came off your OEM bumper.





16. Install the bumper harness onto your new bumper. Run it out of harm's way and plug it into the parking sensors. Make sure to keep the main connector on the same side as it came off the OEM bumper. (Fig P)



Fig P

17. If you have any lights to install on your bumper, now is a good time to do so. Please use the supplied universal light mount kit to mount your center lights.

For all other lights and all wiring (including your center light) follow the light manufacturer's install guide.

18. Install the supplied U-Nuts (x6) onto your new bumper. (Fig Q)

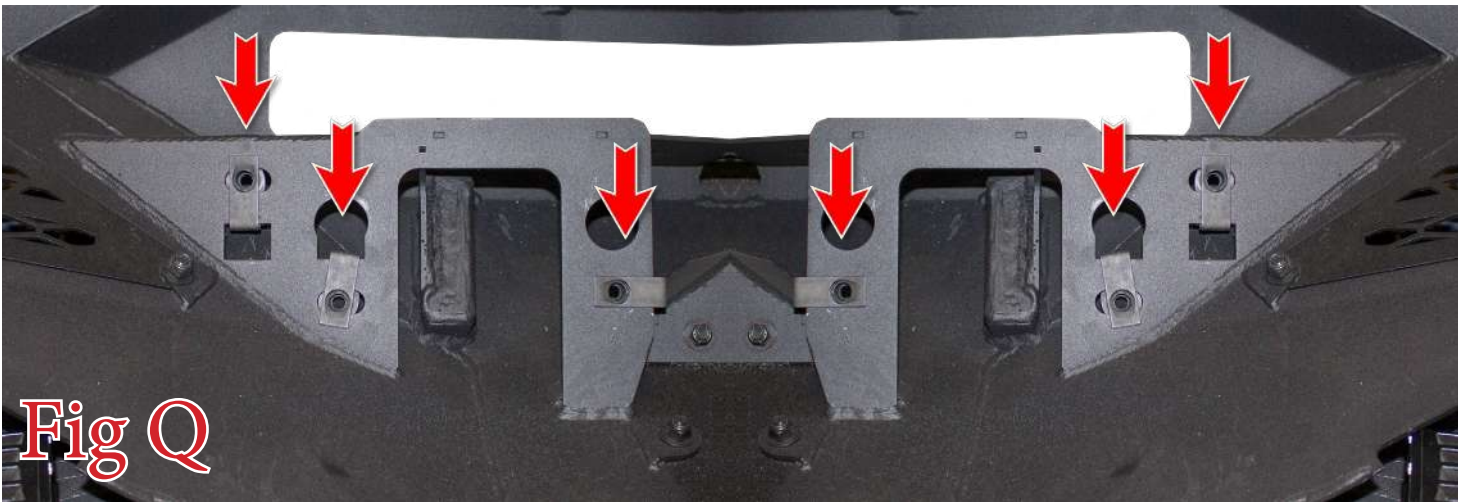


Fig Q



19. If your bumper is a non-winch version, you will have two bumper mounting plates to, but if your bumper is a winch version, you will have one winch plate. Use the supplied M10 Bolts (x6) and M10 Washers (x6) to mount the winch plate (or bumper mounting plates) to your vehicle's frame horns. (Fig R)

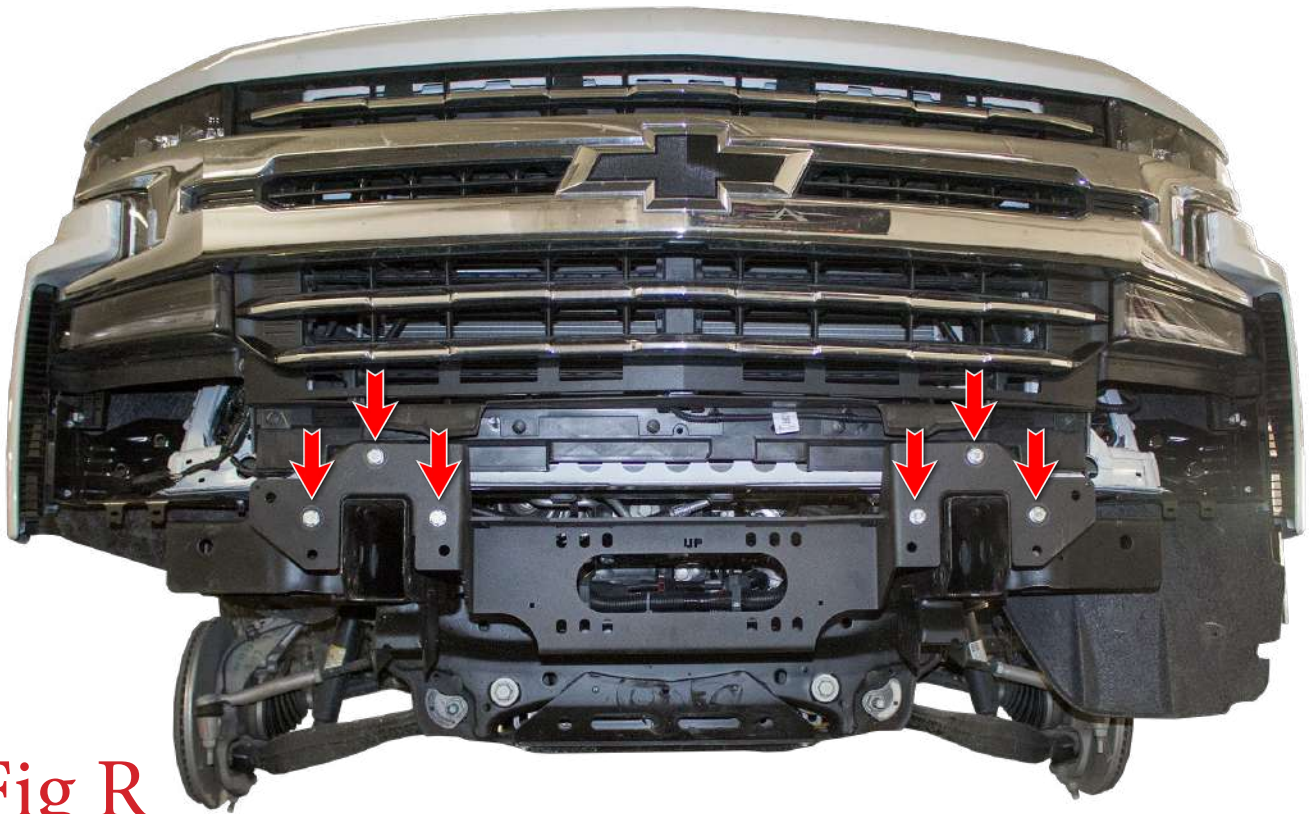


Fig R

20. Bolt your winch to the winch plate using the hardware supplied with the winch. After the winch is bolted to the winch plate, you will have to follow the winch manufacturer's install guide for wiring and the rest of the mounting information. (Fig S)



Fig S



21. Set the bumper in place on the vehicle. Install the supplied 3/8" Hex Head Bolts (x6) and 3/8" Washers (x6) from the back side of the winch plate/mounting brackets into the newly installed U-Nuts. Leave these bolts loose for now. (Fig T) Leave these bolts loose for now.



Fig T

- 22. Align the bumper so it sits straight in relation to the grille and is centered left to right. Then, torque the 3/8" mounting bolts to 25 foot pounds.
- 23. Plug in the main bumper harness into the connector from Step 6.
- 24. Using a utility knife, or something similar, trim the inner fender liner to preference. (Fig U)

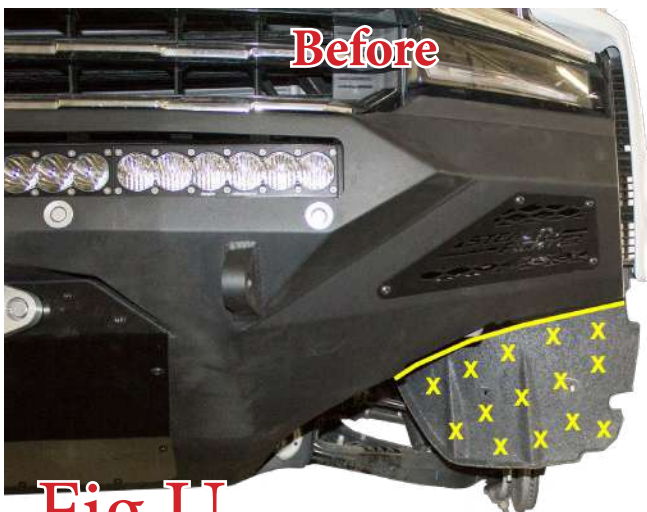


Fig U



25. Stand back and enjoy your new ADD Stealth Fighter™ Front Bumper.
26. Check and re-tighten, if needed, all mounting bolts after 100 miles and periodically thereafter.

