

# ADDICTIVE DESERT DESIGNS

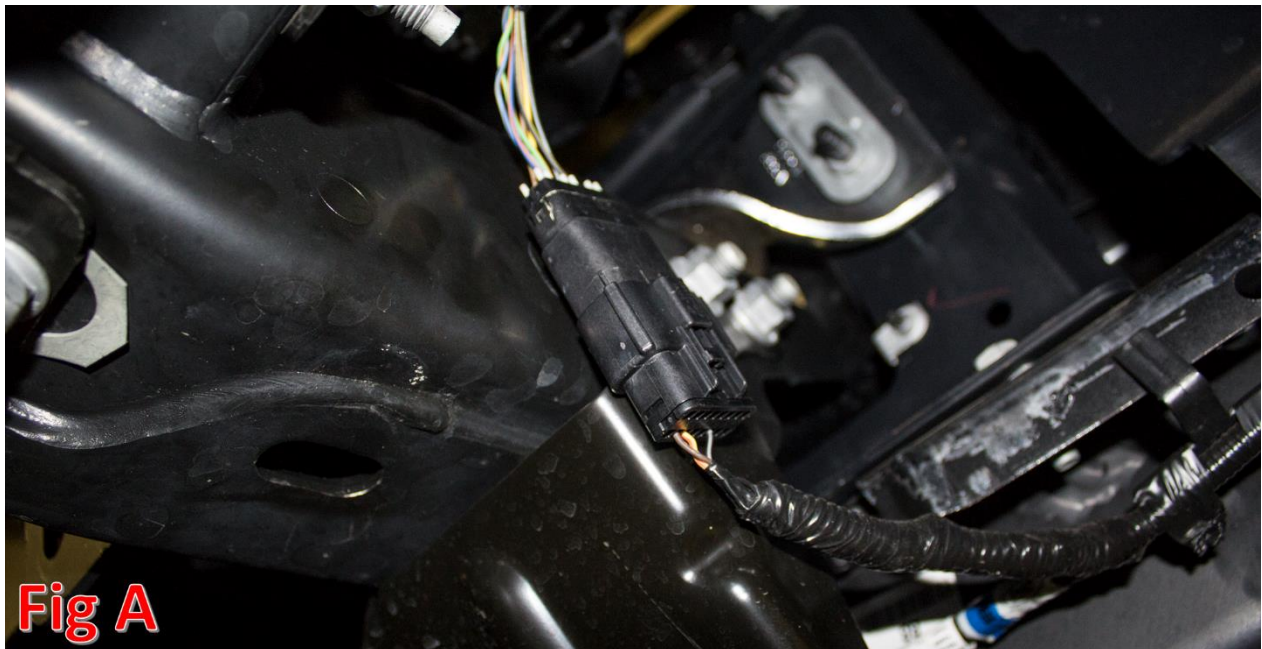
## 2017 – Current Ford SuperDuty Stealth Front Bumper Installation Instructions

### PREPARATION

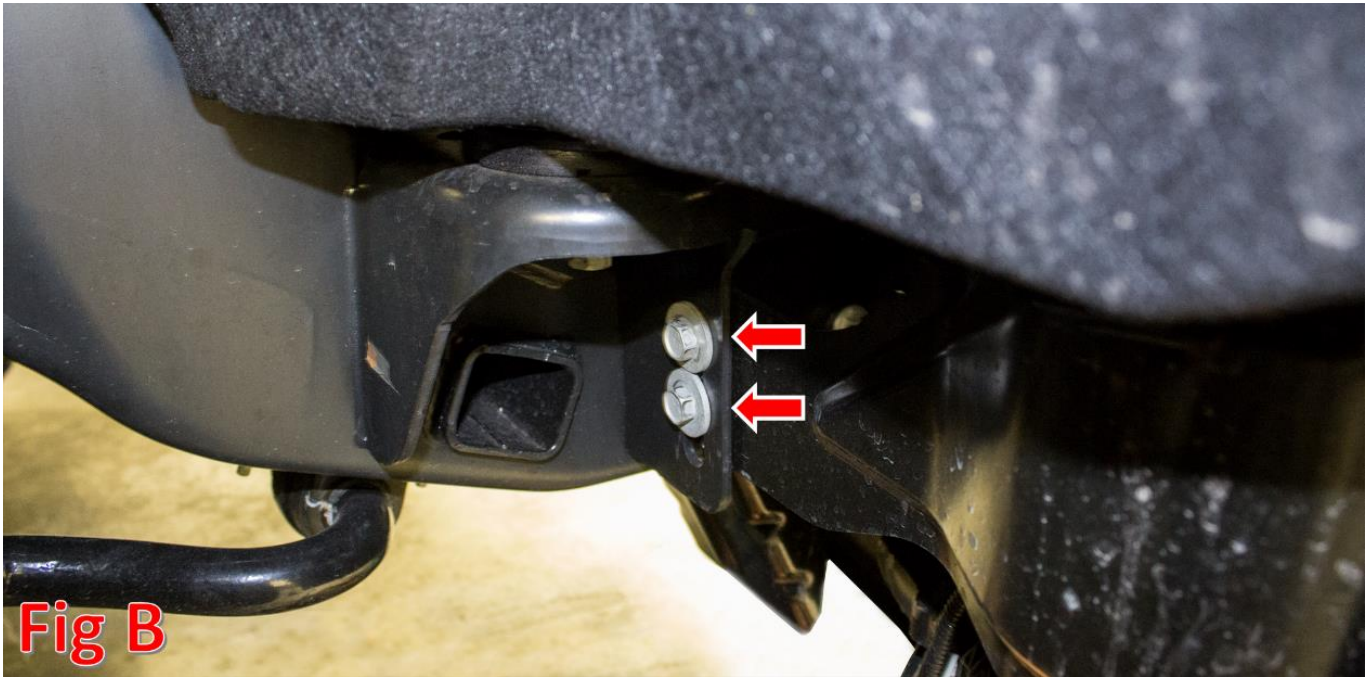
1. Disconnect the negative terminal on the battery. Park the vehicle on level ground and set the emergency brake.
  2. We recommend reading through the installation instructions in whole before performing the work.
  3. Estimated Installation Time: **2 Hours**
  4. You will need the following tools:
    - a. Ratchet
    - b. 15mm Socket
    - c. 18mm Socket
    - d. 3/4" Socket & Wrench
- Note: this installation requires 2 people for best results*
5. Included in Kit:
    - 4 – Hex Head Bolts – 1/2"-13 x 1 1/2"
    - 8 – Washers – 1/2"
    - 4 – Nylon Lock Nuts – 1/2"-13

### REMOVAL

1. Unplug the main fog light harness connector. This connector is located along the driver side frame rail underneath the truck. (Fig A)



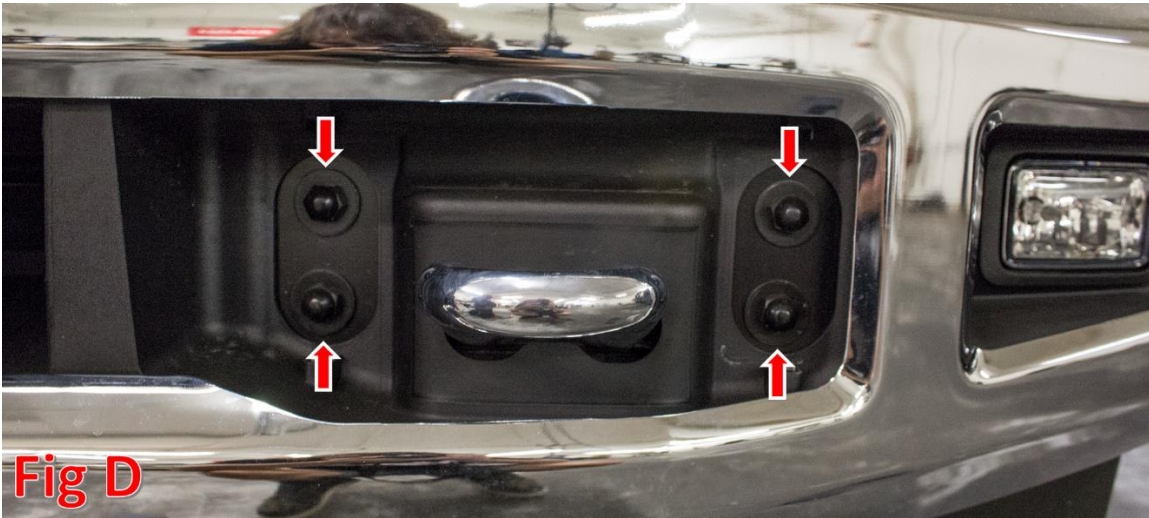
2. Use a 15mm Socket to remove the two bolts (per side) that secure the OEM bumper side supports. These bolts can be seen when looking into the wheel well, towards the front of the truck. Save these bolts for reuse. (Fig B)



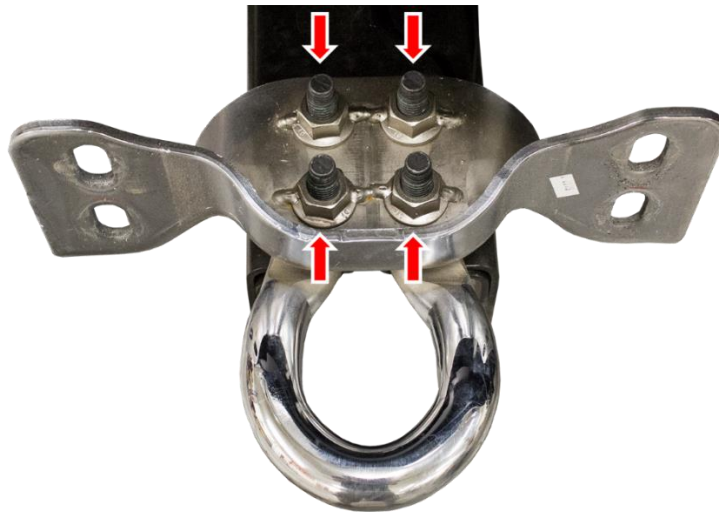
3. Remove the two plastic covers that sit around the tow hooks by unclipping the two top clips that hold them on. (Fig C)



4. Use an 18mm Socket to remove the OEM bumper mounting bolts (4 per side) that are visible after removing the two small plastic covers. (Fig D)



5. Remove the OEM front bumper.
6. Use an 18mm to remove the tow hook mounting bolts (4 per side), then remove the tow hooks. (Fig E)



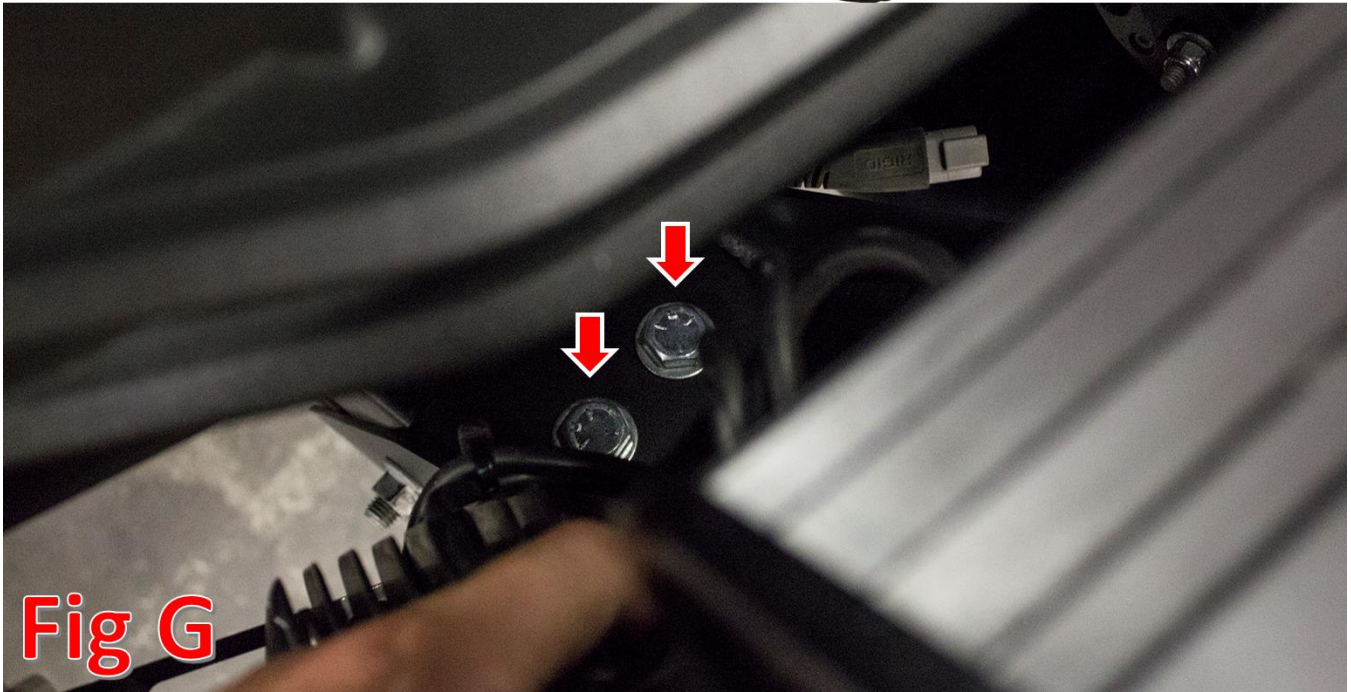
7. Use an 18mm Socket to remove the mounting nuts (4 per side) for the lower brackets on each frame rail. Then, remove these brackets. Save these bolts for reuse. (Fig F)



8. Prepare to install your new Front Bumper.

## INSTALLATION

1. If you purchased any lights, now is a good time to install those on your bumper. Please follow the light manufacturer's installation instructions for mounting/wiring information.
2. Line the mounting holes on the back of your new bumper up with the mounting holes on the vehicle's frame horns. For the mounting holes on the top of the frame horn, loosely install the supplied 1/2" Bolts (x4), 1/2" Washers (x8), and 1/2" Nylon Lock Nuts (x4). For the mounting holes on the sides of the frame horn, use the bolts you removed in Removal Step 7. (Fig G)



3. Tighten the top mounting bolts first (70 foot pounds). Then go through and tighten the rest of the mounting bolts to the manufacturer's torque specification.
4. Stand back and enjoy your new ADD Stealth Front Bumper.
5. Check and re-tighten if needed, all mounting bolts after 100 miles and periodically thereafter.

