



Preparation:

- Disconnect the negative battery terminal. Park the vehicle on level ground and set the emergency brake.
- We recommend reading through the installation instructions in whole before performing the work.
- Estimated Installation Time: **2 Hours**

****This installation requires 2 people for best results****

You will need the following tools:

- Ratchet
- 3/4" Socket & Wrench
- 15mm Socket
- Cutoff Wheel (Winch Model Only)
- 18mm Socket
- 9/16" Socket

Included in Kit:

- 4 - Hex Head Bolts (1/2-13 x 1 1/2")
- 4 - Nylon Lock Nuts (1/2"-13)
- 8 - Flat Washers (3/8")
- 2 - Bumper Mounting Brackets
- 8 - Flat Washers (1/2")
- 8 - Hex Head Bolts (3/8"-16 x 1")
- 8 - U-Nuts (3/8"-16)

Removal:

1. Unplug the main fog light harness connector. This connector is located along the driver side frame rail underneath the truck. (Fig A)



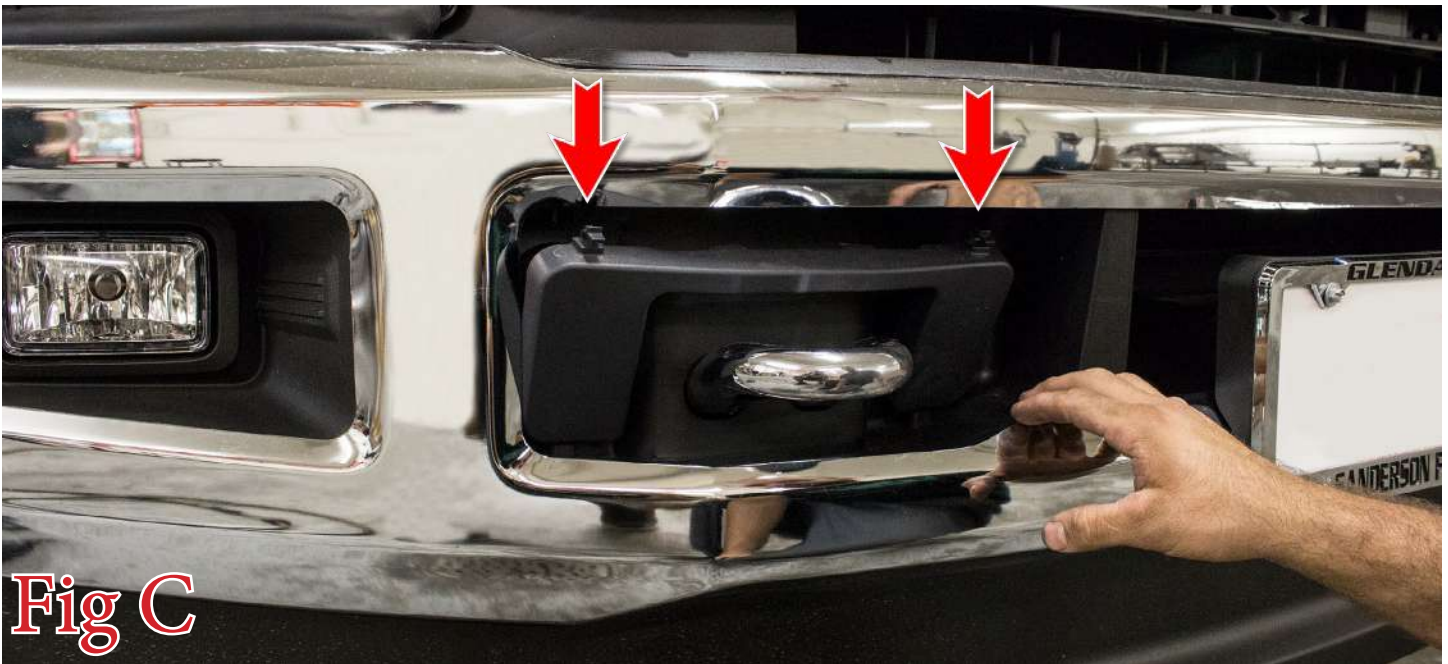
Fig A



2. Use a 15mm Socket to remove the two bolts (per side) that secure the OEM bumper side supports. These bolts can be seen when looking into the wheel well, towards the front of the truck. Save these bolts for reuse. (Fig B)



3. Remove the two plastic covers that sit around the tow hooks by unclipping the two top clips that hold them on. (Fig C)

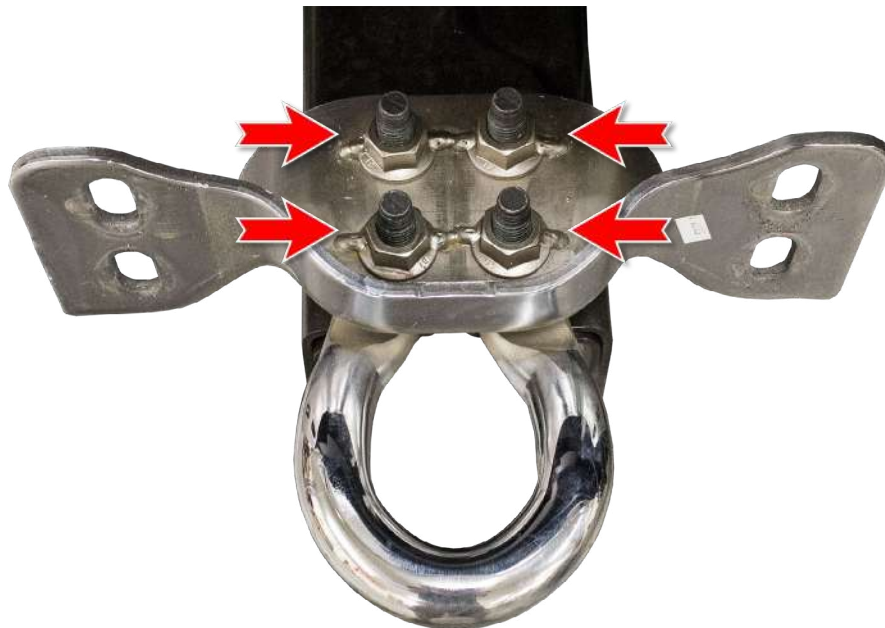




4. Use an 18mm Socket to remove the OEM bumper mounting bolts (4 per side) that are visible after removing the two plastic covers. (Fig D)



5. Remove the OEM Bumper.
6. Use an 18mm to remove the tow hook mounting bolts (4 per side), then remove the tow hooks. (Fig E)





7. Use an 18mm Socket to remove the mounting nuts (4 per side) for the lower brackets on each frame rail. Then, remove these brackets. Save these bolts for reuse. (Fig F)

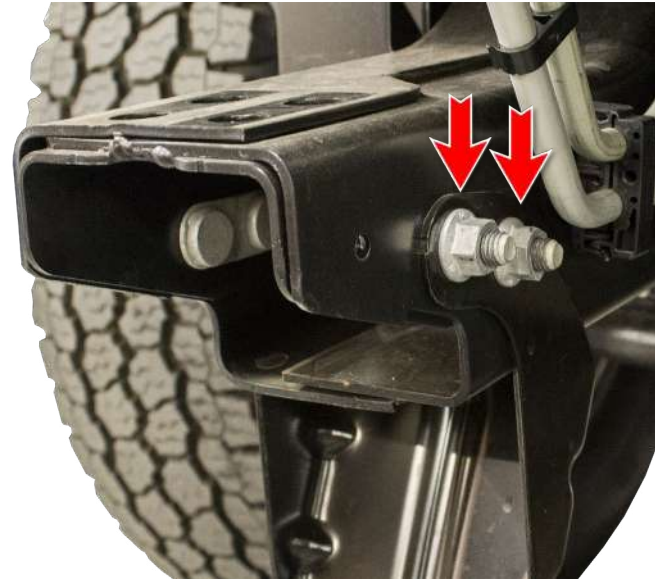
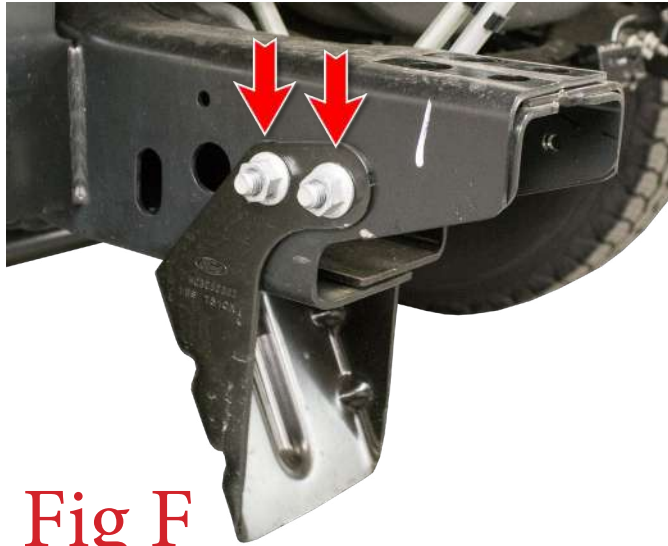


Fig F

Installation:

- 8. If you purchased lights or a winch, now is a good time to install those on your bumper. Please follow the light/winch manufacturer's installation instructions for mounting/wiring information.
- 9. Remove the double nutclip from the OEM bumper and reinstall that clip on the slot coming off of the most forward body mount. (Fig G)

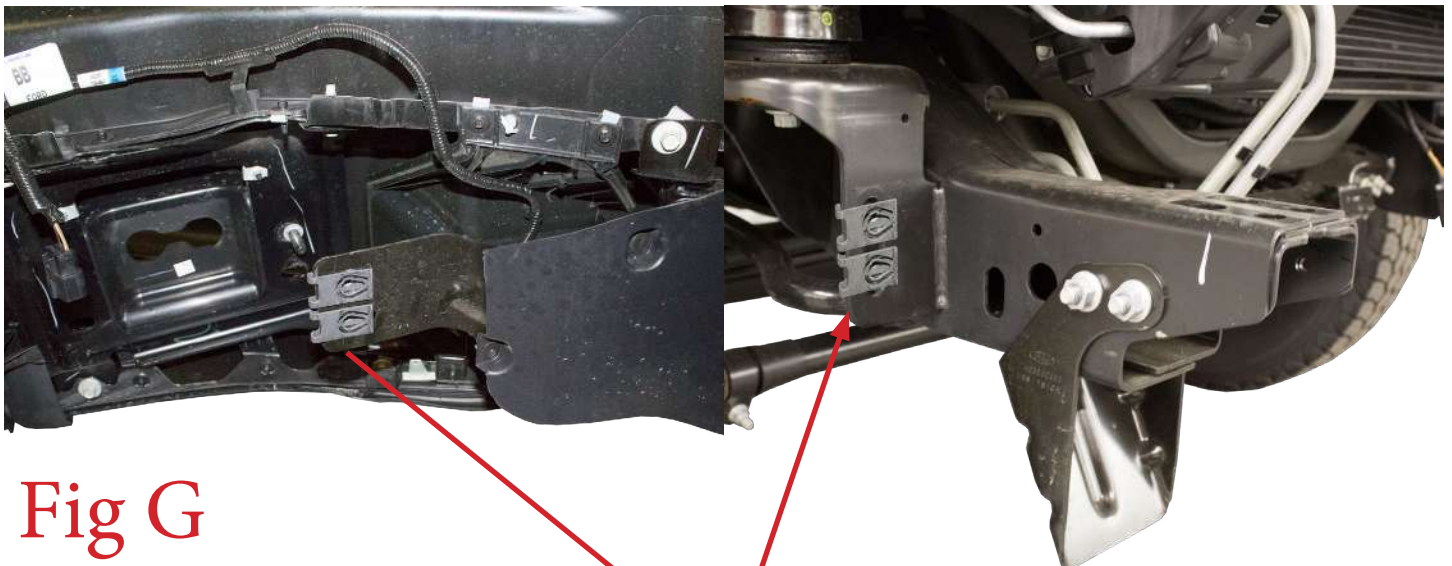
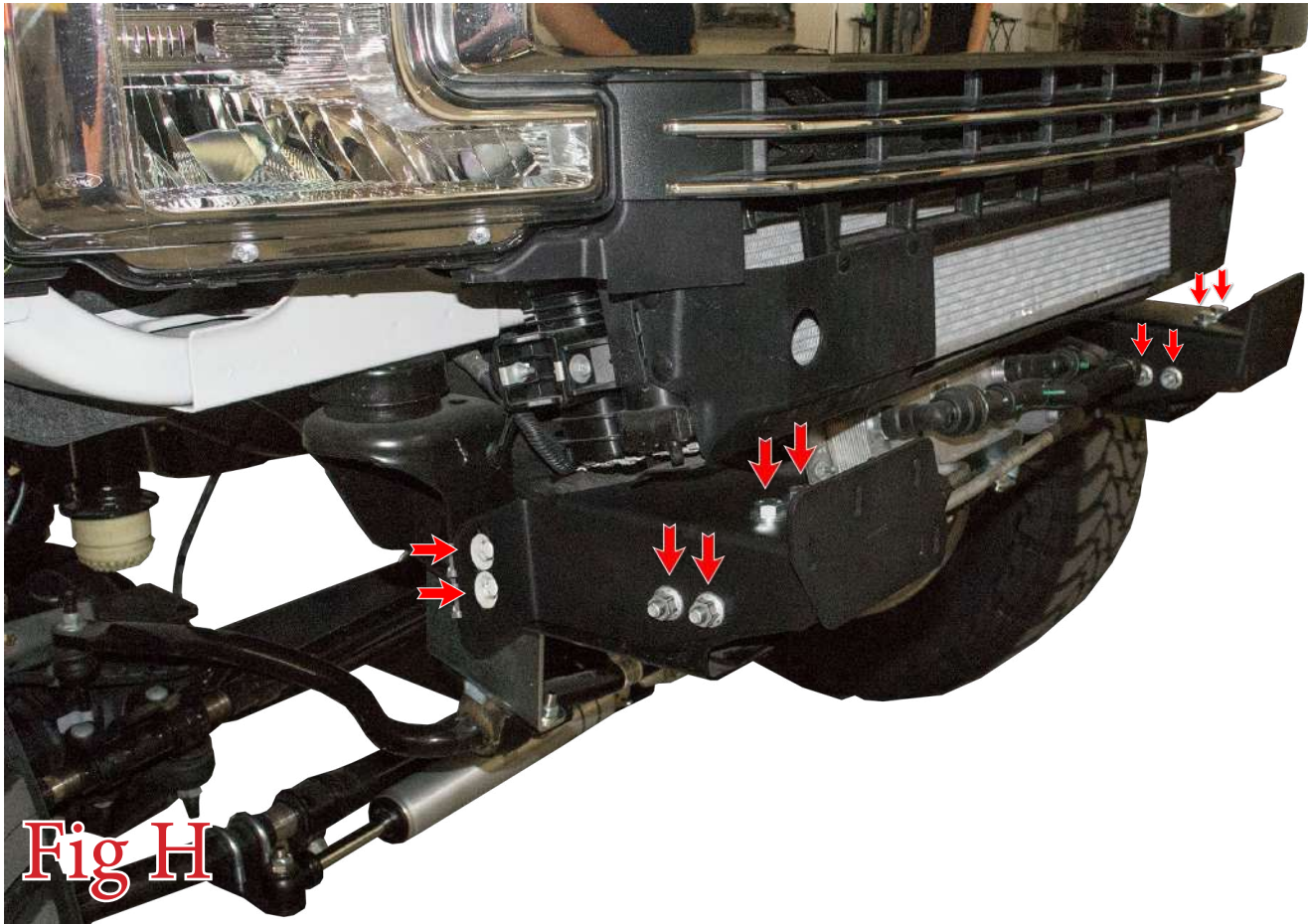


Fig G

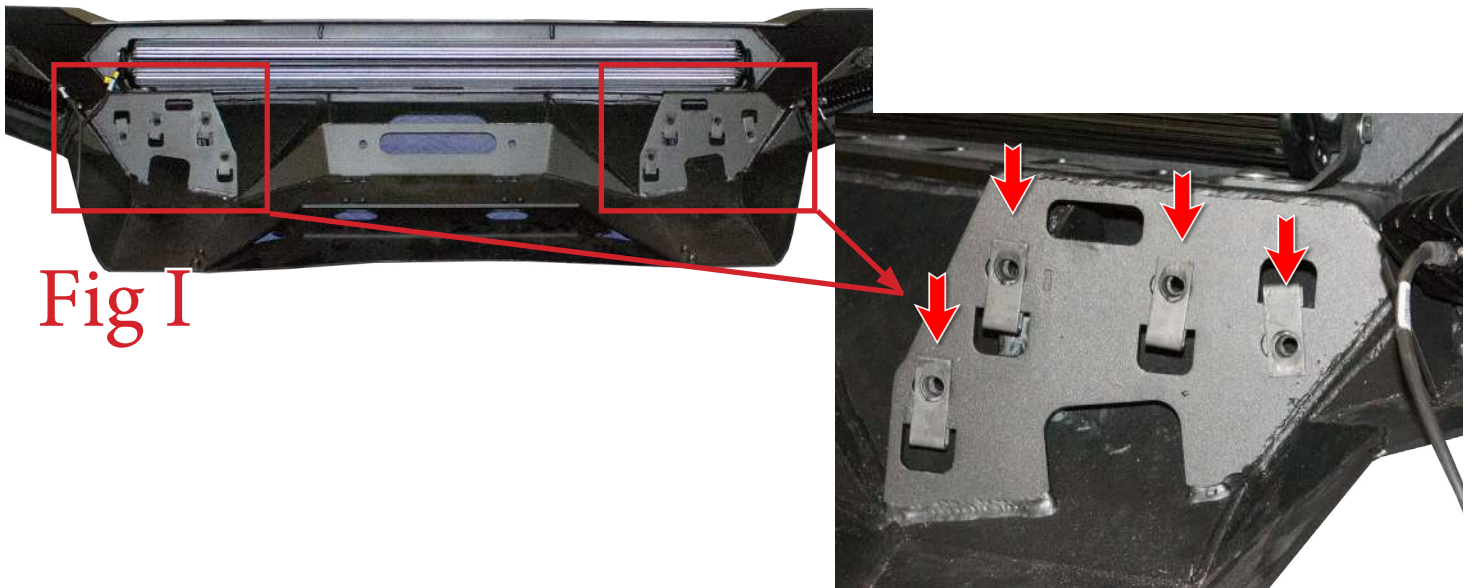
**Remove this Clip from the OEM Bumper
and Install Here**



10. Install the supplied Bumper Mounting Brackets (x2) on the vehicle. For the top two mounting holes, use the supplied 1/2" Bolts (x2), 1/2" Washers (x4), and 1/2" Nuts (x2). For the two mounting holes on each side, use the OEM hardware from Step 7. Then, for the mounting holes that sit against the newly installed nut clips, use the OEM bolts from Step 2. Once all bolts are loosely installed, go back and torque the 1/2" mounting bolts to 70 foot pounds. Torque all OEM bolts to OEM torque specs. (Fig H)



11. Install the supplied U-Nuts (x8) in the mounting holes on your new bumper. (Fig I)





12. If you have a winch mounted to your bumper, you will have to trim the plastic just below the grille before fitting the bumper to the vehicle. To do this, hold the bumper in place and mark out where the winch will hit the plastic. Then, use a cutoff wheel or something similar to trim the plastic until it clears the winch. (Fig J) shows one possible cut line (each winch will be a little different).

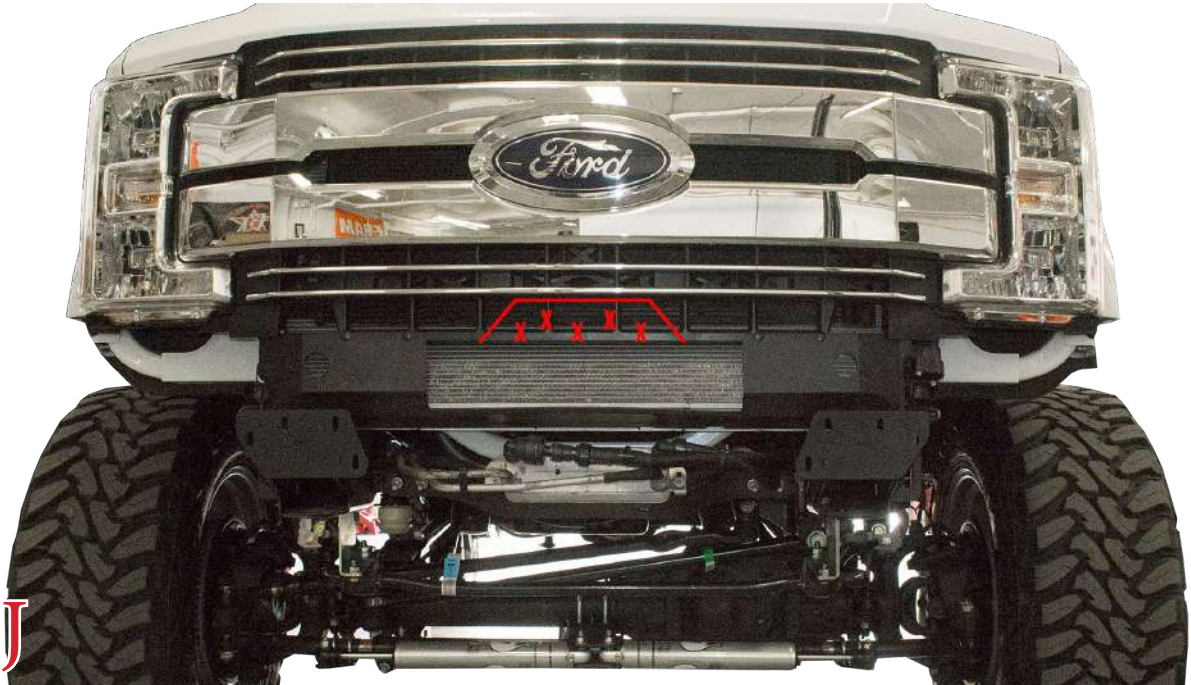


Fig J

13. Set the bumper in place on the vehicle. Then, loosely install the supplied 3/8" Bolts (x8) and 3/8" Washers (x8) from the back side of the Bumper Mounting Brackets. (Fig K)

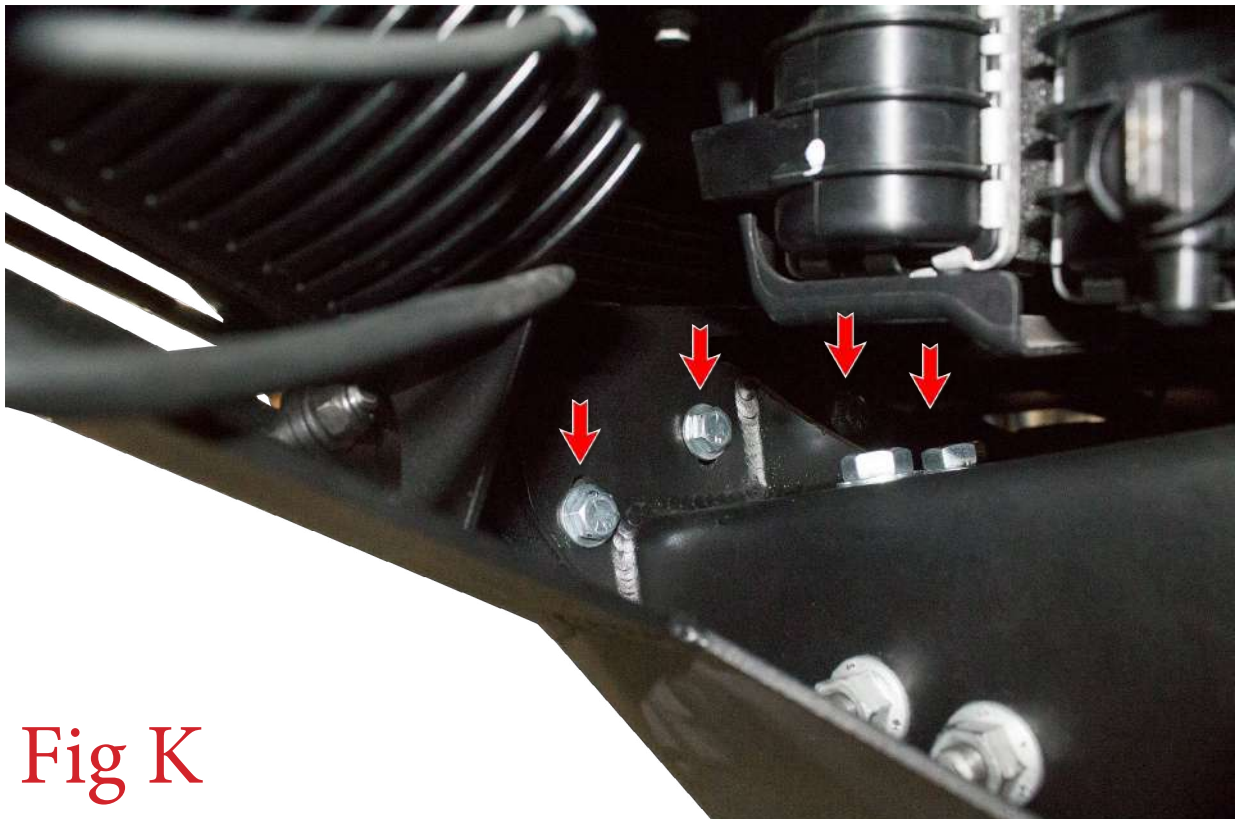


Fig K



14. Align the bumper so it sits straight in relation to the grille/headlights and centered left to right. Then, go back and torque the mounting bolts to 25 foot pounds.
15. Stand back and enjoy your new Stealth Fighter™ Front Bumper.
16. Check, and re-tighten if needed, all mounting bolts after 100 miles and periodically thereafter.

