

## Preparation:

- Disconnect the negative battery terminal. Park the vehicle on level ground and set the emergency brake.
- We recommend reading through the installation instructions in whole before performing the work.
- When button head bolts are being used, install the supplied washer on the nut side. Then, hold the bolt stationary and only turn the nut to tighten. Do not turn the bolt to tighten hardware assembly, unless otherwise noted.
- Estimated Installation Time: **1 Hours for Installation**  
**2 Additional Hours to Wire Lights/Actuator**

**\*\*This installation requires 2 people for best results\*\***

**\*\*Labor Rates are based on a vehicle with no pre-existing damage. Wiring labor is based on a standard wiring procedure with light switches installed in an easily accessible location. Custom light triggering or switch mounting location will result in a greater labor charge.\*\***

## You will need the following tools:

- |                   |                             |                             |
|-------------------|-----------------------------|-----------------------------|
| - Ratchet         | - 5/16" Allen Wrench/Socket | - 5/32" Allen Wrench/Socket |
| - 3/4" Wrench     | - 7/16" Wrench              | - Drill                     |
| - 7/16" Drill Bit | - Wire Crimpers             |                             |

## Included in Kit:

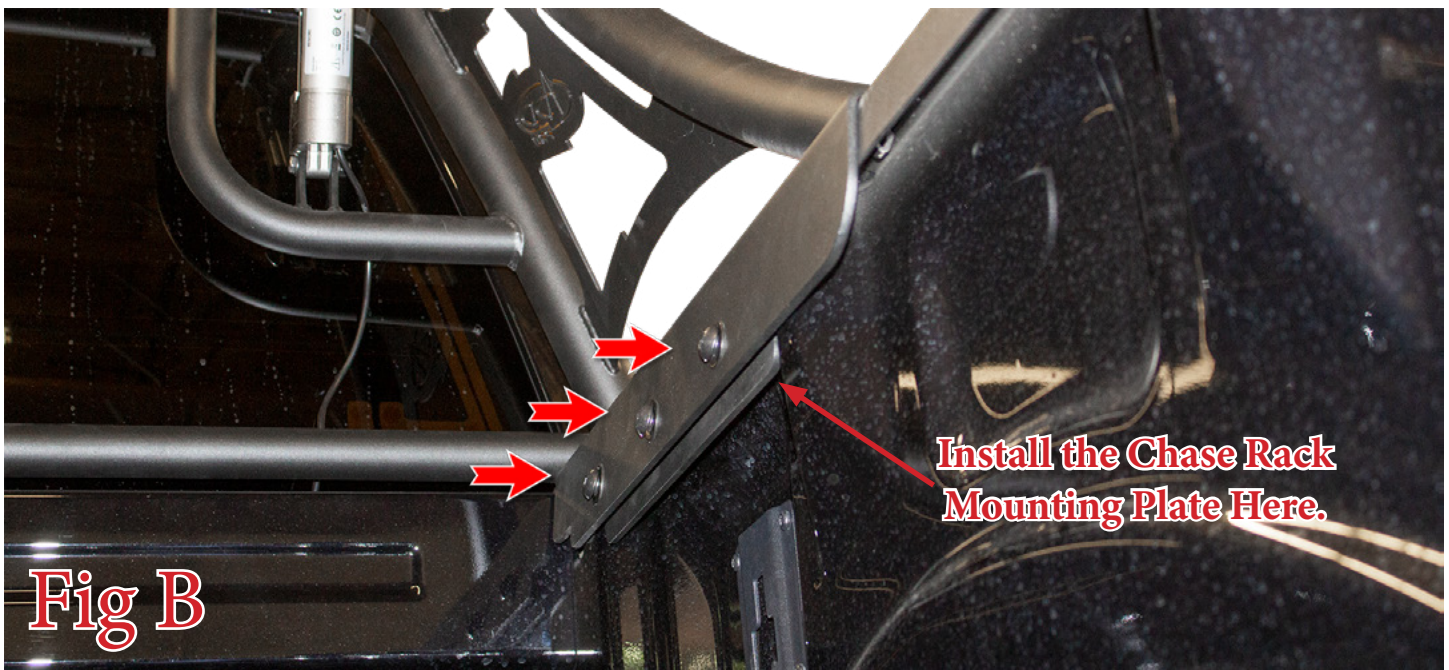
- |   |  |
|---|--|
| <b>6</b> - Button Head Bolts (1/2"-13 x 1 1/2")       | <b>12</b> - Flat Washers (1/2")                |
| <b>6</b> - Nylon Lock Nuts (1/2"-13)                  | <b>4</b> - Button Head Bolts (1/4"-20 x 1")    |
| <b>4</b> - Flat Washers (1/4")                        | <b>4</b> - Nylon Lock Nuts (1/4"-20)           |
| <b>2</b> - Chase Rack Mounting Plates                 | <b>2</b> - Light Mount Tabs (For Rigid Lights) |
| <b>2</b> - Light Mount Tabs (For Baja Designs Lights) | <b>1</b> - Actuator Harness (2 Pieces)         |
| <b>1</b> - Actuator Toggle Switch                     |  |

## Installation:

1. Set the Chase Rack in place on the vehicle. Line the front lip of the mounting plate on the chase rack up with the front lip of the plastic bed rail. (Fig A)

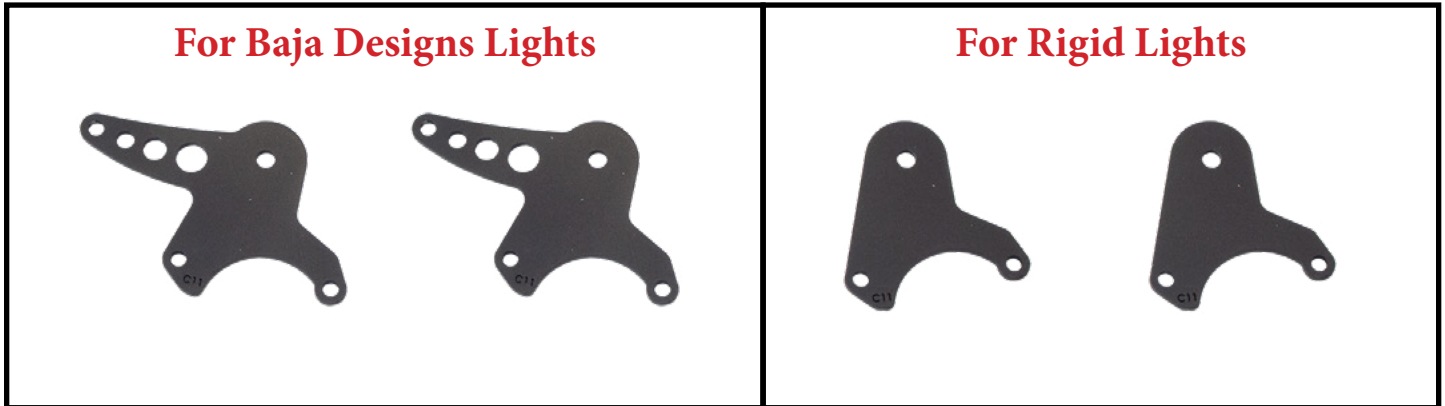


2. Set the Chase Rack Mounting Plates in place so that the bed rail is being sandwiched by the Chase Rack and the Mounting Plates. Install the supplied 1/2" Bolts (3 per side), 1/2" Washers (6 per side), and 1/2" Lock Nuts (3 per side). Once all bolts are loosely installed, torque the 1/2" Bolts to 70 foot pounds. (Fig B)



3. Install any lights you have onto your chase rack now. Round lights will mount directly to the chase rack using the light manufacturer's hardware. If you have a 50" Bar to mount, you will have to use one of the pairs of supplied mounting tabs.

First, choose the correct set of mounting tabs. Then, bolt the tabs to the light using the light manufacturer's hardware. (Fig C)



**Fig C**

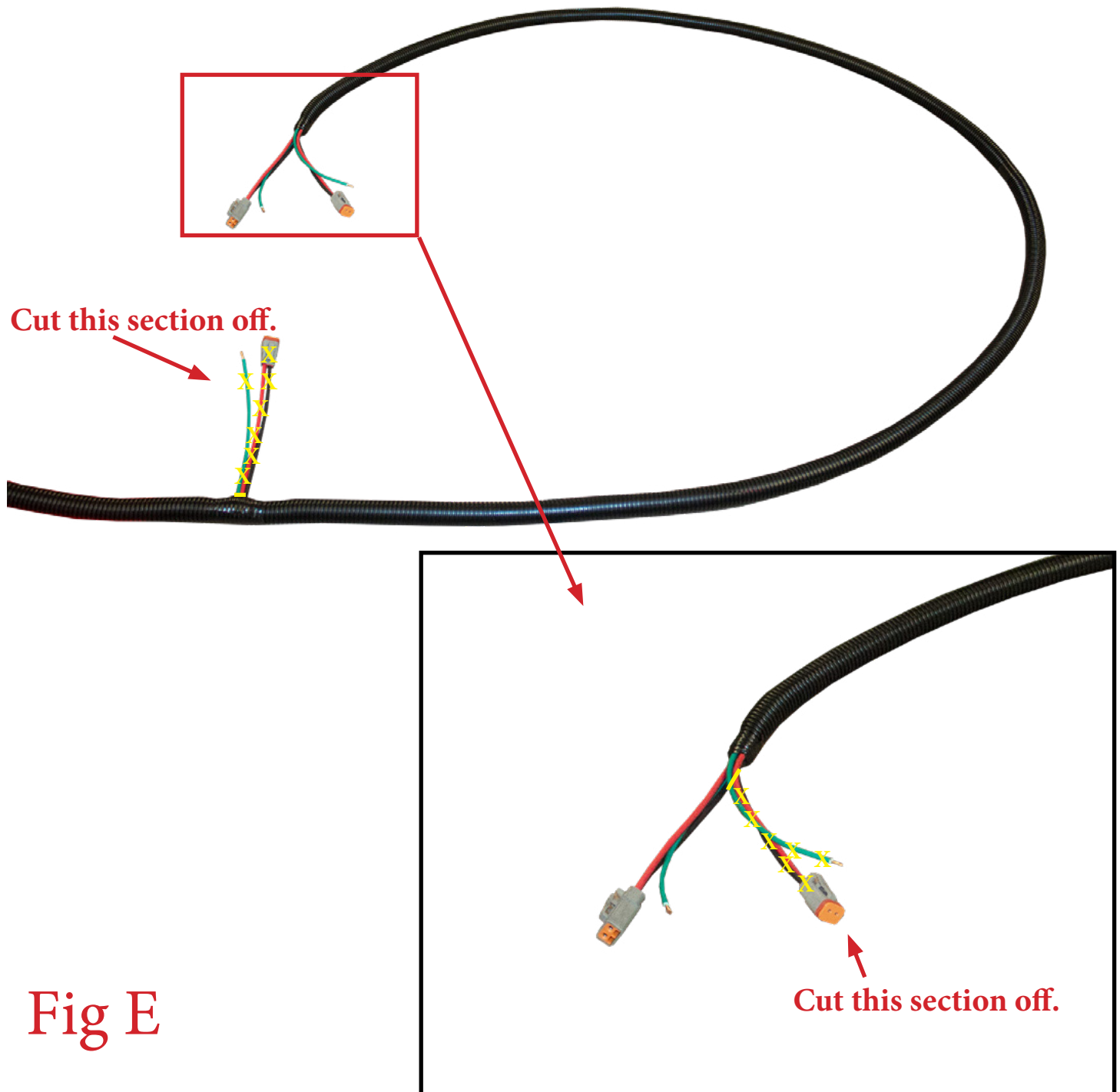
4. Mount the 50" Bar/Bracket Assembly to your chase rack using the supplied 1/4" Bolts (x4), 1/4" Washers (x4), and 1/4" Lock Nuts (x4). (Fig D)





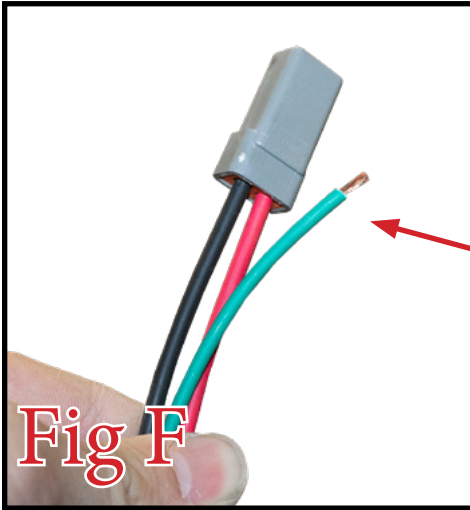
**Wiring:**

5. Pictured below is the main portion of the chase rack harness. Since this harness is designed to fit more than one vehicle, that are parts that won't be used. Simply cut off the parts referenced in (Fig E) and cap the individual wires off with electrical tape so that none of the bare wires can touch.



**Fig E**

6. Set the harness in place on the chase rack so that the main connector (with the larger gauge wires) lands on the same side as the wiring (usually the driver side) for your light bar/round lights (you will have to tie all of your round lights together). If your light bar does not have a connector on it, you can cut the connector off of our harness and connect the harness to your light bar using the butt connectors or connector kit that comes with your light bar. (Fig F)



**Connect the Red Wire to the Power Wire from your Light**  
**Connect the Black Wire to the Ground Wire from your Light**  
**Connect the Green Wire to the Backglow Wire from your Light (if applicable)**

7. Run the harness along the chase rack to the passenger side. Line the black and red bare wires up with the black and red wires from the chase rack actuator. Use the butt connectors supplied with our harness to make this connection. (Fig G)



8. Run the harness down the frame rail towards the front of the truck on the passenger side. (Fig H)



9. Send the two red wires with blue butt connectors (one for the lights one is unused), the green wire (for the light's backglow), and black wire with an eyelet (for ground) forward into the engine bay on the passenger side.

10. Connect the black wire with the eyelet on the end of it to the negative terminal of the battery.

11. If your truck does not have upfitter switches, use the light bar manufacturer's harness as you normally would, but use the larger gauge red wire as the power wire for your lights and use the green wire as the power wire for the backglow (if applicable). The smaller gauge red wire is unused and can be capped off.

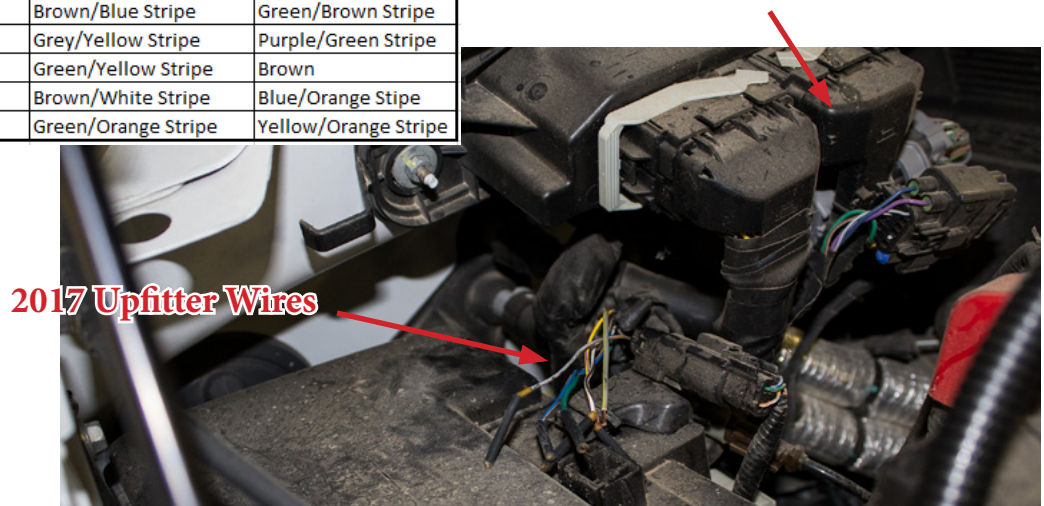
Then, skip to Step 14

If your truck has upfitter switches, follow Steps 12 & 13

12. Find the upfitter switch wires in your truck. These wires are located under the hood, along the back/passenger side. The color and location of the upfitter switch wires varies depending on the model year of your truck. Refer to (Fig I) for location and colors.

Switch	Amp Draw	2017 Colors	2018-2019 Colors	2020 Colors
1	15	Green/Blue Stripe	Green/White Stripe	Yellow
2	15	Grey/Yellow Stripe	Brown/Blue Stripe	Green/Brown Stripe
3	10	Purple/Orange Stripe	Grey/Yellow Stripe	Purple/Green Stripe
4	10	Brown/Blue Stripe	Green/Yellow Stripe	Brown
5	5	Grey/Orange Stripe	Brown/White Stripe	Blue/Orange Stripe
6	5	Yellow/Purple Stripe	Green/Orange Stripe	Yellow/Orange Stripe

**2018-Up Upfitter Wires are taped to this harness**

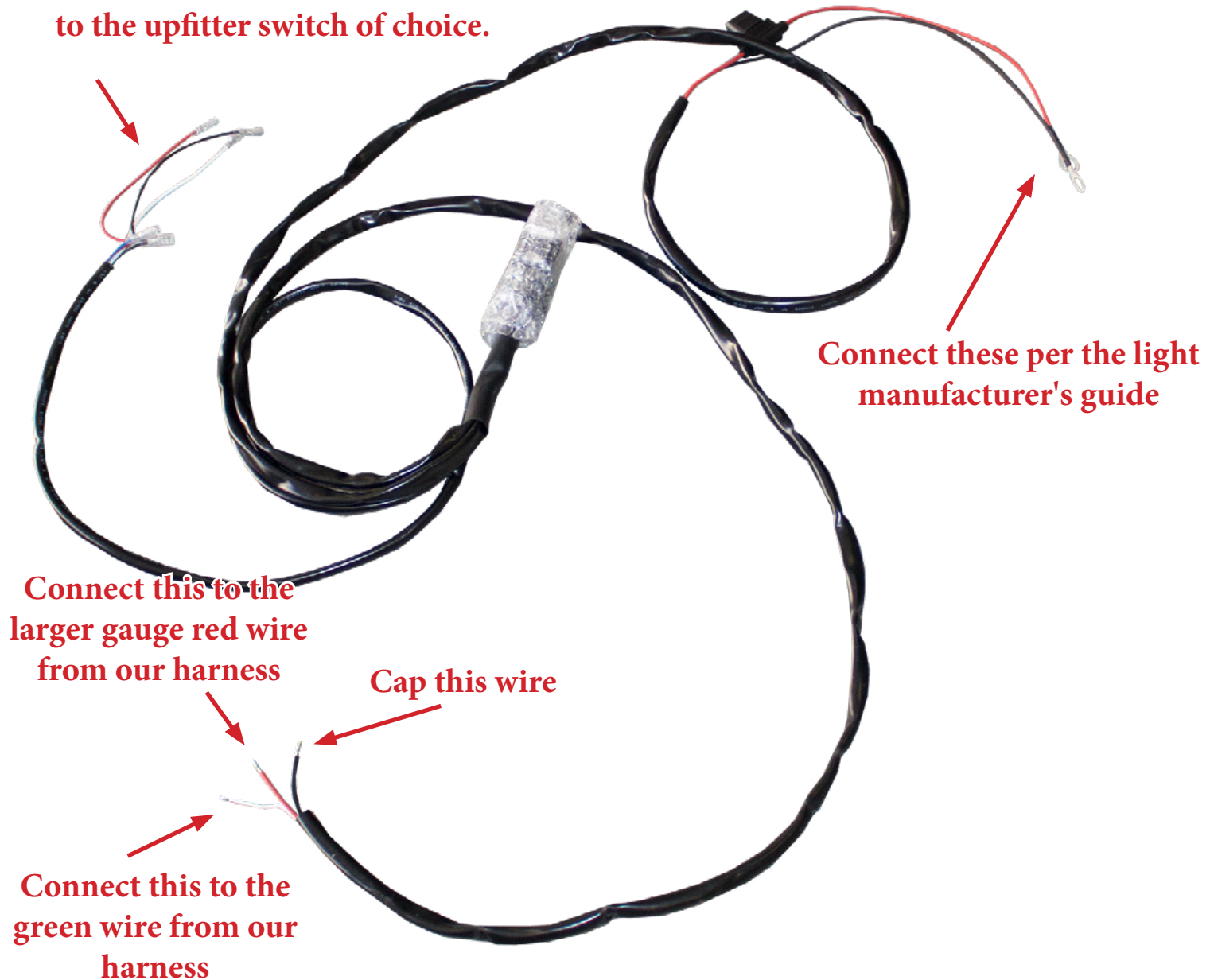


**Fig I**



13. Check the amperage draw of your light against the amperage rating of the upfitter switch you plan to connect it to. The amperage draw of the light must be considerably less than the upfitter switch rating. Most likely, you will have to connect the larger gauge red wire to a relay harness (normally provided by the light manufacturer) before connecting it to the upfitter switch wire. The illustration below shows an example of how to use a light harness in conjunction with your upfitter switches. (Fig J)

**Connect the blue wire in this bunch to the upfitter switch of choice.**



**Fig J**



14. Open the driver side door and remove the two kick panels. There are no tools required for this step, they simply pull off by hand. Pull the carpet up and find the rubber body plug. Take this body plug out, cut a slit in it, then reinstall it. (Fig K)



**Fig K**

15. The remaining two wires in the chase rack harness (red and black) will cross through the transmission cross member towards the driver's side of the truck. Then follow up the frame rail to the rubber body plug. Pass these wires through the slit you just cut in that rubber body plug. (Fig L)



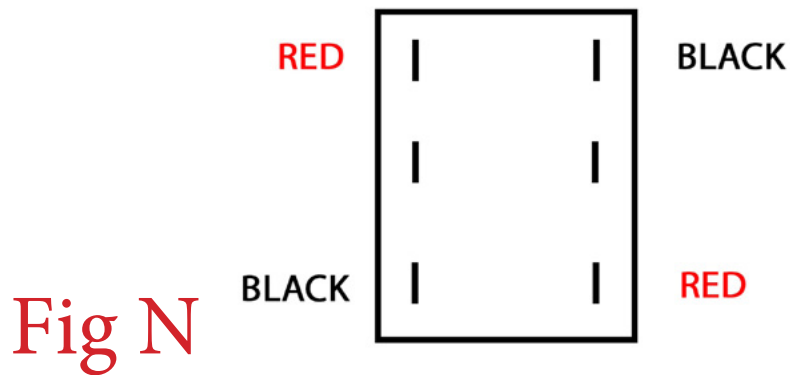
**Fig L**

16. Install the supplied switch in desired location. Use a 7/16" Drill Bit to drill your hole, then install the switch in your newly drilled hole. (Fig M)



**Fig M**

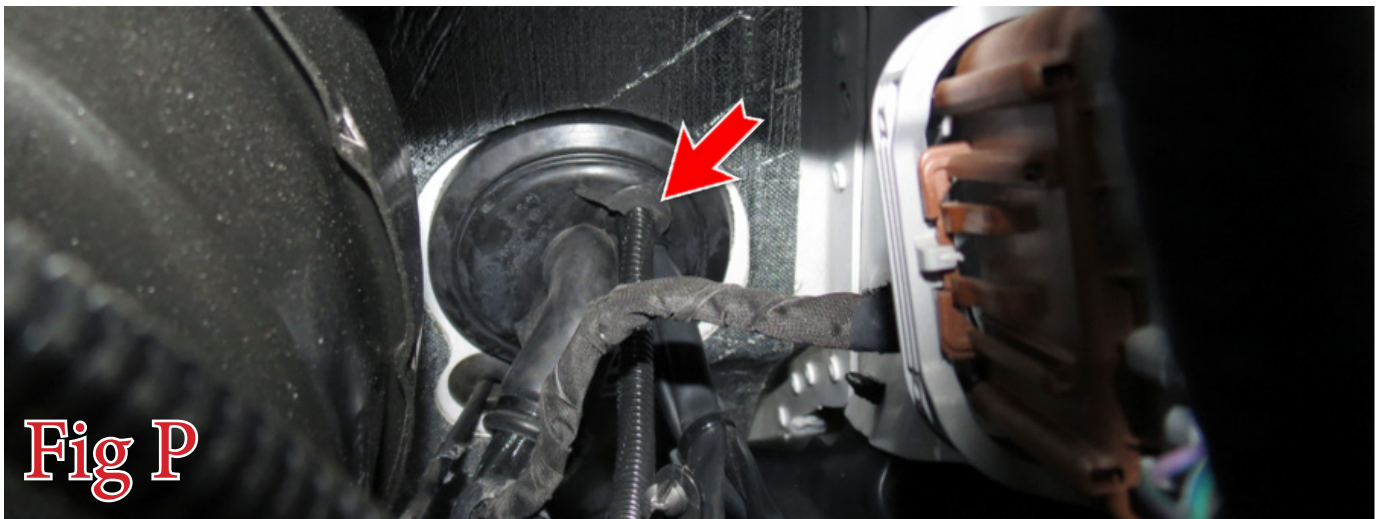
17. On the back side of the switch, connect both red connections (from your chase rack harness) to opposite corners. Then, connect both black connections to the remaining opposite corners. Leave the middle posts unused for now. (Fig N)



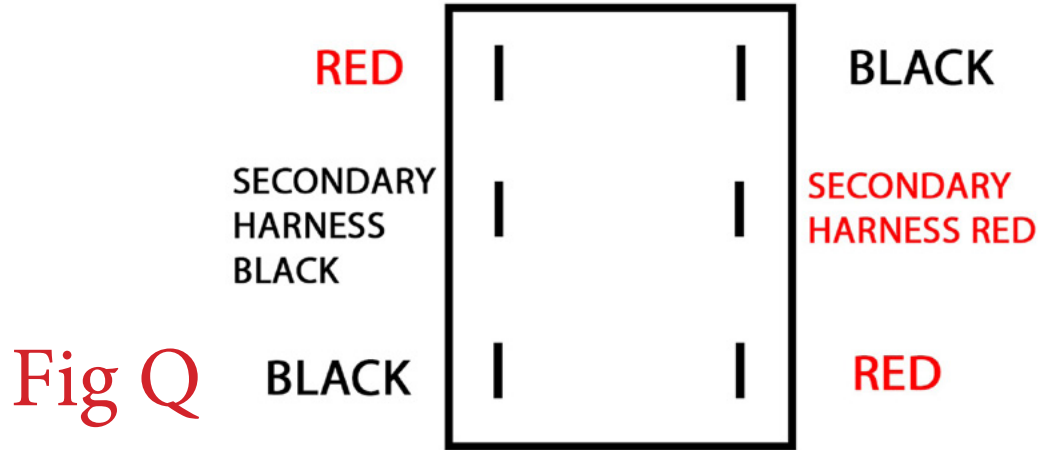
18. Find the secondary harness. Connect the red eyelet to the positive terminal of the battery. (Fig O)



19. Route the harness around the back of the firewall to reach the driver side of the engine compartment. Then, pass it through the firewall at the rubber grommet shown in (Fig P)



20. Bring the wires to the back of the switch. Then, connect the red wire to either of the middle posts on the switch. Connect the black wire to opposing middle post. (Fig Q)



21. Mount the eyelet from the secondary harness to a nearby ground bolt.

22. Test the actuator's up and down function. You may have to flip the switch 180 degrees if the up/down functions are backwards.

**\*\*\*\*\*Only hold the switch until the actuator stops or the light bar is at desired angle. Extended power at max positions may burn out the actuator motor\*\*\*\*\***

23. Reinstall the driver side kick panels.

24. Stand back and enjoy your new ADD PRO™ Chase Rack.

25. Check and re-tighten, if needed, all mounting bolts after 100 miles and periodically thereafter.



