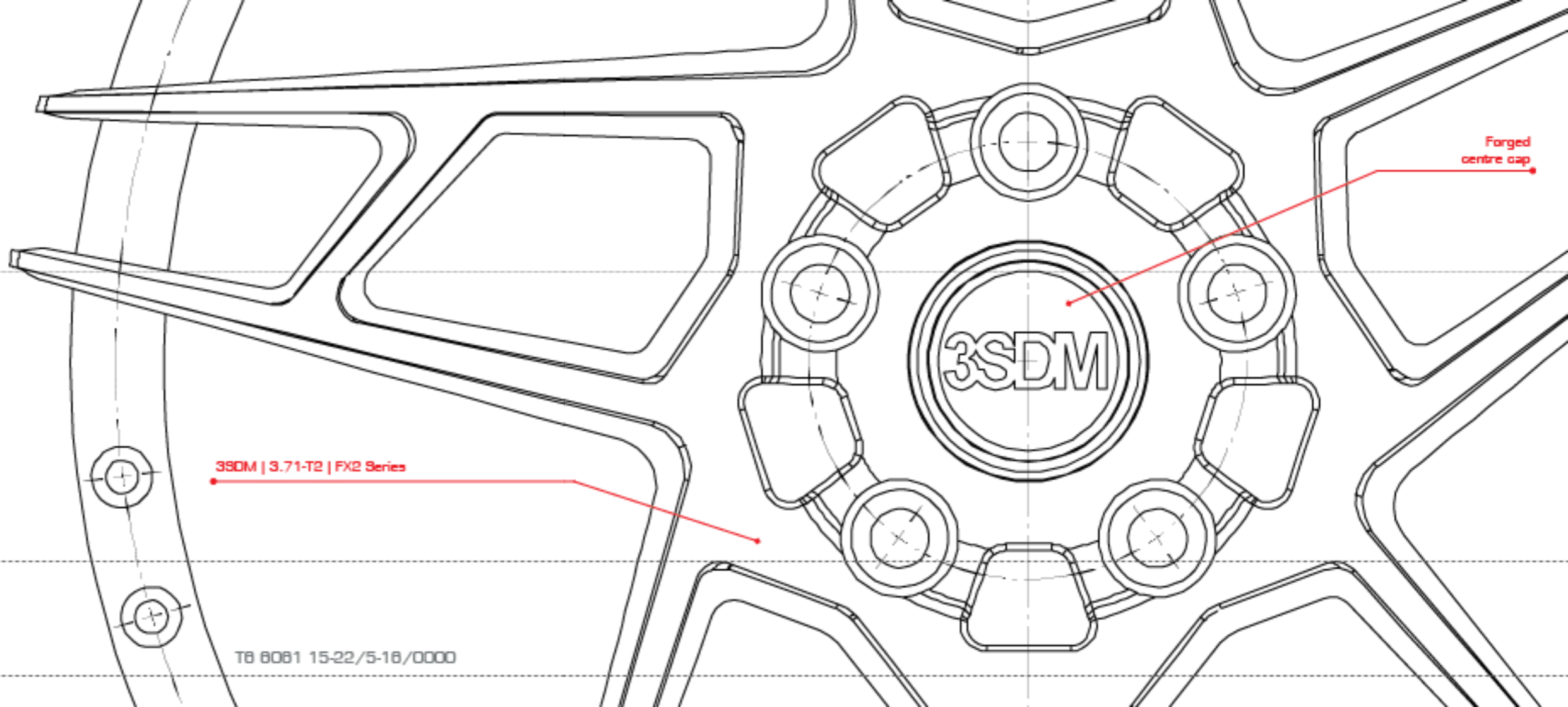


# 3SDM

www.3sdm.com

# 3SDM



3SDM | 3.71-T2 | FX2 Series

Forged  
centre cap



3SDM Custom Forged Wheels  
Designed and Manufactured in Great Britain

T8 8081 15-22/5-18/0000



**BMW M3**

Wheels - 3SDM 0.01

Fitment - 20x8.5 / 20x10.0

Finish - Silver/cut

Construction - Low pressure cast



18x8.5	5X100	ET 35
	5X112	ET 45
	5X120	ET 35
18x9.5	5X100	ET 35
	5X112	ET 40
	5X120	ET 40
19x8.5	5X112	ET 32 / 42
	5X120	ET 38
19x9.5	5X112	ET 35 / 40
	5X120	ET 33
20x8.5	5X112	ET 35
	5X120	ET 18 / 35
20x10.0	5X112	ET 35
	5X120	ET 25 / 35



Silver/cut



Matte Black

**All the spokes**

Introducing the 0.01, our very first wheel to put 3SDM firmly on the map.

Designing such a wheel isn't easy as what you may think.

Everything needs to be questioned and thrown into the mix.

Depth of the concave? Width between spokes? Shape of the individual spokes? Just millimeters of difference can make or break a wheel. Creating a design that will compliment a range of cars is quite the task, but we think the 0.01 really works.

**BMW 6 Series**

Wheels - 3SDM 0.04

Fitment - 20x9.0 / 20x10.5

Finish - Silver/cut

Detail - CNC milled logo

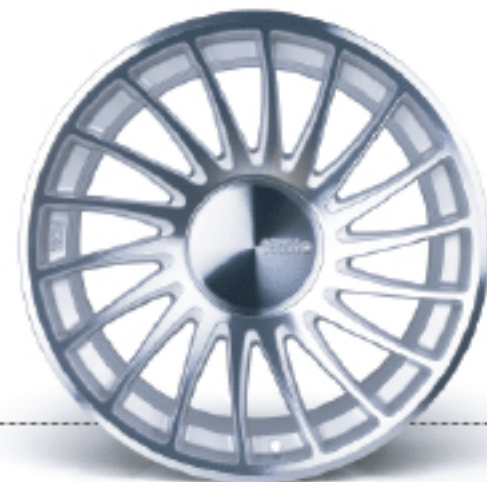
Forged cap

Construction - Low pressure cast





18x8.5	5X100	ET 35
	5X112	ET 42
	5X120	ET 35
18x9.5	5X100	ET 35
	5X112	ET 40
	5X120	ET 40
18x8.5	5X112	ET 35 / 42
	5X120	ET 35
18x10.0	5X112	ET 35
	5X120	ET 40
20x8.0	5X112	ET 25 / 35
	5X120	ET 18 / 38
20x10.5	5X112	ET 27 / 35
	5X120	ET 27 / 42



Silver/out

**Direction of the alloy wheel industry**

With the first ever staggered fit mono-block directional wheel, our 3SDM 0.06, there have been a few others jump on the band wagon and try to use our idea. We thought we would give it another go and show them how its done.

The 0.04 comes with 2 centre cap options

1/ The large billet cap is super smooth and features a CNC 3SDM logo giving a clean modern look.

2/ The small cap exposes the lug ware and changes the whole wheel design. Both caps are included with each wheel so you can try out both looks as you please.





**AUDI A4**

Wheels - 3SDM 0.06

Fitment - 19x9.5

Finish - Silver/cut

Construction - Low pressure cast



18x8.0	4X100	ET 25
	5X100	ET 10
16x9.0	4X100	ET 20
	5X100	ET 20
18x8.5	5X100	ET 35
	5X112	ET 42
	5X114	ET 42
	5X120	ET 35
18x9.5	5X100	ET 35
	5X112	ET 40
	5X114	ET 40
	5X120	ET 40
19x8.5	5X112	ET 35 / 42
	5X120	ET 35
19x9.5	5X112	ET 35 / 40
	5X120	ET 40



Silver/Cut



Matte Black



White/Cut



White

#### 80's ICON

We honestly don't think anyone could not like the Ferrari F40, it rooked that awesome 5 spoke, star style, multi-piece wheel and it looked awesome. We decided to bring it back with some tasty concave depth and a contemporary flavour whilst still retaining those retro straight lines.





AUDI A4

Wheels - 3SDM 0.06

Fitment - 19x10.0

Finish - Silver/cut

Detail - CNC milled logo

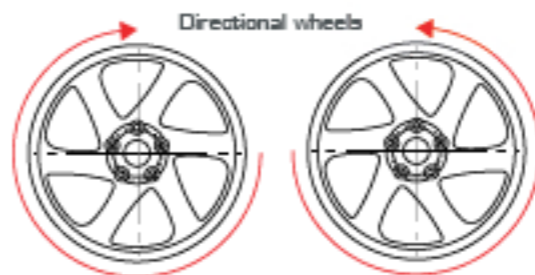
Construction - Low pressure cast



18x8.5	5X100	ET 35
	5X112	ET 42
	5X120	ET 35
18x9.5	5X100	ET 35
	5X112	ET 40
	5X120	ET 40
18x8.5	5X112	ET 35 / 42
	5X120	ET 35
18x10.0	5X112	ET 35
	5X120	ET 40



Silver/out



Directional wheels

#### Heading forward

We knew we were making life hard for ourselves when we decided to make a staggered monoblock directional wheel. We just didn't think it would be this hard.

Up till the 0.08 was released, all other staggered directional wheels were of 3 piece construction with a huge price tag. All 4 wheels are different so you can achieve different looks with one set of wheels, you can run the wheels facing forwards or backwards or even the front wheels facing forwards and the back facing backwards.

We were the only people crazy enough to do it.

**AUDI A5**

Wheels - 3SDM 0.08

Fitment - 20x9.0 / 20x10.5

Finish - Silver/cut

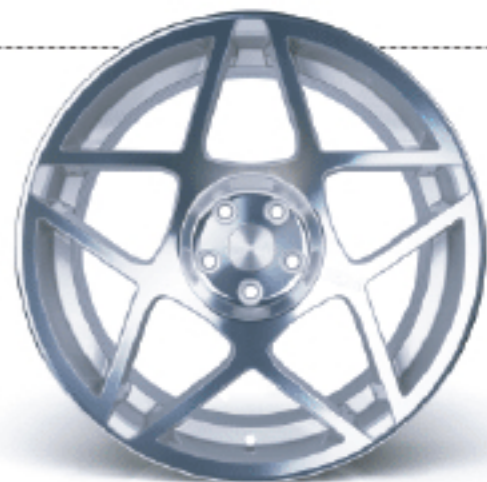
Detail - CNC milled logo

Construction - Low pressure cast





20x9.0	5X112	ET 25 / 35
	5X114	ET 38
	5X120	ET 18 / 38
20x10.5 Concave	5X112	ET 35
	5X114	ET 42
	5X120	ET 42
20x10.5 Deep Concave	5X112	ET 27
	5X120	ET 27



Silver/out



20x10.5  
Deep concave

20x10.5  
concave

20x9.0  
concave

#### LOOKING FOR HUGE?

"It's a 0.05 with the spoke out out" is what we've been hearing since we launched this wheel. To be honest, that's where the idea came from but pretty much every angle and line has been reworked since then to produce a much more modern looking wheel. We have also stepped up the sizes with 20x9.0 and 20x10.5 so they're perfect for filling up those larger arches.



**Mk6 / MX**

Wheels - 3SDM 0.09

Fitment - 18x9.5

Finish - gold/cut

Detail - CNC milled logo

Forged cap

Construction - Low pressure cast



18x8.5	5X100	ET 35
	5X112	ET 42
	5X120	ET 35
18x9.5	5X100	ET 35
	5X112	ET 40
	5X120	ET 40
19x8.5	5X112	ET 35 / 42
	5X120	ET 35
19x10.0	5X112	ET 35
	5X120	ET 40



Matt silver/brushed



Gold/cut



Matt black/brushed

**Modern vintage or vintage modern**

The 0.08's styling influences are clear but the execution is pure 3SDM. From the two step rim design, giving maximum spoke length and an inherent elegance, to the recessed centre bowl featuring a forged aluminium cap with machined logo, the ultrafinely machined 'mirror or brushed' polished lip and 3SDM logo machined into the face of the wheel.



**Mk7 WAGON**

Wheels - 3SDM 0.66

Fitment - 18x8.5 / 18x9.5

Finish - Silver/cut

Detail - CNC milled logo

Forged cap

Construction - Low pressure cast



17x8.0	TBC	TBC
18x8.5	5X100	ET 35
	5X108	ET 42
	5X112	ET 42
	5X114	ET 42
	5X120	ET 35
18x9.5	5X100	ET 35
	5X112	ET 40
	5X120	ET 40
20x8.5	TBC	TBC
20x10.0	TBC	TBC



Silver /out

**350M Motorsport**

Our take on a motorsport wheel, as usual the obvious route was the wrong route.

Why make things easy when you can make things bloody difficult for yourself?

Taking a look at rally and short circuit designs over the ages it was clear that function was taking the lead over form. Strong and robust yes, but pleasing to the aesthetic part of your brain wasn't part of previous design remits.

"It needs to be strong and bold" was clear but we know you want more so excruciating attention to detail was paid to every radius, every curve and every straight axis giving a harmonious look with details jumping of every different angle it's viewed from. CNC machined detail on a mirror polished face.



### 3SDM | Forged | 3.01

**Fitments** - We can make all our forged wheels in Custom widths sizes and fitments

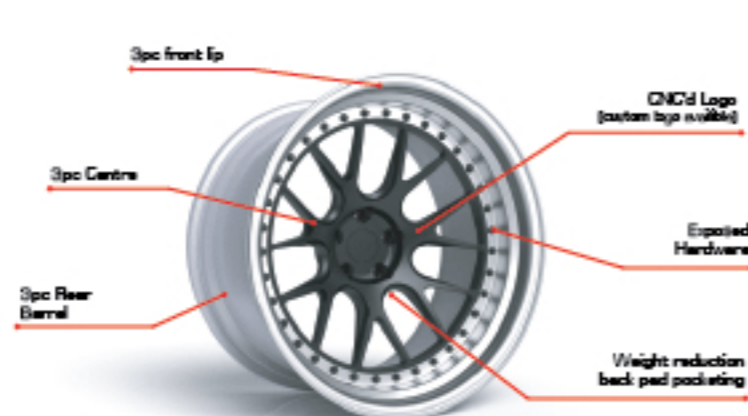
**Finish** - all our forged wheels are custom finished

**Centres** - Forged 6061 T6 blanks Custom Milled

**Rims** - Spun 6061 T6

Every 3SDM forged wheel is UK made from concept to realization, in our own 100% owned manufacturing facility. This allows our own highly trained engineers to have complete control over all aspects of the manufacturing process and gives us extremely quick reaction times to market demands. For every new application and specification a new set of drawings are prepared, there is no generic brake clearances, no generic offsets. We make our forged wheels for your specific vehicle, and to your requirements whether that's to maximize concave, dish, or both. We have most OEM brake caliper profiles on file as well so there's normally no need for you to give us any complicated brake measurements.

### 3.01 FR SERIES



#### FR - Series

Centre mounted  
Exposed hardware  
Weight reduction features  
Flat / Concave / Deep concave  
Bespoke options available  
Detail - CNC milled logo  
Forged cap or drilled to take OEM

### 3.01 FX2 SERIES



#### FX2 - Series

Face mounted  
Extended spoke  
Exposed hardware  
Hidden hardware  
Weight reduction features  
Flat / Concave / Deep concave  
CNC milled logo  
Forged cap or drilled to take OEM

### 3.01 FX3 SERIES



#### FX3 - Series

Face mounted  
Exposed hardware  
Hidden hardware  
Weight reduction features  
Flat / Concave / Deep concave  
CNC milled logo  
Forged cap or drilled to take OEM



**3.41**  
FR Series



**3.48**  
FR Series



**3.82**  
FR Series



**3.88**  
FR Series



**3.01**  
FR Series



**3.04**  
FR Series



**3.05**  
FR Series



**3.08**  
FR Series



**3.88 - T**  
FR Series



**3.71**  
FR Series



**3.71 - T2**  
FR Series



**3.72**  
FR Series



**3.08**  
FR Series



**3.09**  
FR Series



**3.19**  
FR Series



**3.33**  
FR Series

**LB AUDI R8**

Wheels - 3SDM 3.01

Fitment - 20x9.0 / 20x12.0

Finish centre - Matt black

Finish lip - Gloss black

Detail - CNC milled logo

Cap - Forged

Construction - 3pc FR Series



380M Custom Forged Wheels  
Designed and Manufactured in Great Britain



**LB Ferrari 458**

Wheels - 3SDM 3.66

Fitment - 20x9.0 / 20x12.0

Finish centre - Matt black

Finish lip - Gloss black

Detail - CNC milled logo

Cap - Forged

Construction - 3pc FR Series





**3.01**  
FX2 Series



**3.04**  
FX2 Series



**3.05**  
FX2 Series



**3.08**  
FX2 Series



**3.41**  
FX2 Series



**3.48**  
FX2 Series



**3.82**  
FX2 Series



**3.88**  
FX2 Series



**3.08**  
FX2 Series



**3.09**  
FX2 Series



**3.19**  
FX2 Series



**3.33**  
FX2 Series



**3.88 - T**  
FX2 Series



**3.71**  
FX2 Series



**3.71 - T2**  
FX2 Series



**3.72**  
FX2 Series



**Mercedes C class**

Wheels - 35DM 3 38

Fitment - 18x9.0 / 18x10.0

Finish centre - Copper gold

Finish lip - Polished with tinted gold lacquer

Detail - CNC milled logo

Cap - Forged

Construction - 5pc FX2 Series



3SDM Custom Forged Wheels  
Designed and Manufactured in Great Britain







**3.01**  
FX3 Series



**3.04**  
FX3 Series



**3.05**  
FX3 Series



**3.08**  
FX3 Series



**3.41**  
FX3 Series



**3.48**  
FX3 Series



**3.82**  
FX3 Series



**3.88**  
FX3 Series



**3.08**  
FX3 Series



**3.09**  
FX3 Series



**3.19**  
FX3 Series



**3.33**  
FX3 Series



**3.88 - T**  
FX3 Series



**3.71**  
FX3 Series



**3.71 - T2**  
FX3 Series



**3.72**  
FX3 Series

**Audi S3**

Wheels - 3SDM 3.44

Fitment - 19x9.0 / 19.10.0

Finish centre - Black polished

Finish lip - polished

Detail - CNC milled logo

Cap - Forged

Construction - 3pc FX3 Series





**Subaru Impreza**

Wheels - 3SDM 3.60

Fitment - 18x9.5

Finish centre - Copper

Finish lip - Polished

Cap - Forged

Construction - 3pc FX3 Series



**Porsche 964**

Wheels - 35DM 3.64

Fitment 18x8.5 / 18x10.0

Finish centre - Matt gold

Finish lip - Polished

Detail - CNC milled logo

Cap - Custom OEM

Construction - 3pc FX3 Series

Check out the collection of custom wheels and rims we offer.